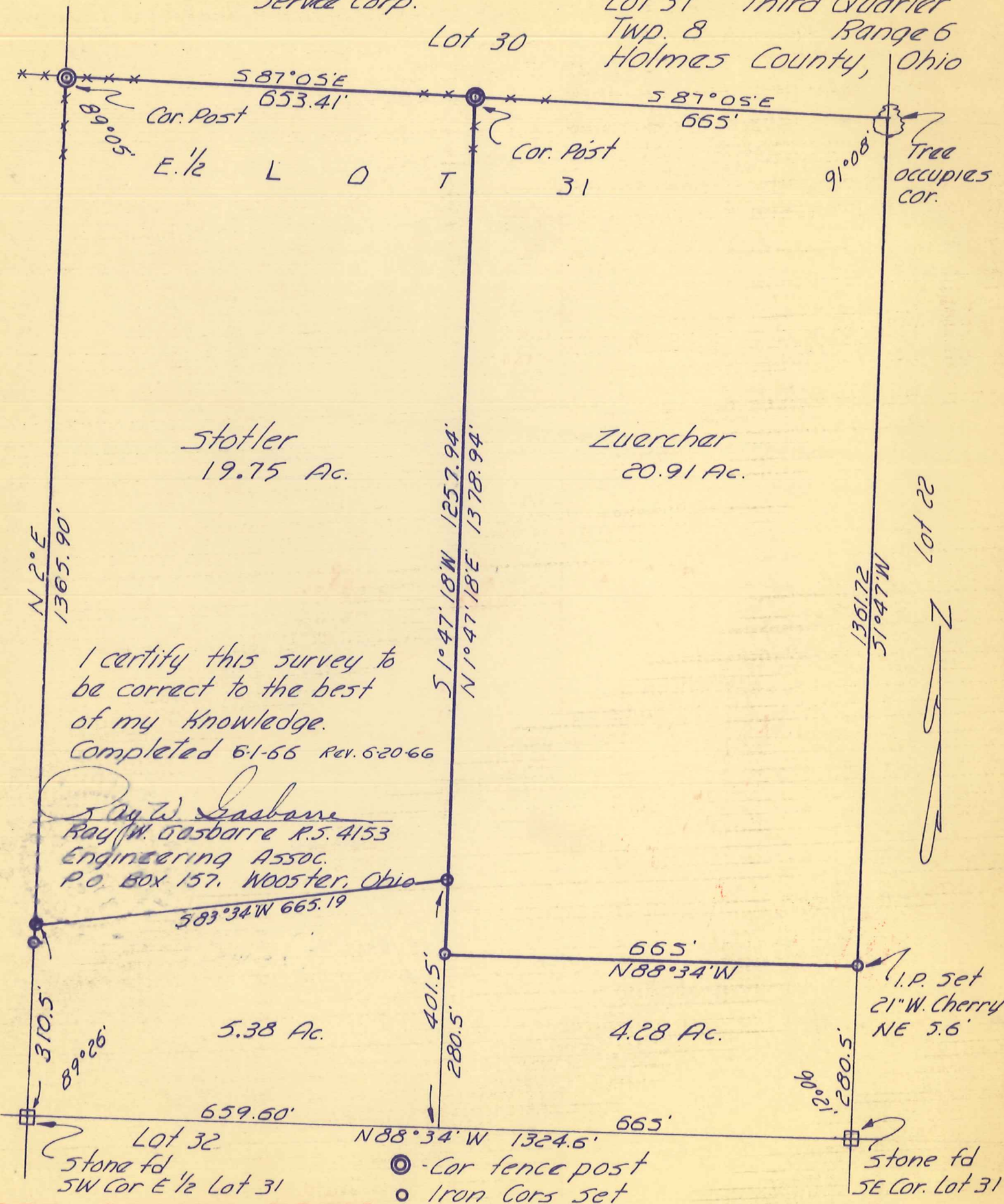


made for The American Realty Service Corp.

Mechanic Township
Lot 31 Third Quarter
Twp. 8 Range 6
Holmes County, Ohio

Lot 30



Stotler
19.75 Ac.

Zuercher
20.91 Ac.

I certify this survey to be correct to the best of my knowledge.
Completed 5-1-66 Rev. 6-20-66

Ray W. Gasbarre
Ray W. Gasbarre R.S. 4153
Engineering Assoc.
P.O. Box 157, Wooster, Ohio

583°34'W 665.19'

5.38 Ac.

665'
N88°34'W

4.28 Ac.

I.P. set
21" W. Cherry
NE 5.6'

659.60'

N88°34'W 1324.6'

665'

Lot 32
stone fd
SW Cor E 1/2 Lot 31

- - Cor fence post
 - Iron Cors set
 - ⊠ stone Cors fd
- Scale 1" = 200

stone fd
SE Cor. Lot 31