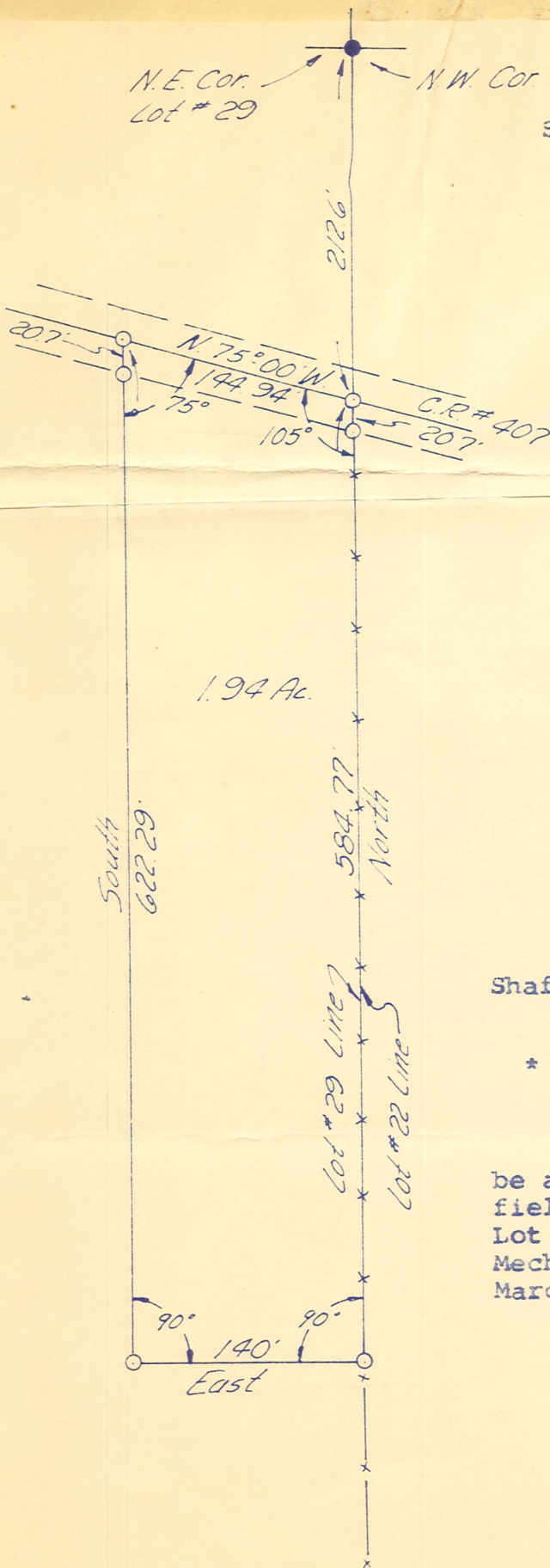


N.E. Cor.  
Lot # 29

N.W. Cor Lot #22

SURVEY FOR PALLET ALL CORP.



Scale 1"=100'

⊙ I.P. Set

● I.P. Fd.

SW-1388

Shaffer, Johnston, Lichtenwalter  
& Assoc.

\* \* \* \* \*

I hereby certify the above to be a correct plat and true return of field notes of a survey of part of Lot 29, Second Quarter, T-7N, R-6W, T-8 R 26 Mechanic Twp., Holmes County made on March 14, 1968.

*Edgar R. Johnston*  
EDGAR R. JOHNSTON R. S. 3828

MAP OFFICE COPY