

**Mechanic Township
2nd Qtr. Lots 27 & 28
T-8 N; R-6 W
Holmes County, Ohio**

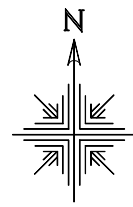
SURVEYED FOR: Dawn Speegle

MASTER PLAT: The Purpose of this survey.

Action 1.) Convey 81.066 Acres.

Action 2.) Convey 57.182 Acres.

- Stone Found
- Pipe Found
- 5/8" Rebar Found
- 5/8" Capped Pin Found "Baker"
- 5/8" Capped Pin Set "Galbraith"
- Point



Scale 1"=200'

REFERENCES:

Deeds as shown

- Plat Vol.16 Page 584
- Plat Vol. 17 Page 816
- Plat Vol. 11 Page 141
- Plat Vol. 19 Page 900
- Plat Vol. 17 Page 506
- Plat Vol. 19 Page 1279
- Plat Vol. 08 Page 171
- Plat Vol. 07 Page 450
- Plat Vol. 16 Page 40
- Plat Vol. 16 Page 53
- Plat Vol. 16 Page 738

Basis of Bearing Grid North, Ohio State Plane Coordinate System, North Zone, NAD 83

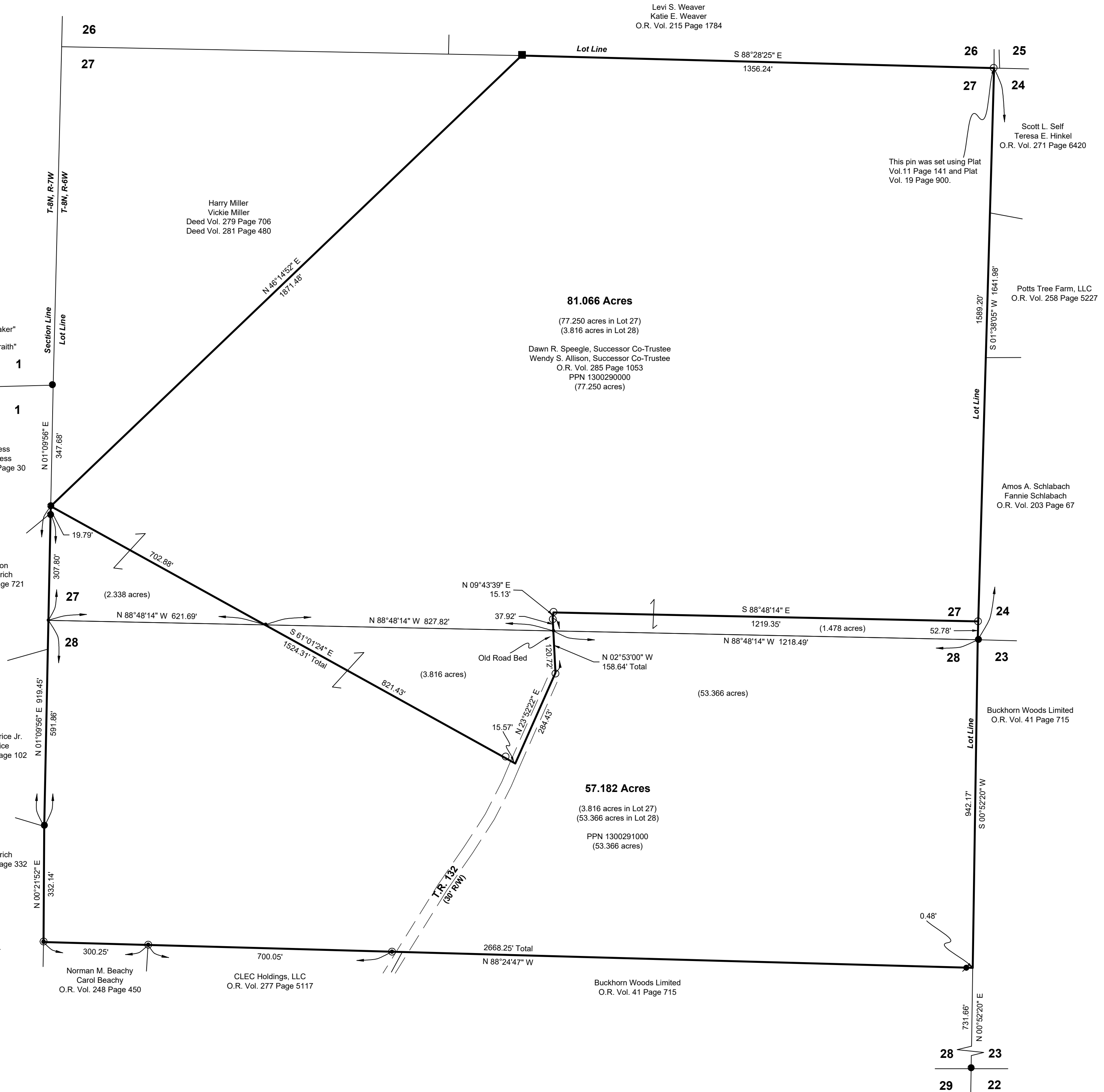


I certify this survey to be correct to the best of my knowledge.

Caleb Galbraith

Caleb Jerome Galbraith P.S. 8703
Date: May 15, 2023
Job ID: 5923-H23

Pioneer Surveying & Services, LLC.
5434 Township Road 377
Millersburg, Ohio 44654
Phone: 330-231-0497
Email: caleb@pioneersurveyingandservices.com



Levi S. Weaver
Katie E. Weaver
O.R. Vol. 215 Page 1784

Harry Miller
Vickie Miller
Deed Vol. 279 Page 706
Deed Vol. 281 Page 480

81.066 Acres

(77.250 acres in Lot 27)
(3.816 acres in Lot 28)

Dawn R. Speegle, Successor Co-Trustee
Wendy S. Allison, Successor Co-Trustee
O.R. Vol. 285 Page 1053
PPN 1300290000
(77.250 acres)

Brian K. Vess
Nellee L. Vess
O.R. Vol. 126 Page 30

Charles B. Ison
Denise A. Deitrich
Deed Vol. 272 Page 721

Lawrence L. Price Jr.
Dana L. Price
O.R. Vol. 230 Page 102

Garnet Deitrich
O.R. Vol. 218 Page 332

Norman M. Beachy
Carol Beachy
O.R. Vol. 248 Page 450

CLEC Holdings, LLC
O.R. Vol. 277 Page 5117

Buckhorn Woods Limited
O.R. Vol. 41 Page 715

Scott L. Self
Teresa E. Hinkel
O.R. Vol. 271 Page 6420

Potts Tree Farm, LLC
O.R. Vol. 258 Page 5227

Amos A. Schlabach
Fannie Schlabach
O.R. Vol. 203 Page 67

Buckhorn Woods Limited
O.R. Vol. 41 Page 715

This pin was set using Plat
Vol. 11 Page 141 and Plat
Vol. 19 Page 900.

0.48'