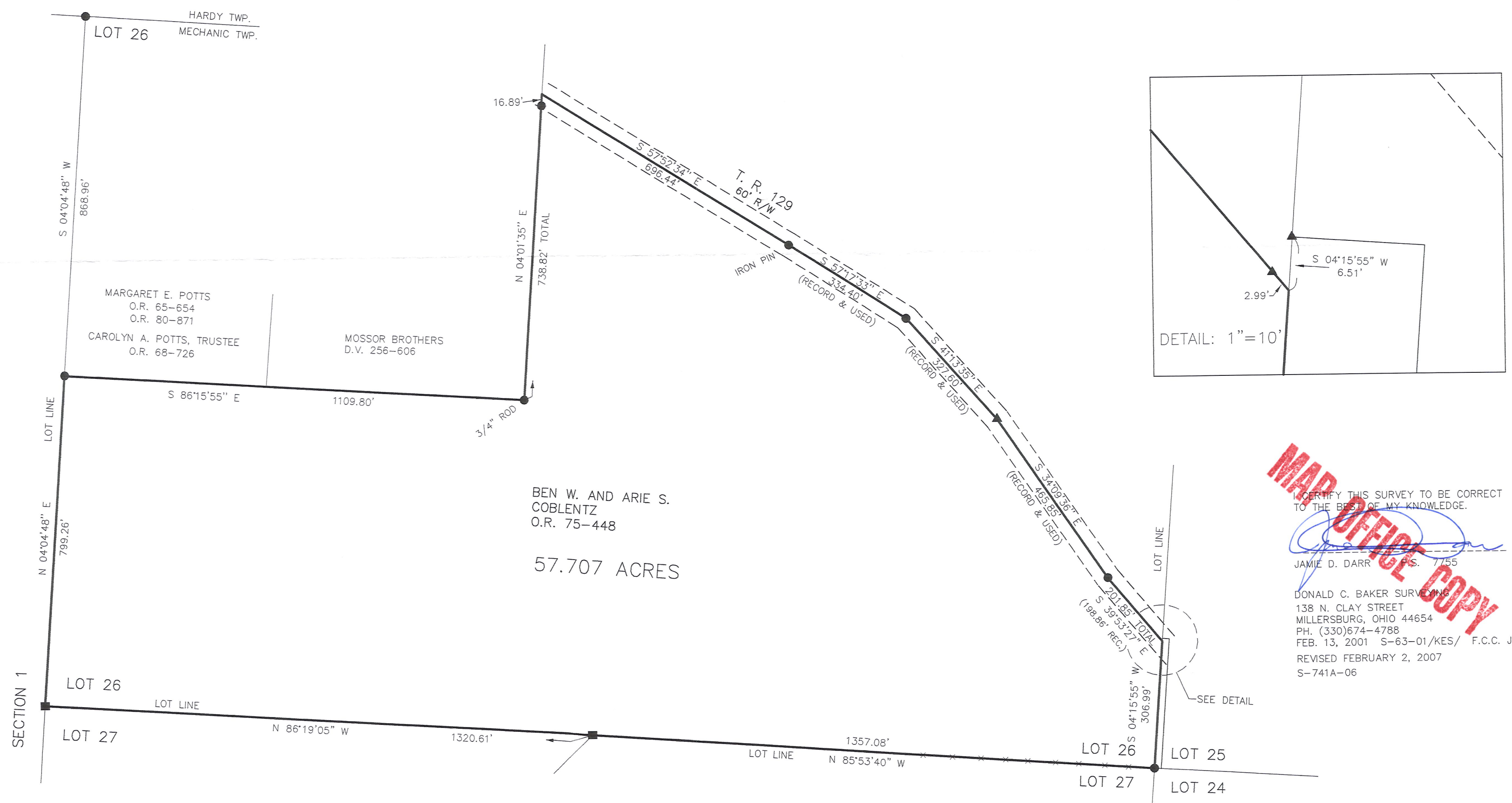
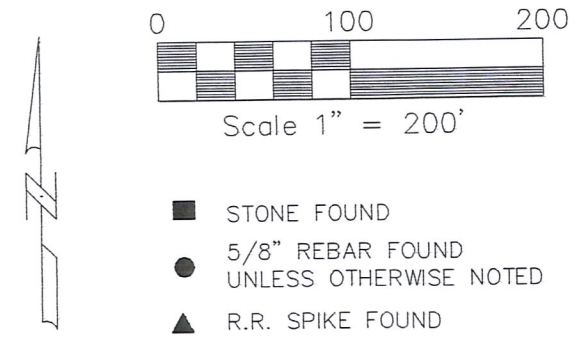


MAR 14 '07 #10:17

MECHANIC TOWNSHIP  
2ND QTR. LOT 26  
T-8N; R-6W  
HOLMES COUNTY, OHIO

REFERENCES:  
DEED VOL. 272 PAGE 774  
DEED VOL. 218 PAGE 139  
DEED VOL. 256 PAGE 606  
  
PLAT VOL. 6 PAGE 69  
PLAT VOL. 10 PAGE 31  
PLAT VOL. 11 PAGE 141  
PLAT VOL. 12 PAGES 29 & 55  
PLAT VOL. 16 PAGE 584  
PLAT VOL. 17 PAGE 756  
PLAT VOL. 19 PAGE 900  
  
BEARINGS FROM PLAT VOL. 16 PAGE 584

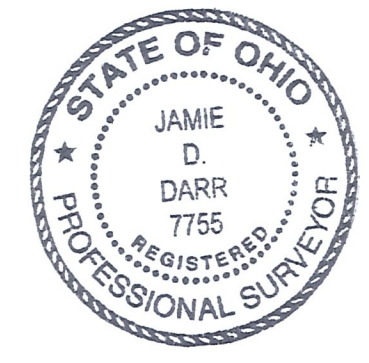


**MAP OFFICE COPY**

I CERTIFY THIS SURVEY TO BE CORRECT TO THE BEST OF MY KNOWLEDGE.

JAMIE D. DARR P.S. 7755

DONALD C. BAKER SURVEYING  
138 N. CLAY STREET  
MILLERSBURG, OHIO 44654  
PH. (330)674-4788  
FEB. 13, 2001 S-63-01/KES/ F.C.C. JDD  
REVISED FEBRUARY 2, 2007  
S-741A-06



THIS PLAT IS TO CORRECT P.V. 17-816.  
THIS LOT CORNER WAS CORRECTED  
IN P.V. 19-900 TO MATCH P.V. 11-141  
AND OLD OCCUPATION FROM THE EAST  
AND WEST.