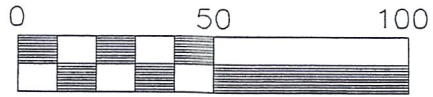


REFERENCES:

O.R. VOL. 118 PAGE 467  
O.R. VOL. 118 PAGE 465  
PLAT VOL. 18 PAGE 338

BEARINGS FROM PLAT VOL. 18 PAGE 337

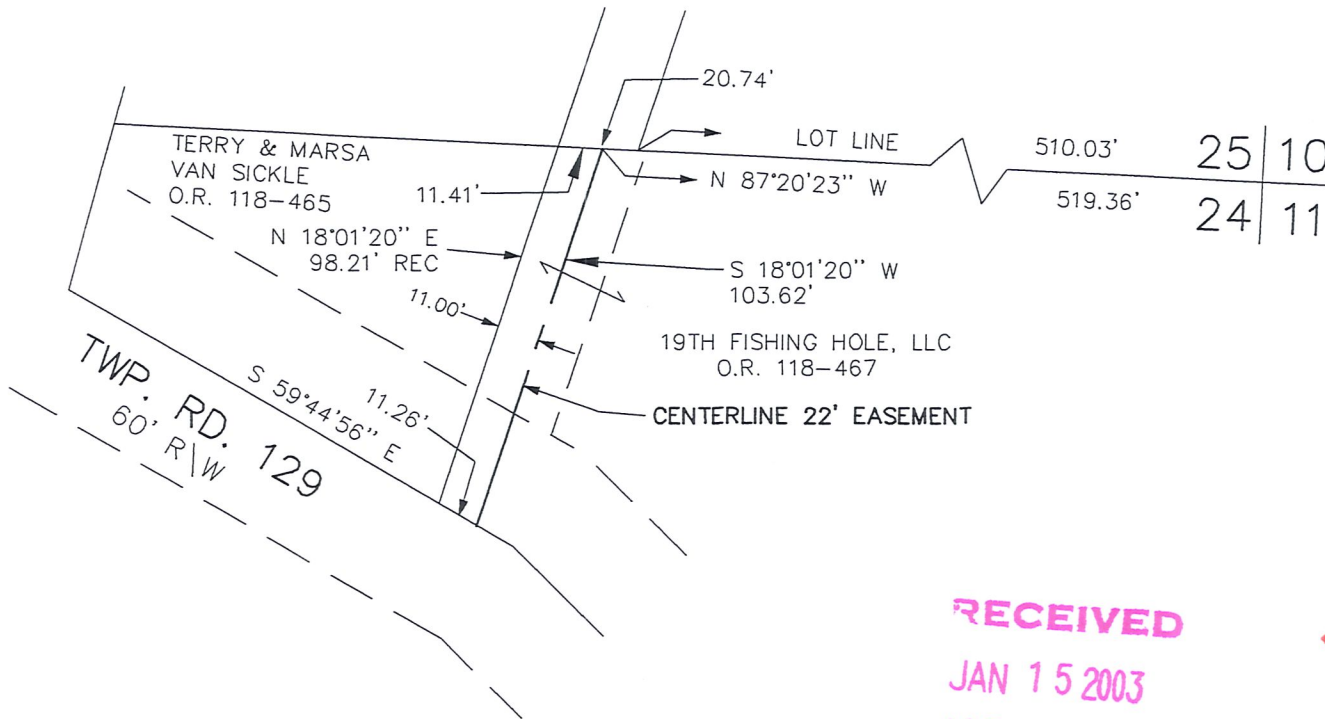


Scale 1" = 50'



# EASEMENT SURVEY

MECHANIC TOWNSHIP  
2ND. QTR. LOT 24  
T-8 N; R-6 W  
HOLMES COUNTY, OHIO



I CERTIFY THIS SURVEY TO BE CORRECT TO THE BEST OF MY KNOWLEDGE.

*Donald C. Baker*

DONALD C. BAKER P.S. 6938

DATE: JAN. 13, 2003

C. JOBST S-32-03

RECEIVED  
JAN 15 2003  
Hol. Co. Tax Map Office

**MAP OFFICE**  
DONALD C. BAKER SURVEYING  
138 N. CLAY ST.  
MILLERSBURG, OHIO 44654  
PH. 330-674-4788  
FAX 330-674-6027