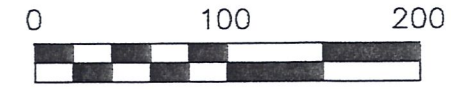


# SURVEY OF A 30' EASEMENT

MECHANIC TOWNSHIP  
2ND. QTR. LOT 17  
T-8 N; R-6 W  
HOLMES COUNTY, OHIO

SURVEYED FOR TYLER MAYS

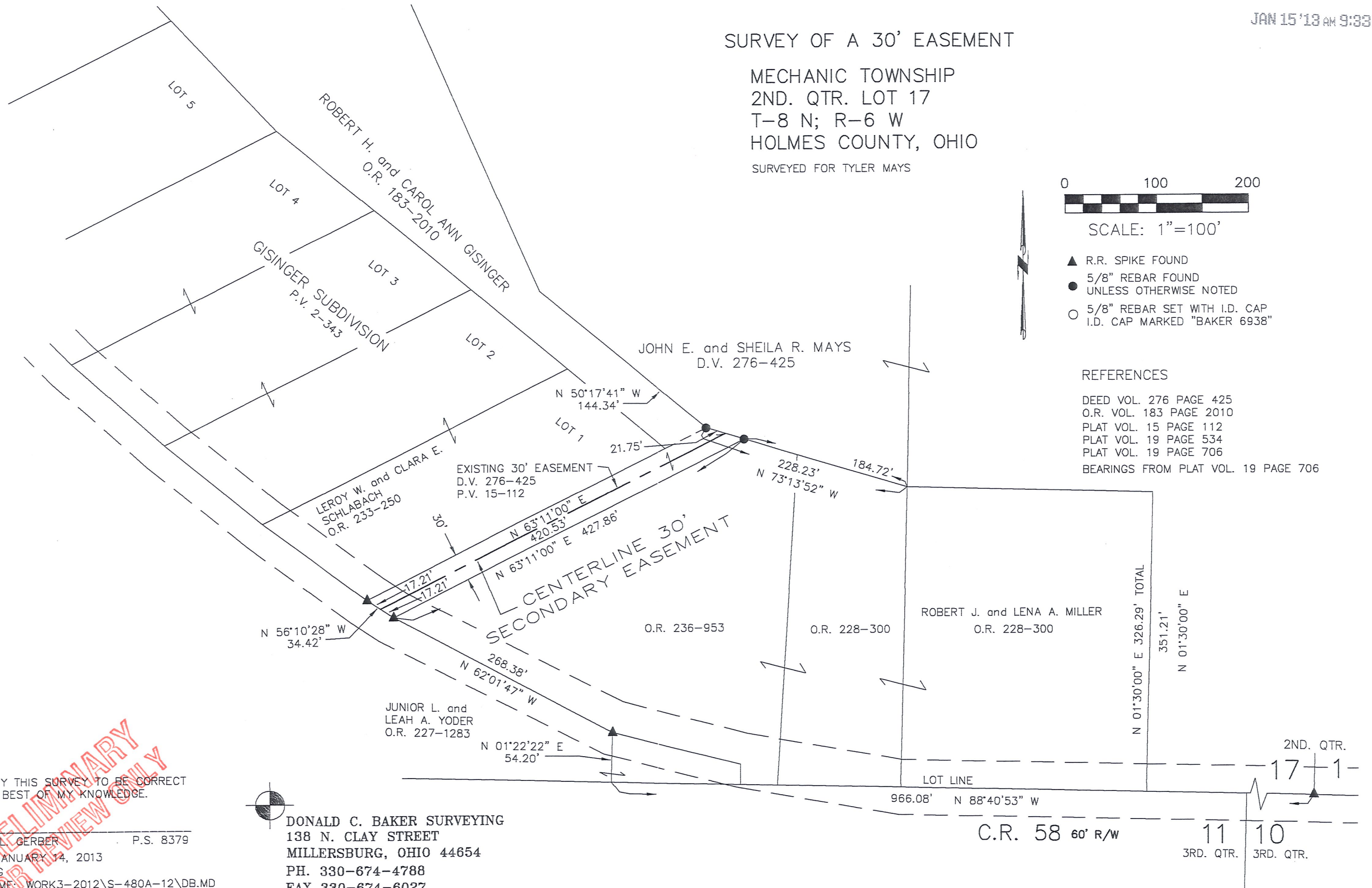


SCALE: 1"=100'

- ▲ R.R. SPIKE FOUND
- 5/8" REBAR FOUND UNLESS OTHERWISE NOTED
- 5/8" REBAR SET WITH I.D. CAP I.D. CAP MARKED "BAKER 6938"

### REFERENCES

- DEED VOL. 276 PAGE 425
- O.R. VOL. 183 PAGE 2010
- PLAT VOL. 15 PAGE 112
- PLAT VOL. 19 PAGE 534
- PLAT VOL. 19 PAGE 706
- BEARINGS FROM PLAT VOL. 19 PAGE 706



I CERTIFY THIS SURVEY TO BE CORRECT TO THE BEST OF MY KNOWLEDGE.

AARON L. GERBER P.S. 8379  
DATE: JANUARY 14, 2013  
ALG\CJG  
FILE NAME: WORK3-2012\S-480A-12\DB.MD

DONALD C. BAKER SURVEYING  
138 N. CLAY STREET  
MILLERSBURG, OHIO 44654  
PH. 330-674-4788  
FAX 330-674-6027

