

Z-442

MECHANIC TOWNSHIP
HOLMES COUNTY, OHIO
LOTS 10 & 11, 2ND QUARTER, T-8N, R-6W

Stone Found, South Edge Of
Creek With 3 Round Marks
On Top. S 3°49'05"W, 3.05'
From Corner

Scale In Feet 1" = 200'

- Stone Found
- Iron Pin Found
- Iron Pin Set - 5/8" Rebar With Yellow Cap Marked "LONG SURVEYING INC." (Iron Pins In Road Have No Caps)

Bearings From Plat Vol. 13, Pg. 13

Terry & Marsha VanSickle
Vol. 233, Pg. 742

References:
Plat Vol. 13, Pg. 13
Plat Vol. 11, Pg. 126
Deeds Shown

See Plat Vol. 13, Pg. 13 For
Access Details

Richard C. Brunn
Vol. 211, Pg. 66

Richard A. & Ronald H. Potts
Vol. 233, Pg. 921

James W. Ball
Vol. 210, Pg. 304



I.P. Pd. 11.15" West
Of Lot Line

I Certify This Survey To Be Correct
To The Best Of My Knowledge.

Donald G. Long Jan 4, 1989
Donald G. Long RS# 7115
LONG SURVEYING INC.
13301 T.R. 503
Big Prairie, Ohio 44611

Lester A. & Fannie L. Erb
Deed Vol. 130, Pg. 218
58.59 Ac. (DEED)
65.713 Ac. (Calculated)

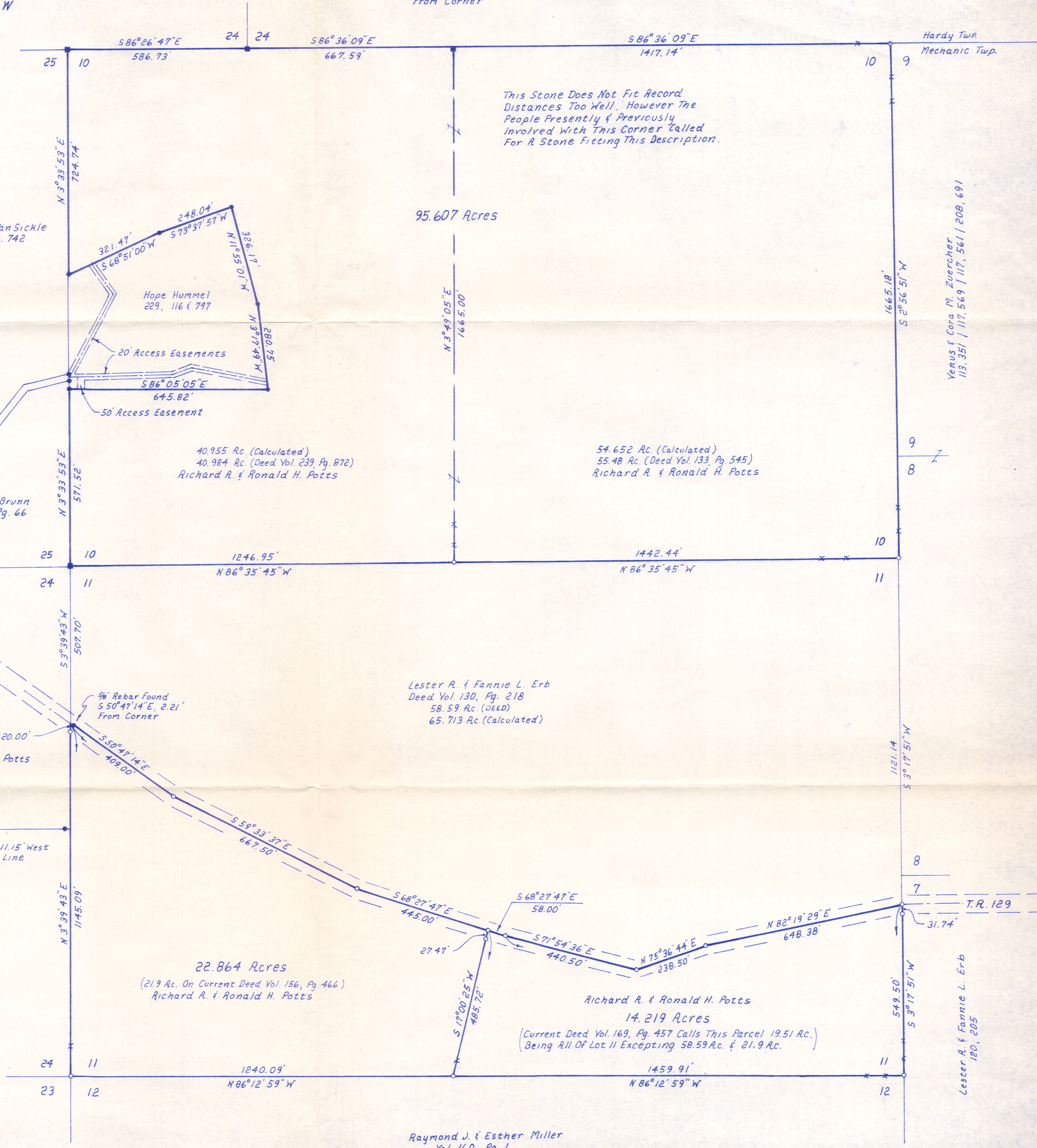
22.864 Acres
(21.9 Ac. On Current Deed Vol. 156, Pg. 466)
Richard A. & Ronald H. Potts

Richard A. & Ronald H. Potts
14.219 Acres
(Current Deed Vol. 169, Pg. 457 Calls This Parcel 19.51 Ac.)
(Being All Of Lot 11 Excepting 58.59 Ac. & 21.9 Ac.)

Raymond J. & Esther Miller
Vol. 160, Pg. 1

Venus & Cora M. Zuercher
113, 351 | 117, 569 | 117, 561 | 208, 691

Lester A. & Fannie L. Erb
180, 205



MAP OFFICE COPY