

KNOX TOWNSHIP
 HOLMES COUNTY OHIO
 S.W. Qtr., Sec. 13, T-9 N, R-9-W

Drabenstott

NW Cor.
 SW Qtr.
 Sec. 13

References;
 18" Hickory W 13.5'
 15" Maple NE 8.0'
 5" Beech E 4.0'

14.039 Acres

Scale In Feet



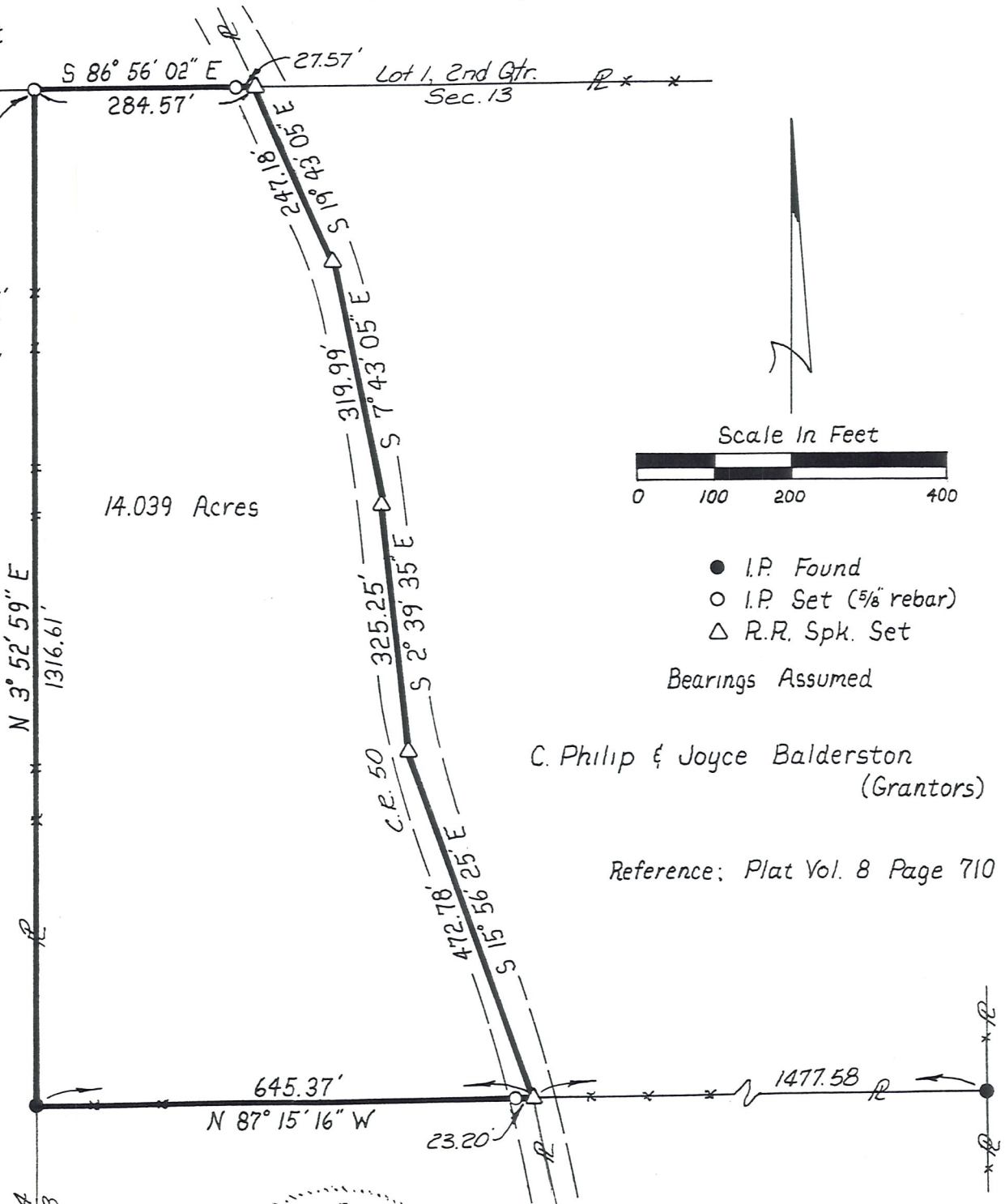
- I.P. Found
- I.P. Set (5/8" rebar)
- △ R.R. Spk. Set

Bearings Assumed

C. Philip & Joyce Balderston
 (Grantors)

Reference; Plat Vol. 8 Page 710

Riegel
 N 3° 52' 59" E
 1316.61'
 Sec. 14
 Sec. 13



I Certify This Plat To Be Correct
 To The Best of My Knowledge.
William H. Long
 William H. Long R.S. 6505, March 19, 1982