

HEARTLAND SURVEYING, INC

5210 T.R. 257 MILLERSBURG, OH 44654
 PH: 330-674-4698
 Jim Shamp

SURVEY		STATE	
J. FORREST GOUR		OHIO	
COUNTY	TWP.	RNG.	TWP.
HOLMES	KNOX	9 W	9 N
4TH QUARTER, LOT 40 & SOUTHWEST QUARTER OF SECTION 18		000718	

I CERTIFY THIS PLAT & SURVEY TO BE CORRECT TO THE BEST OF MY KNOWLEDGE:



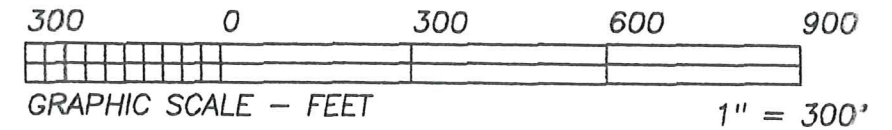
RECEIVED
 JUL 31 2000
 Hol. Co. Tax Map Office

JIM SHAMP, REG. SUR. NO. S-6088 DATE
 JULY 24, 2000

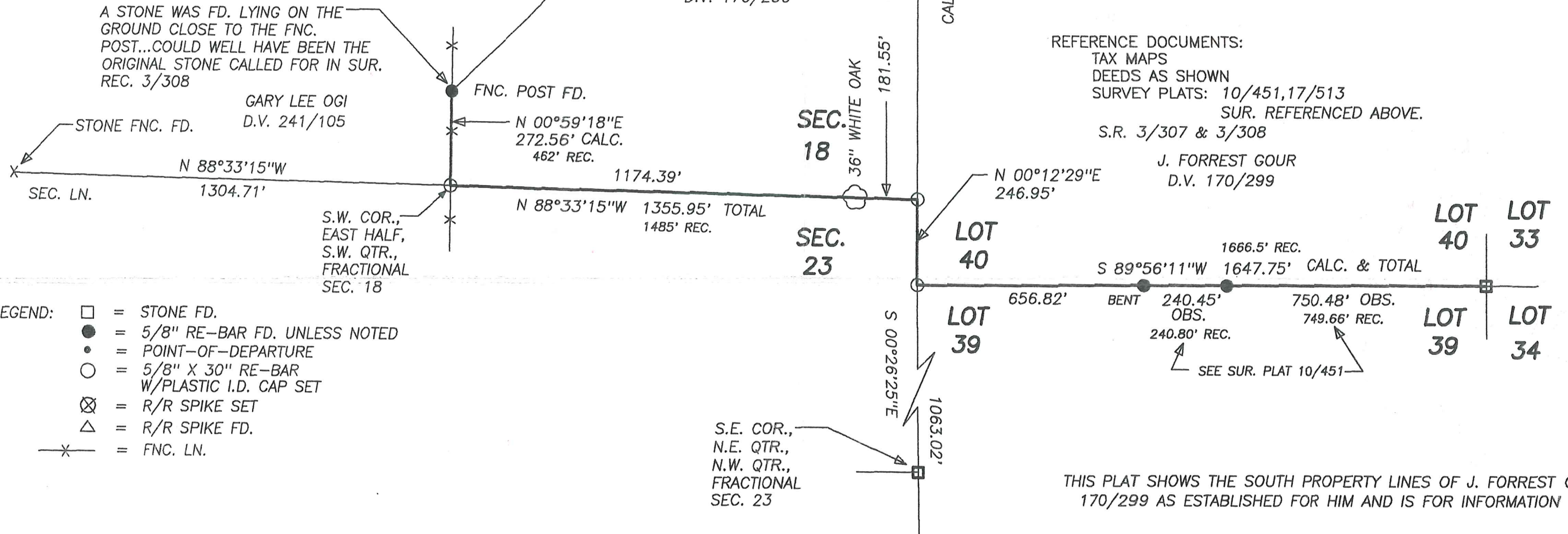
MAP OFFICE COPY



BEARINGS ARE TO AN ASSUMED MERIDIAN AND ARE USED TO DENOTE ANGULAR MEAS. ONLY.



J. FORREST GOUR
 D.V. 170/299



- LEGEND:
- = STONE FD.
 - = 5/8" RE-BAR FD. UNLESS NOTED
 - = POINT-OF-DEPARTURE
 - = 5/8" X 30" RE-BAR W/PLASTIC I.D. CAP SET
 - ⊗ = R/R SPIKE SET
 - △ = R/R SPIKE FD.
 - ✕ = FNC. LN.

REFERENCE DOCUMENTS:
 TAX MAPS
 DEEDS AS SHOWN
 SURVEY PLATS: 10/451, 17/513
 SUR. REFERENCED ABOVE.
 S.R. 3/307 & 3/308

J. FORREST GOUR
 D.V. 170/299

THIS PLAT SHOWS THE SOUTH PROPERTY LINES OF J. FORREST GOUR, D.V. 170/299 AS ESTABLISHED FOR HIM AND IS FOR INFORMATION ONLY.