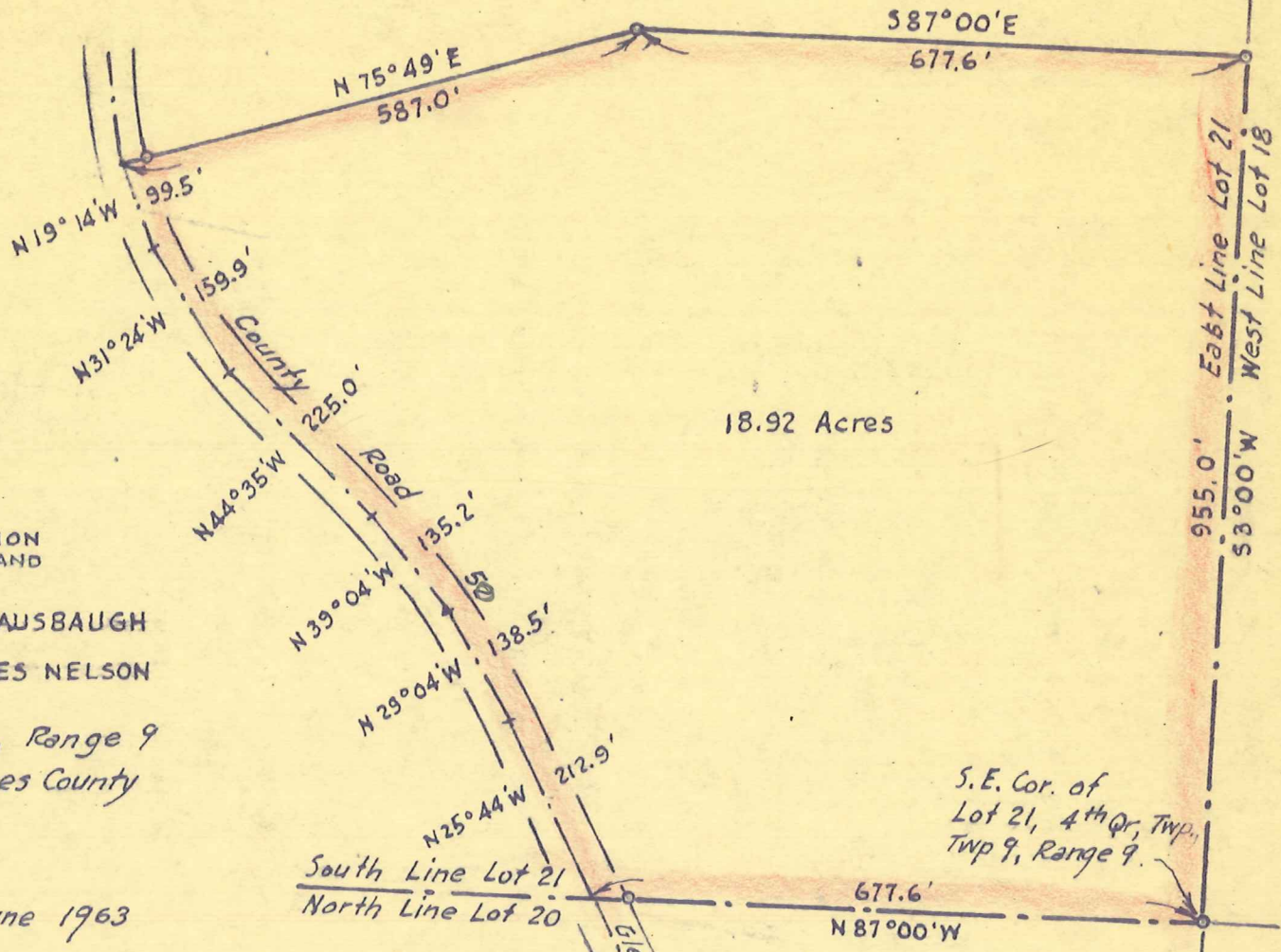


Carl J. Strausbaugh

Carl J. Strausbaugh



18.92 Acres

F. D. Kinsey

MAP SHOWING LOCATION OF A TRACT OF LAND DEEDED BY

CARL J. & ROSE MARY STRAUSBAUGH TO JOHN WALTER & DELORES NELSON IN Lot 21, 4th Qr. Twp., Twp. 9, Range 9 Knox Township, Holmes County Ohio

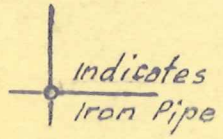
Scale 1" = 200 ft.

June 1963

Drawn from a survey by

William Sellner Reg. Sur. No. 3915

Walter W. Ruble



Indicates Iron Pipe

S.E. Cor. of Lot 21, 4th Qr, Twp., Twp 9, Range 9.