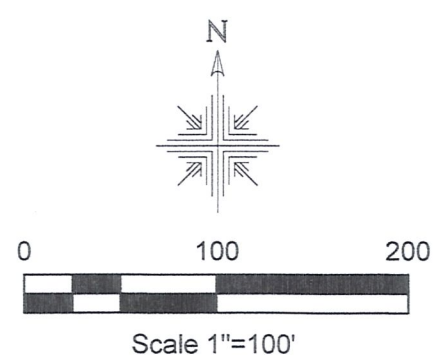


KnoxTownship
N.E., S.E. and S.W. Qtr.
Section 20
T-19 N; R-15 W
Holmes County, Ohio

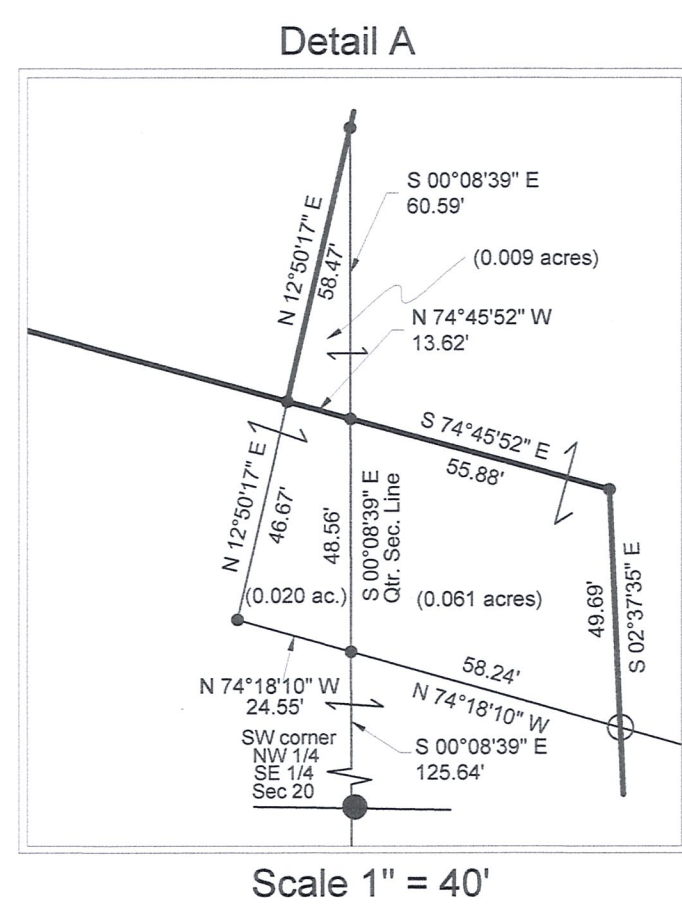
Deeds as shown

Plat Vol. 13 Page 26
Plat Vol. 19 Page 1126
Plat Vol. 16 Page 688
Plat Vol. 9 Page 194
unrecorded survey by Jamie Darr dated September 23, 1999
unrecorded survey by William McCullough dated August 6, 2006
unrecorded survey by Jan Gaverick dated October 1997

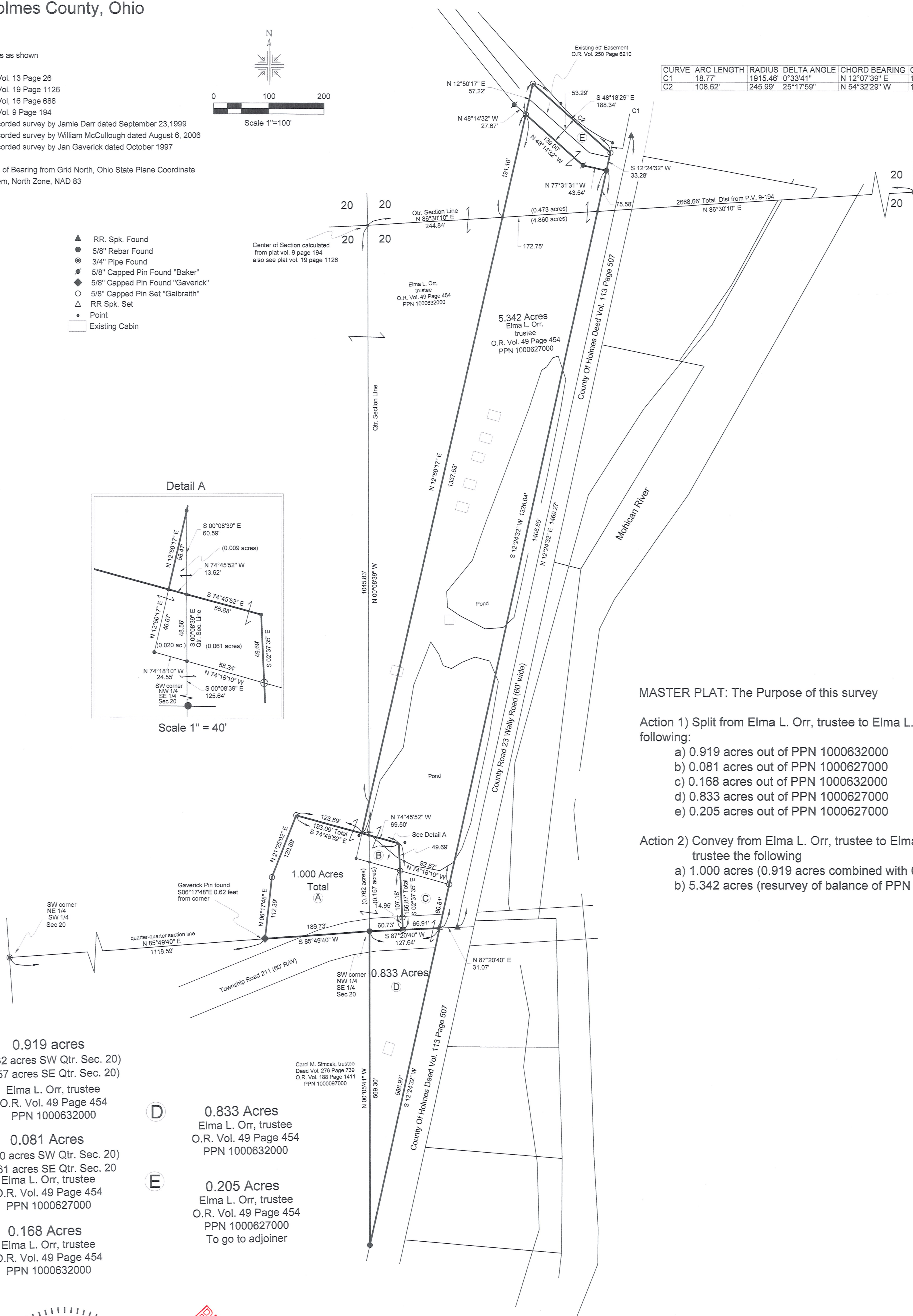
Basis of Bearing from Grid North, Ohio State Plane Coordinate System, North Zone, NAD 83



- ▲ RR. Spk. Found
- 5/8" Rebar Found
- ⊙ 3/4" Pipe Found
- ⊕ 5/8" Capped Pin Found "Baker"
- ⊕ 5/8" Capped Pin Found "Gaverick"
- 5/8" Capped Pin Set "Galbraith"
- △ RR Spk. Set
- Point
- Existing Cabin



CURVE	ARC LENGTH	RADIUS	DELTA ANGLE	CHORD BEARING	CHORD LENGTH
C1	18.77'	1915.46'	0°33'41"	N 12°07'39" E	18.77'
C2	108.62'	245.99'	25°17'59"	N 54°32'29" W	107.74'



MASTER PLAT: The Purpose of this survey

Action 1) Split from Elma L. Orr, trustee to Elma L. Orr, trustee the following:

- a) 0.919 acres out of PPN 1000632000
- b) 0.081 acres out of PPN 1000627000
- c) 0.168 acres out of PPN 1000632000
- d) 0.833 acres out of PPN 1000627000
- e) 0.205 acres out of PPN 1000627000

Action 2) Convey from Elma L. Orr, trustee to Elma L. Orr, trustee the following

- a) 1.000 acres (0.919 acres combined with 0.081 acres)
- b) 5.342 acres (resurvey of balance of PPN 1000627000)

- A** 0.919 acres
(0.762 acres SW Qtr. Sec. 20)
(0.157 acres SE Qtr. Sec. 20)
Elma L. Orr, trustee
O.R. Vol. 49 Page 454
PPN 1000632000
- B** 0.081 Acres
(0.020 acres SW Qtr. Sec. 20)
(0.061 acres SE Qtr. Sec. 20)
Elma L. Orr, trustee
O.R. Vol. 49 Page 454
PPN 1000627000
- C** 0.168 Acres
Elma L. Orr, trustee
O.R. Vol. 49 Page 454
PPN 1000632000

- D** 0.833 Acres
Elma L. Orr, trustee
O.R. Vol. 49 Page 454
PPN 1000632000
- E** 0.205 Acres
Elma L. Orr, trustee
O.R. Vol. 49 Page 454
PPN 1000627000
To go to adjoiner



I certify the above is correct to the best of my knowledge.

PRELIMINARY FOR REVIEW ONLY

Caleb Jerome Galbraith, S-8703
Date: July 3, 2018
Job ID: 4918

Pioneer Surveying & Services, LLC.
4090 Township Road 271
Killbuck, Ohio 44637
Phone: 330-276-0220
Email: caleb@pioneersurveyingandservices.com

