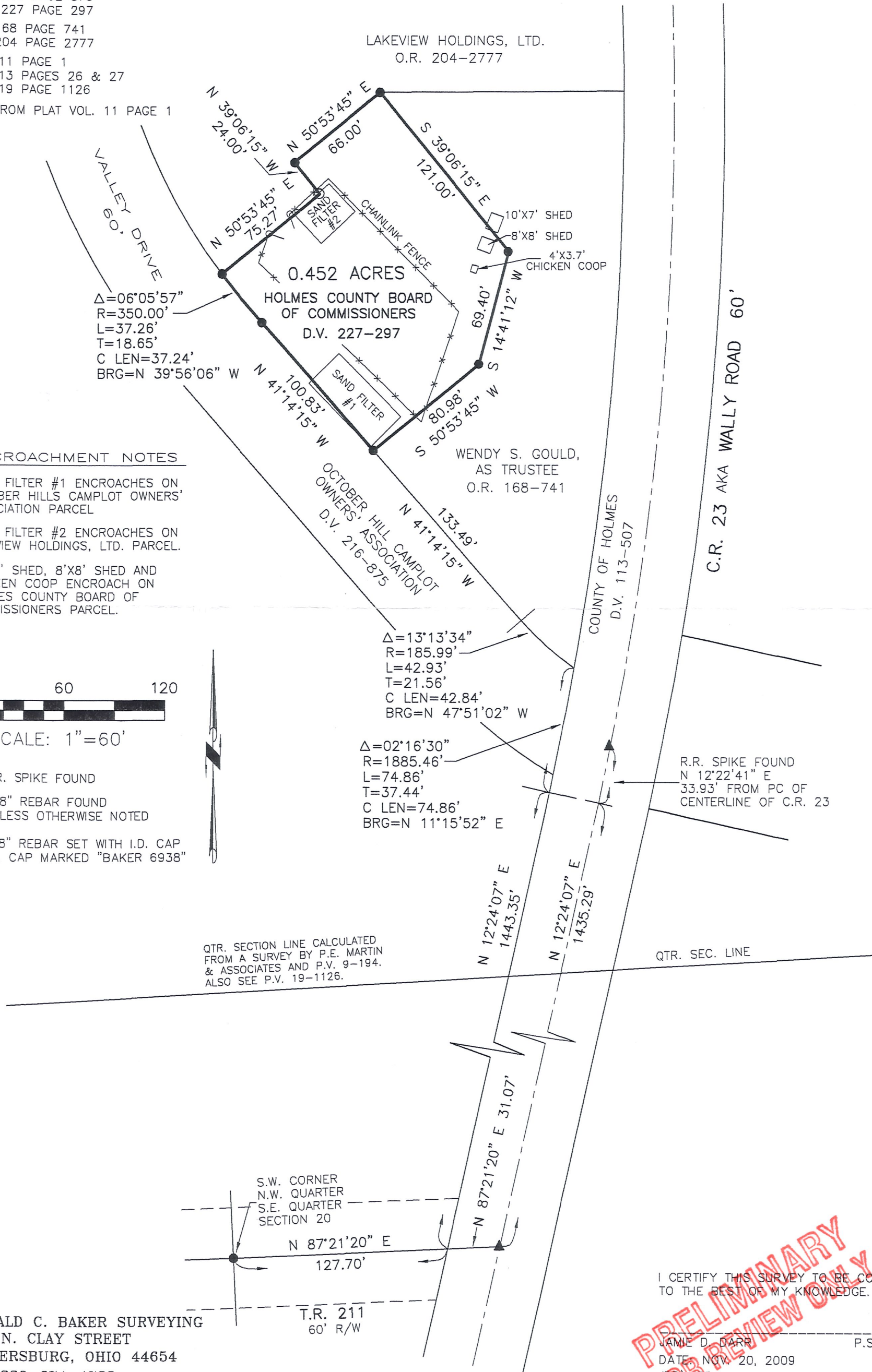


KNOX TOWNSHIP
N.E. QTR. SECTION 20
T-19 N; R-15 W
HOLMES COUNTY, OHIO

SURVEYED FOR: HOLMES COUNTY SEWER DISTRICT

REFERENCES

- DEED VOL. 216 PAGE 875
- DEED VOL. 227 PAGE 297
- O.R. VOL. 168 PAGE 741
- O.R. VOL. 204 PAGE 2777
- PLAT VOL. 11 PAGE 1
- PLAT VOL. 13 PAGES 26 & 27
- PLAT VOL. 19 PAGE 1126
- BEARINGS FROM PLAT VOL. 11 PAGE 1

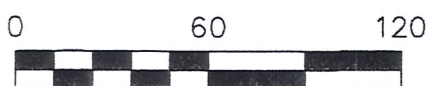


ENCROACHMENT NOTES

SAND FILTER #1 ENCROACHES ON OCTOBER HILLS CAMPLLOT OWNERS' ASSOCIATION PARCEL

SAND FILTER #2 ENCROACHES ON LAKEVIEW HOLDINGS, LTD. PARCEL.

10'X7' SHED, 8'X8' SHED AND CHICKEN COOP ENCROACH ON HOLMES COUNTY BOARD OF COMMISSIONERS PARCEL.



SCALE: 1"=60'

- ▲ R.R. SPIKE FOUND
- 5/8" REBAR FOUND UNLESS OTHERWISE NOTED
- 5/8" REBAR SET WITH I.D. CAP I.D. CAP MARKED "BAKER 6938"

QTR. SECTION LINE CALCULATED FROM A SURVEY BY P.E. MARTIN & ASSOCIATES AND P.V. 9-194. ALSO SEE P.V. 19-1126.

QTR. SEC. LINE



DONALD C. BAKER SURVEYING
138 N. CLAY STREET
MILLERSBURG, OHIO 44654
PH. 330-674-4788
FAX 330-674-6027

T.R. 211
60' R/W

I CERTIFY THIS SURVEY TO BE CORRECT TO THE BEST OF MY KNOWLEDGE.

JAMIE D. DARR P.S. 7755
DATE: NOV. 20, 2009
JDD/KES
FILE NAME: WORK3\S-567-09\ERZ

PRELIMINARY FOR REVIEW ONLY