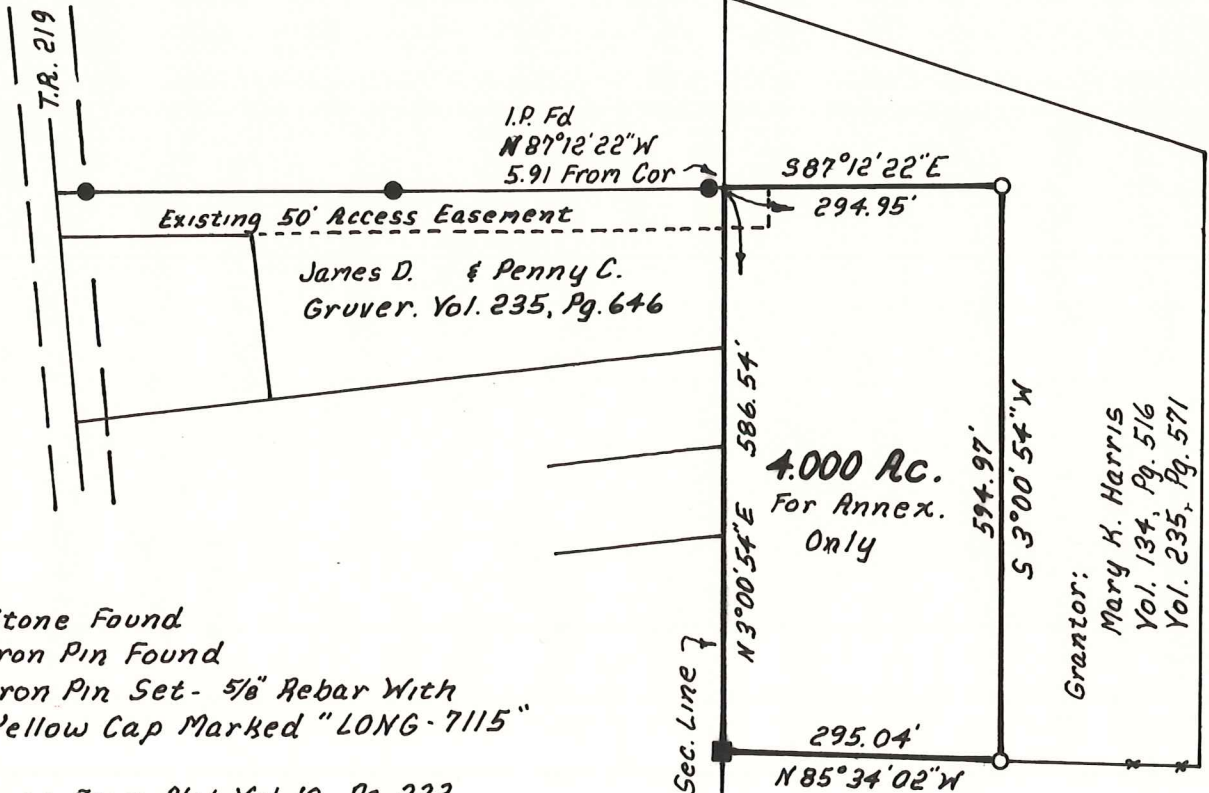
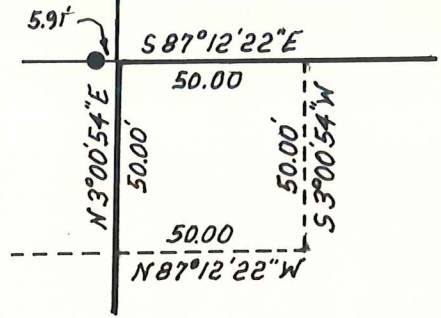


**KNOX TOWNSHIP  
HOLMES COUNTY, OHIO  
N.E. QTR., SEC. 19, T-17N, R-14W**



DETAIL  
50' Access Easement



- Stone Found
- Iron Pin Found
- Iron Pin Set - 5/8" Rebar With Yellow Cap Marked "LONG-7115"

Bearings From Plat Vol 10, Pg. 233

Other References:

- P.V. 5, Pg. 88
- P.V. 10, Pg. 762
- Wm Long Survey
- Dated 9-17-87

**4.000 Ac.**  
For Annex.  
Only

Grantor:  
Mary K. Harris  
Vol. 134, Pg. 516  
Vol. 235, Pg. 571

Julia Ann Shank  
140-374, 141-237

**MAP OFFICE COPY**

I Certify This Survey To Be Correct  
To The Best Of My Knowledge.

Donald G. Long Oct. 17, 1989  
Donald G. Long P.S. 7115  
LONG SURVEYING INC.  
12524 C.R. 6  
Killbuck, Ohio 44637

19	19
19	19

