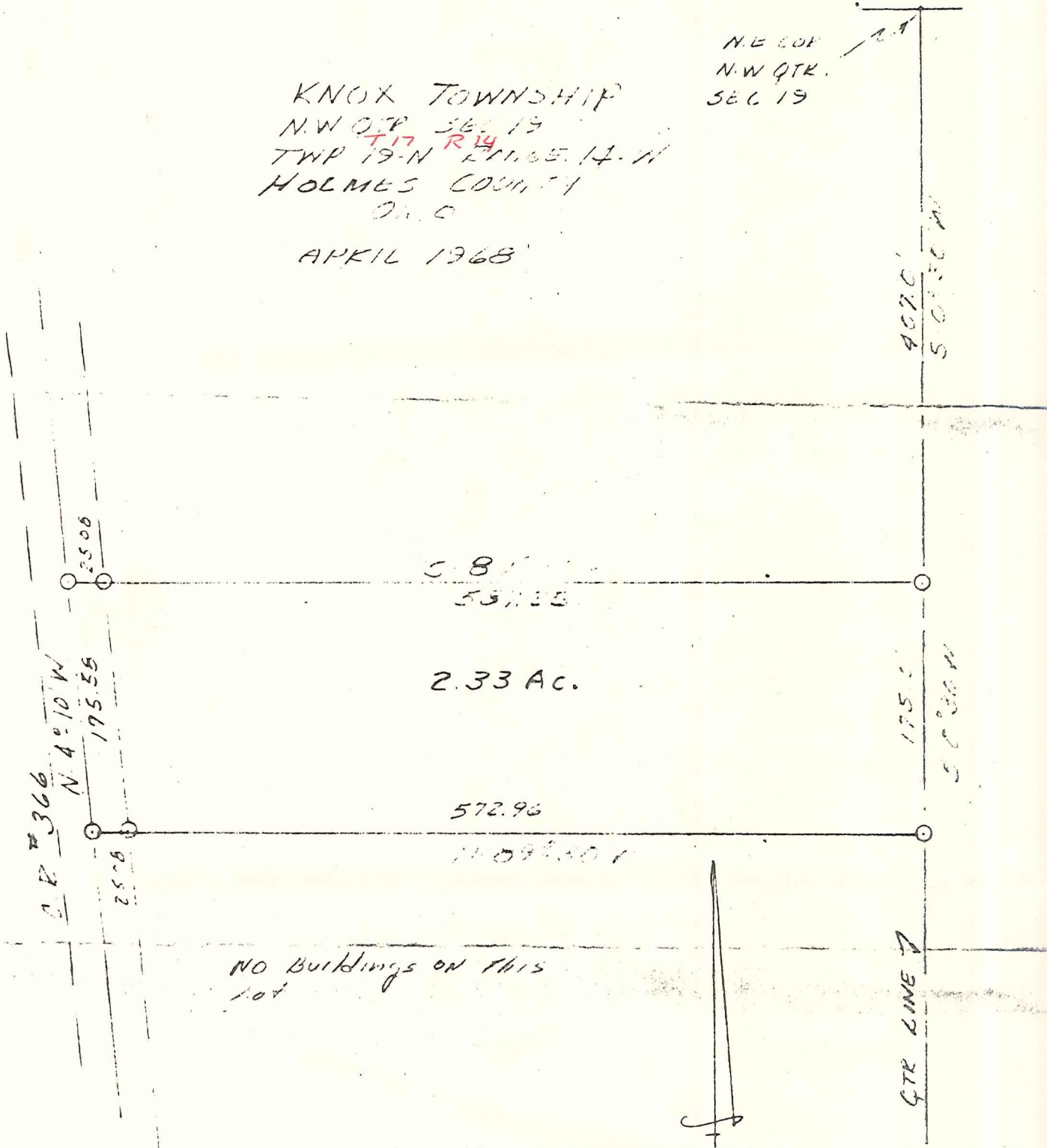


KNOX TOWNSHIP
 N.W. QTR. SEC. 19
 TWP 19-N R. 17 E. 14-W
 HOLMES COUNTY
 I.O.C.

N.E. COR.
 N.W. QTR.
 SEC. 19

APRIL 1968



NO BUILDINGS ON THIS
 LOT

SCALE 1" = 100'
 QZK SET

I HEREBY CERTIFY THIS PLAT TO
 BE CORRECT TO THE BEST OF MY
 KNOWLEDGE.

Clyde E. Purdy
 CLYDE E. PURDY R.S. #4900

MAP OFFICE COPY