

Mildred Carpenter
131-55

Robert D. & Mary V. Hoxworth
169-535

Robert D. & Mary V. Hoxworth
169-535

S. 88° 20' 42" E. 293.89'
273.89'

Township Rd 53

20.00'
S. 3° 41' 00" W. 111.25'

2.065 Ac. ±

$\Delta = 14^{\circ} 38' 16''$
 $D_c = 6^{\circ} 17' 25''$
 $R = 910.87'$
 $T = 116.99'$
 $L = 232.71'$
 $Ch = 232.07'$
 $Ch Br = S. 11^{\circ} 00' 08'' W.$

N. 4° 38' 48" E. 275.73'

N. 74° 40' 26" W. 274.42'
251.86'

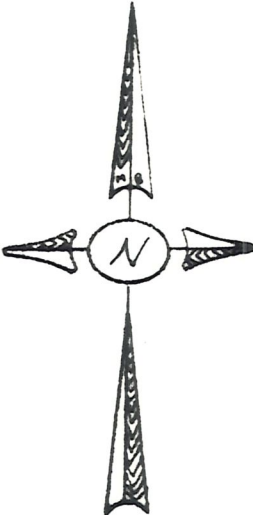
N. 15° 43' 12" E. 99.35'
22.56'

N. 2° 33' 24" W. 855.80'

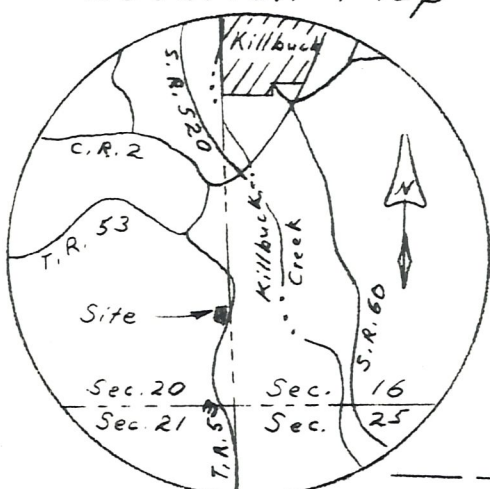
N. 5° 03' 11" W. 303.37'

N. 86° 26' 30" W. 137.74'

S.E. corner Section 20



Location Map



"No Scale"

LEGEND

- Property line
- Section line
- Centerline
- Iron pipe set
- Point
- Road

ROBERT D. & MARY V.
HOXWORTH

Being a tract of land in the East part of the Southeast Quarter of Section 20, Township, 8N., Range 8W., Killbuck Township, Holmes County, Ohio

Scale: 1" = 60'

August 1978

MAP OFFICE COPY

I HEREBY CERTIFY THAT THIS PLAT IS A TRUE DELINEATION OF A SURVEY BY
GEORGE W. JOHNSON R.S. #5252

Buckeye Land Surveying, Inc.
 George W. Johnson 215 South Fifth Street, R. ° Coshocton, Ohio 43812 (614) 622-4210
 Professional Land Surveyor "Service is more than a promise"