

S.W. corner Sec 9, T8N, R8W  
Killbuck Twp., Hol. Co., Ohio  
P.B. 10 Pg. 9  
Used a corner  
post in 1982.  
P.B. 12 Pg. 420  
set an iron  
pin and  
used it in  
1990.

Sec. 13, T8N, R8W  
Killbuck Twp., Hol.  
Co., Ohio

This corner was not  
called out as existing  
in either P.B. 12 Pg. 420  
or P.B. 10 Pg. 9

Frank Richards  
Vol. 228 Pg. 591

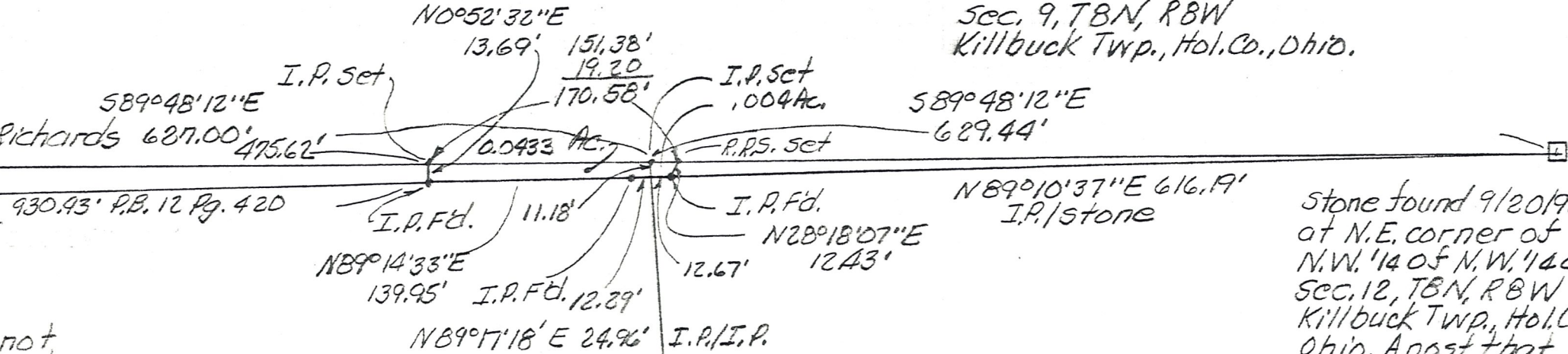
Helen Russell  
Vol. 229 Pg. 378

Robert Mitchell & Deborah A. Cooper  
P.B. 12 Pg. 420  
Vol. 247 Pg. 116

Helen Russell  
Vol. 229 Pg. 378

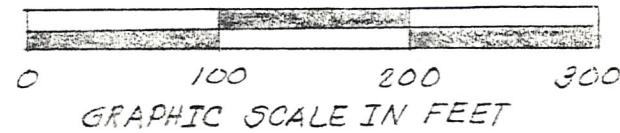
Sec. 9, T8N, R8W  
Killbuck Twp., Hol. Co., Ohio.

Iron Pin found at N.W.  
corner Sec. 12, T8N, R8W  
This was in a mortgage  
survey in 1986 for Frank Richards



Stone found 9/20/92  
at N.E. corner of  
N.W. 1/4 of N.W. 1/4 of  
Sec. 12, T8N, R8W  
Killbuck Twp., Hol. Co.,  
Ohio. A post that  
leaned over this  
stone was used as  
a corner in 1982,  
P.B. 10 Pg. 9  
Above plat used for  
bearing basis.  
P.B. 12 Pg. 420 makes  
no mention of either  
post or stone.

53°15'49\"E, 297.72' = 11.18' + 1,286.54'  
Stone found at S.E. corner  
of W. 1/2 of N.W. 1/4 of N.W. 1/4  
Sec. 12, T8N, R8W, of  
Killbuck Twp., Hol. Co., Ohio



Known as part of the  
N.W. 1/4 of the N.W. 1/4 of  
Sec. 12, T8N, R8W of  
Killbuck Twp., Hol. Co., Ohio

Robert L. Kasner P.S. 5193  
P.E. 28820  
311193

