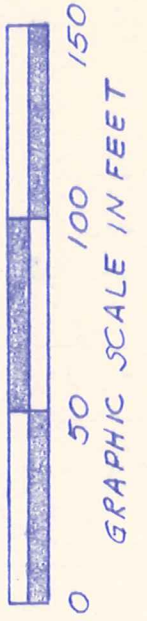
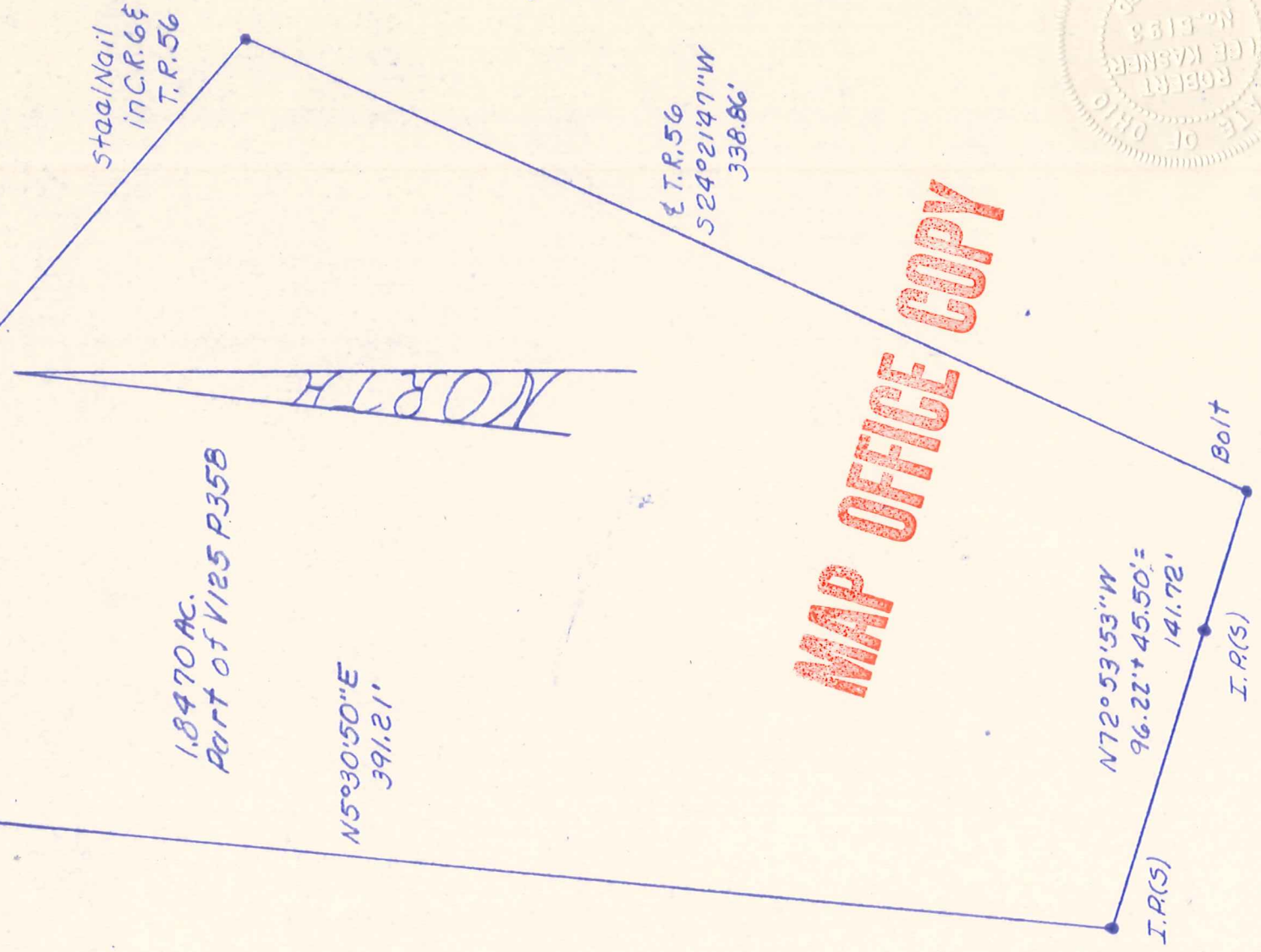


"A"
 N45°07'17"E
 37.43+25.99'
 = 63.42'

Steel Nail in C.R. 6

Point A is the following 4 courses
 FROM SW CORNER S9, T8N, R8W of
 KIL TWP, HOL. CO., OHIO
 N3°24'35"E 1366.9'
 S82°44'27"E 716.94'
 S39°00'03"E 184.97'
 S32°43'43"E 541.33'

I.R.(S)
 549°03'43"E
 255.10'



PLAT OF A SURVEY FOR
 A. EARL RUSSELL (Gr't'r)
 KNOWN AS PART OF S.W. 1/4,
 S9, T8N, R8W, of Kill buck
 TWP., HOL. CO., OHIO.
 Robert L. Kasner P.S. 5193
 P.E. 28820,
 11/20/81