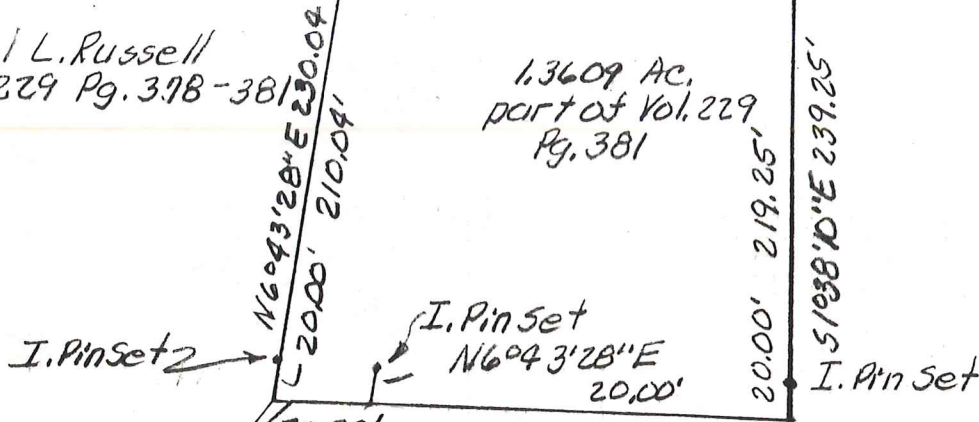




Helen L. Russell
Vol. 229 Pg. 378-381

I. Pinset
50.63' NB7° 40' 55" E 186.41' + 50.63' = 237.04'
I. Pinset = 237.04'

1.3609 Ac.
part of Vol. 229
Pg. 381

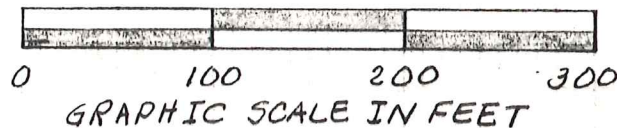


N.W. corner N.E. '14
S.W. '14 Sec. 8 T8N
R8W

N89°45'57" W 20.00' + 50.32'
T.R. 63 (30' R/W) = 270.61'

N41°02'40" E 862.80'

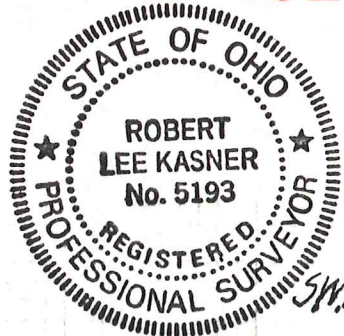
MAP OFFICE COPY



PLAT OF A SURVEY FOR
Helen L. Russell
Grantor

Known as part of the N.E. '14
of S.W. '14 Sec. 8, T8N, R8W of
Killbuck Twp, Hol. Co., Ohio

Robert L. Kasner P.S. 5193
P.E. 28820
416193



SW corner SE '14
SW '14 Sec. 8, T8N R8W

N5°00'00" E 1378.00'
1378.00'
Rail road spike
found in West
bound lane C.R. 6
at SW corner NE '14
of S.W. '14 of Sec. 8,
T8N, R8W. P.B. 12 Pg. 391