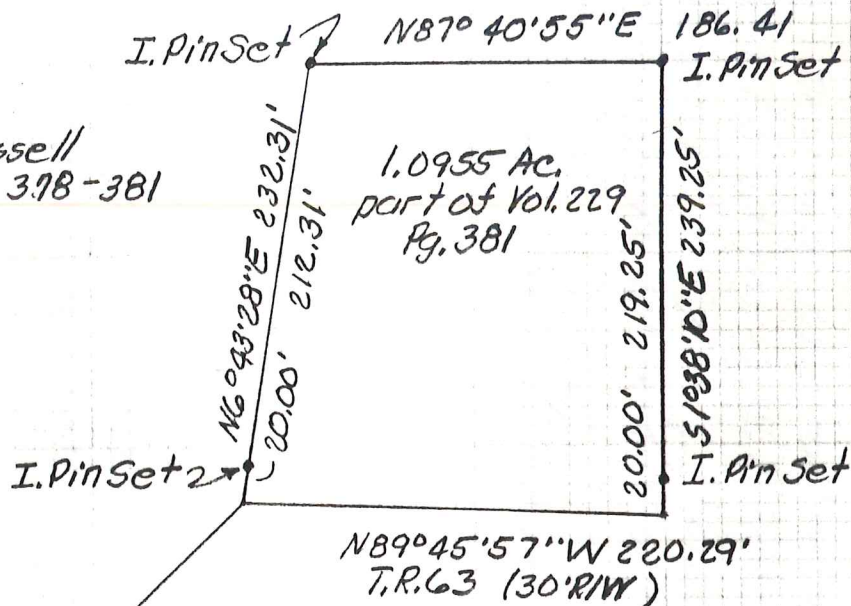




Helen L. Russell
Vol. 229 Pg. 378-381



N.W. corner N.E. '14
S.W. '14 Sec. 8 T8N
R8W

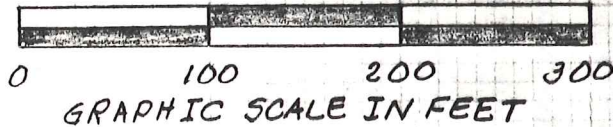
N43° 28' 46" E 896.49'

N5° 00' 00" E
1378.00'
1318.00'

Rail road spike
found in West
bound lane C.R. 6
at SW corner NE '14
of S.W. '14 of Sec. 8,
T8N, R8W. P.B. 12 Pg. 391

SW corner SE '14
SW '14 Sec. 8, T8N R8W

MAP OFFICE COPY



PLAT OF A SURVEY FOR
Helen L. Russell
Grantor

Known as part of the N.E. '14
of S.W. '14 Sec. 8, T8N, R8W of
Killbuck Twp, Hol. Co., Ohio

Robert L. Kasner P.S. 5193
P.E. 28820
416193