

KILLBUCK TOWNSHIP
 S.E. QTR. SECTION 1
 T-8N; R-8W
 HOLMES COUNTY, OHIO

PLAT OF CORRECTION



SCALE: 1" = 200'

● IRON PIN FOUND

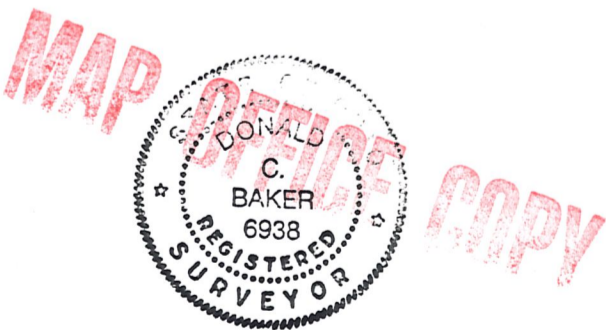
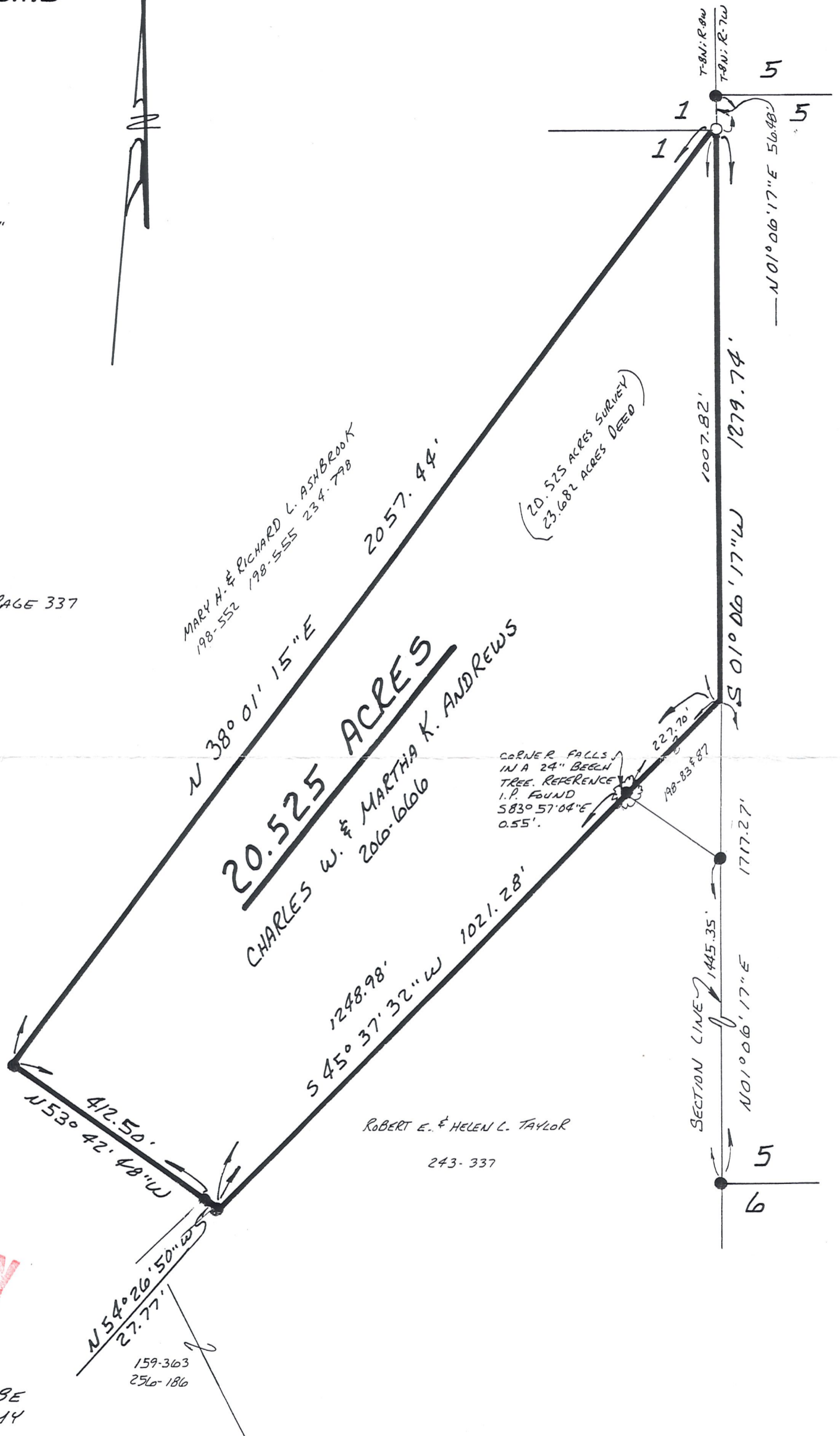
○ 5/8" REBAR WITH I.D. CAP SET
 I.D. CAP MARKED "BAKER 6938"



REFERENCES:

- PLAT VOL. 10 PAGE 140
- PLAT VOL. 8 PAGE 458
- PLAT VOL. 13 PAGE 69
- DEED VOL. 234 PAGE 798
- DEED VOL. 243 PAGE 337

BEARINGS FROM DEED VOL. 243 PAGE 337



I CERTIFY THIS SURVEY TO BE CORRECT TO THE BEST OF MY KNOWLEDGE.

Donald C. Baker

DONALD C. BAKER P.S. 6938
 5958 T.R. 322
 MILLERSBURG, OHIO 44654
 PH. (216) 674-4788
 DECEMBER 15, 1992