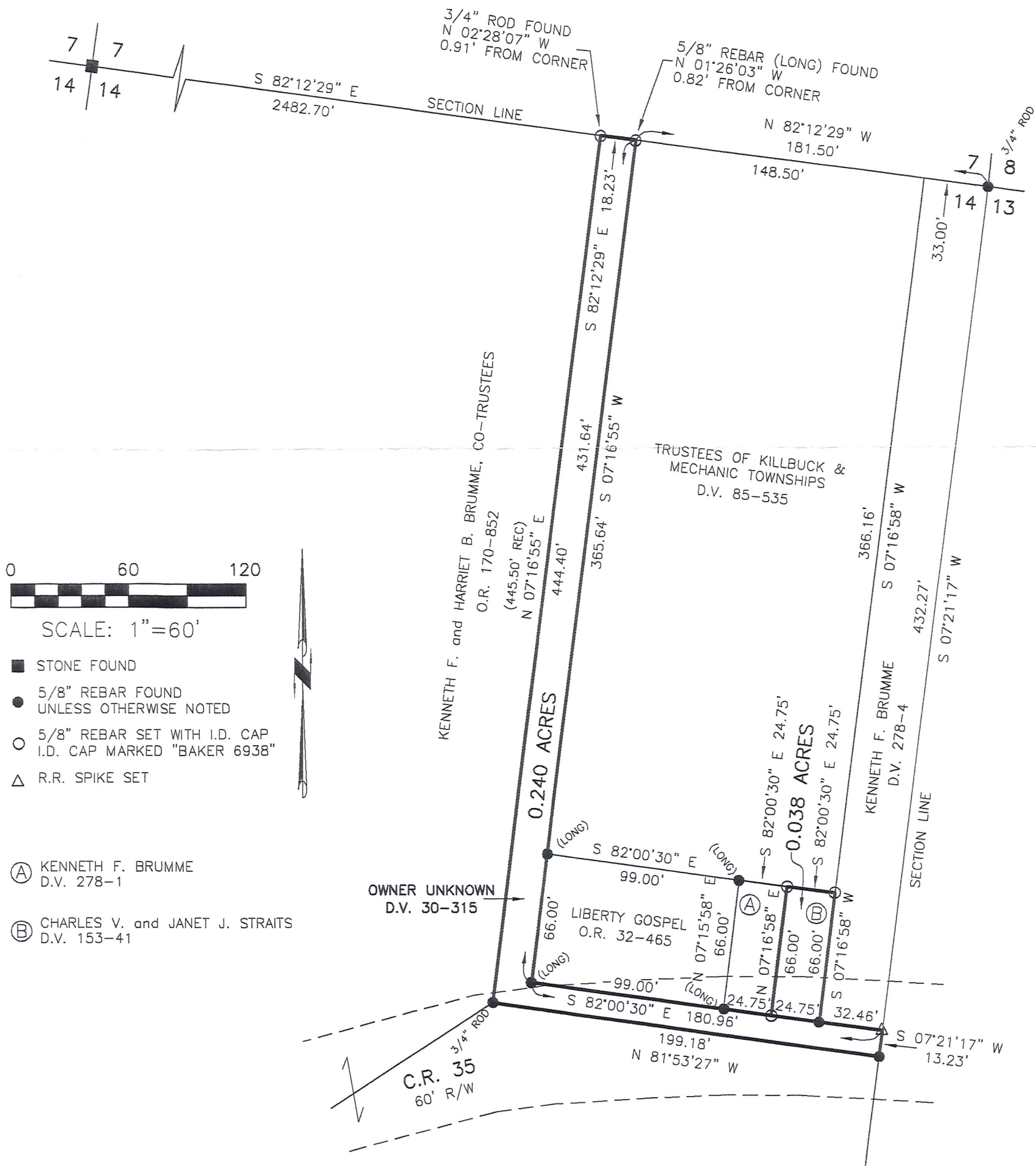


KILLBUCK TOWNSHIP  
N.E. QTR. SECTION 14  
T-8 N; R-7 W  
HOLMES COUNTY, OHIO

SURVEYED FOR: KENNETH BRUMME

REFERENCES

- DEED VOL. 30 PAGE 315
- DEED VOL. 59 PAGE 342
- DEED VOL. 78 PAGE 584
- DEED VOL. 85 PAGE 535
- DEED VOL. 153 PAGE 41
- DEED VOL. 287 PAGES 1 & 4
- O.R. VOL. 32 PAGE 465
- O.R. VOL. 170 PAGE 852
- PLAT VOL. 1 PAGE 201
- PLAT VOL. 10 PAGE 697
- PLAT VOL. 14 PAGE 345
- PLAT VOL. 16 PAGE 581
- SURVEY RECORD 1 PAGE 201
- UNRECORDED SURVEY BY WILLIAM H. LONG  
OF 1.324 ACRES DATED 5-23-1985.
- BEARINGS FROM PLAT VOL. 14 PAGE 345



I CERTIFY THIS SURVEY TO BE CORRECT TO THE BEST OF MY KNOWLEDGE.

JAMIE D. DARR P.S. 7755  
DATE: OCT. 28, 2008  
JDD\LC\ALC  
FILE NAME: WORK3\S-510-08\ERZ



DONALD C. BAKER SURVEYING  
138 N. CLAY STREET  
MILLERSBURG, OHIO 44654  
PH. 330-674-4788  
FAX 330-674-6027

PRELIMINARY  
FOR REVIEW ONLY