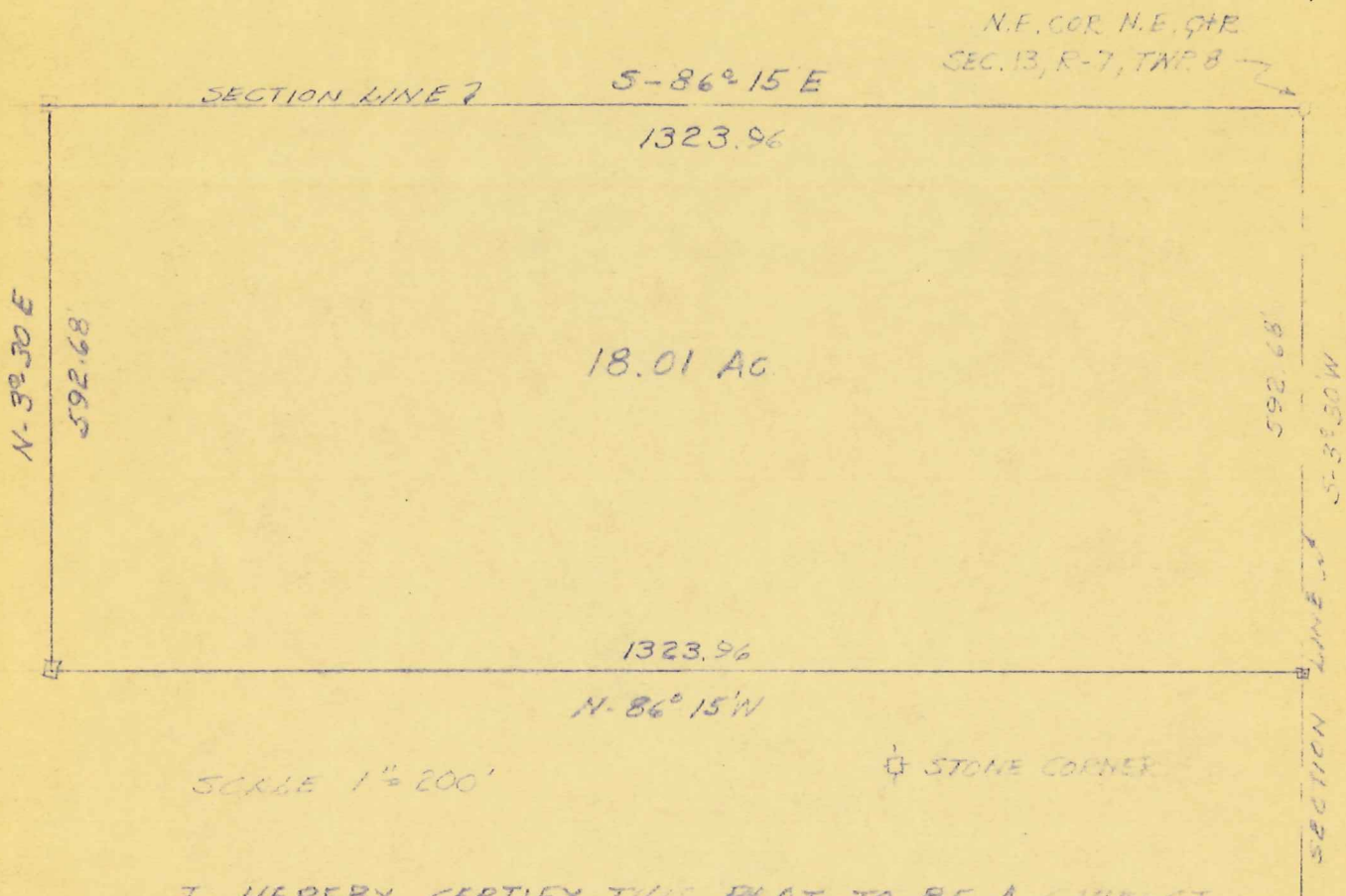


KILLBUCK TOWNSHIP
HOLMES, COUNTY



I HEREBY CERTIFY THIS PLAT TO BE A CORRECT
RETURN OF NOTES COMPILED FROM DEED DESCRIPTION
OF A 18.01 ACRE TRACT IN THE NORTH EAST QUARTER OF
SECTION 13, TOWNSHIP 8, AND RANGE 7 IN THE COUNTY
OF HOLMES, STATE OF OHIO.

OCT. 7, 1963

Clyde E. Purdy
CLYDE E. PURDY R.S. #4700

MAP OFFICE COPY

TRACT #1

4