



SCALE: 1"=200'

- 5/8" REBAR FOUND UNLESS OTHERWISE NOTED
- 5/8" REBAR WITH I.D. CAP SET I.D. CAP MARKED "BAKER 6938"

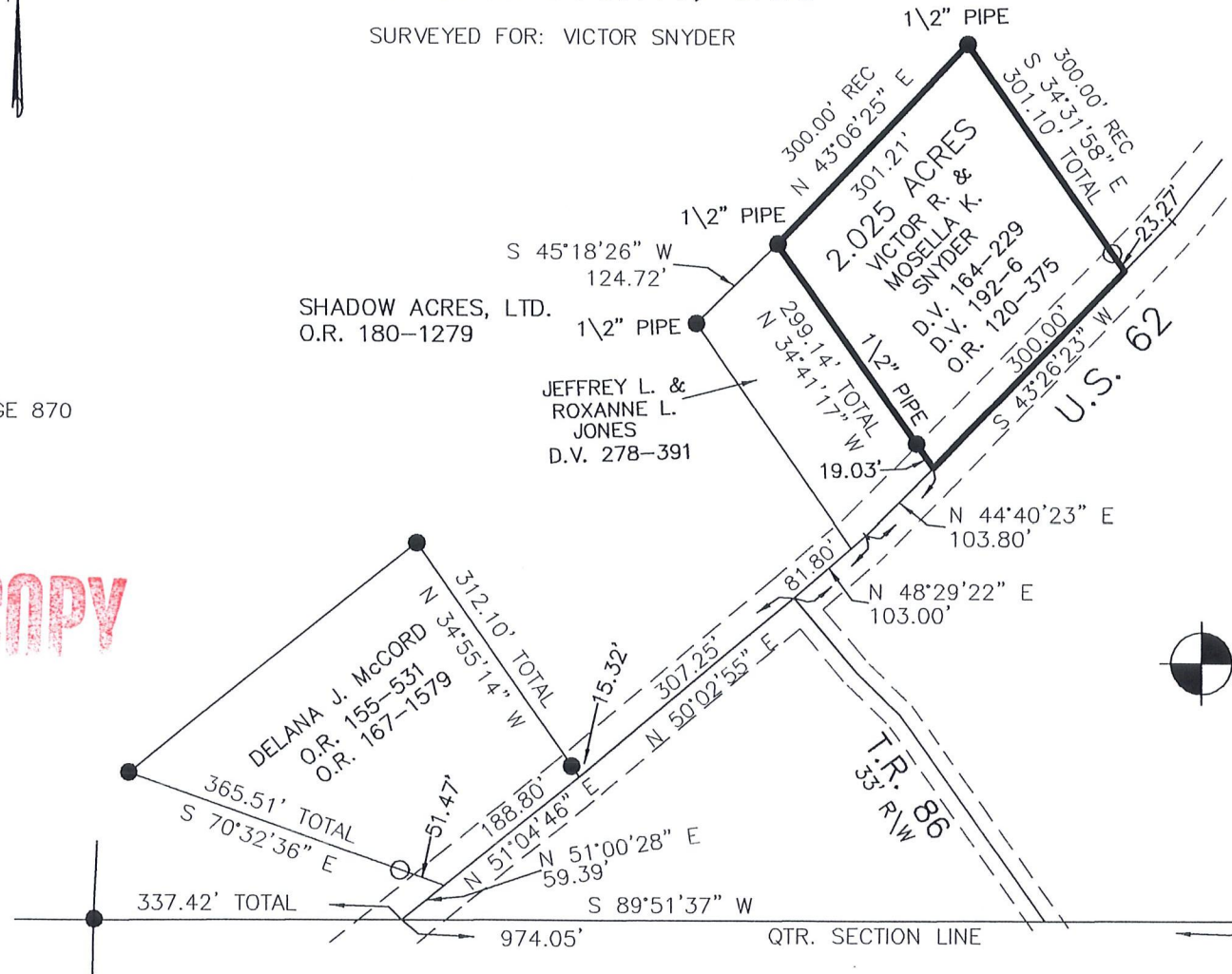
REFERENCES:

DEED VOL. 278 PAGE 391  
 O.R. VOL. 120 PAGE 375  
 O.R. VOL. 167 PAGE 1579  
 PLAT VOL. 5 PAGE 104  
 PLAT VOL. 12 PAGE 310  
 PLAT VOL. 17 PAGE 870

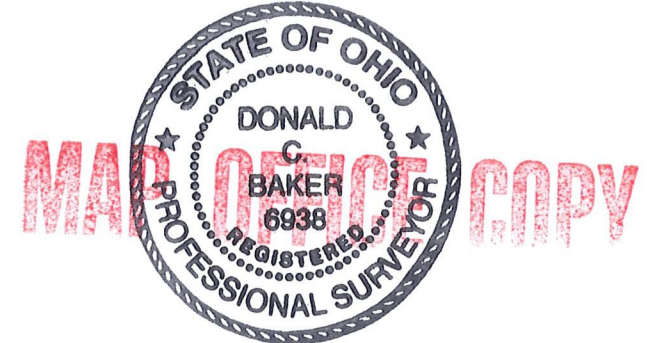
BEARINGS FROM PLAT VOL. 17 PAGE 870

KILLBUCK TOWNSHIP  
 N.W. QTR. SECTION 8  
 T-8 N; R-7 W  
 HOLMES COUNTY, OHIO

SURVEYED FOR: VICTOR SNYDER



DONALD C. BAKER SURVEYING  
 138 N. CLAY ST.  
 MILLERSBURG, OH 44654  
 PH. 330-674-4788  
 FAX: 330-674-6027



I CERTIFY THIS SURVEY TO BE CORRECT TO THE BEST OF MY KNOWLEDGE.

*Donald C. Baker*  
 DONALD C. BAKER PS 6938  
 FDB\ALG DATE: MAY 24, 2005  
 File Name: C:\JOBS\S-100-05  
 S-237-05

8 | 8  
 8 | 8