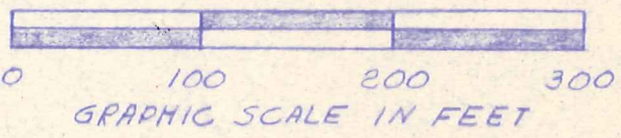
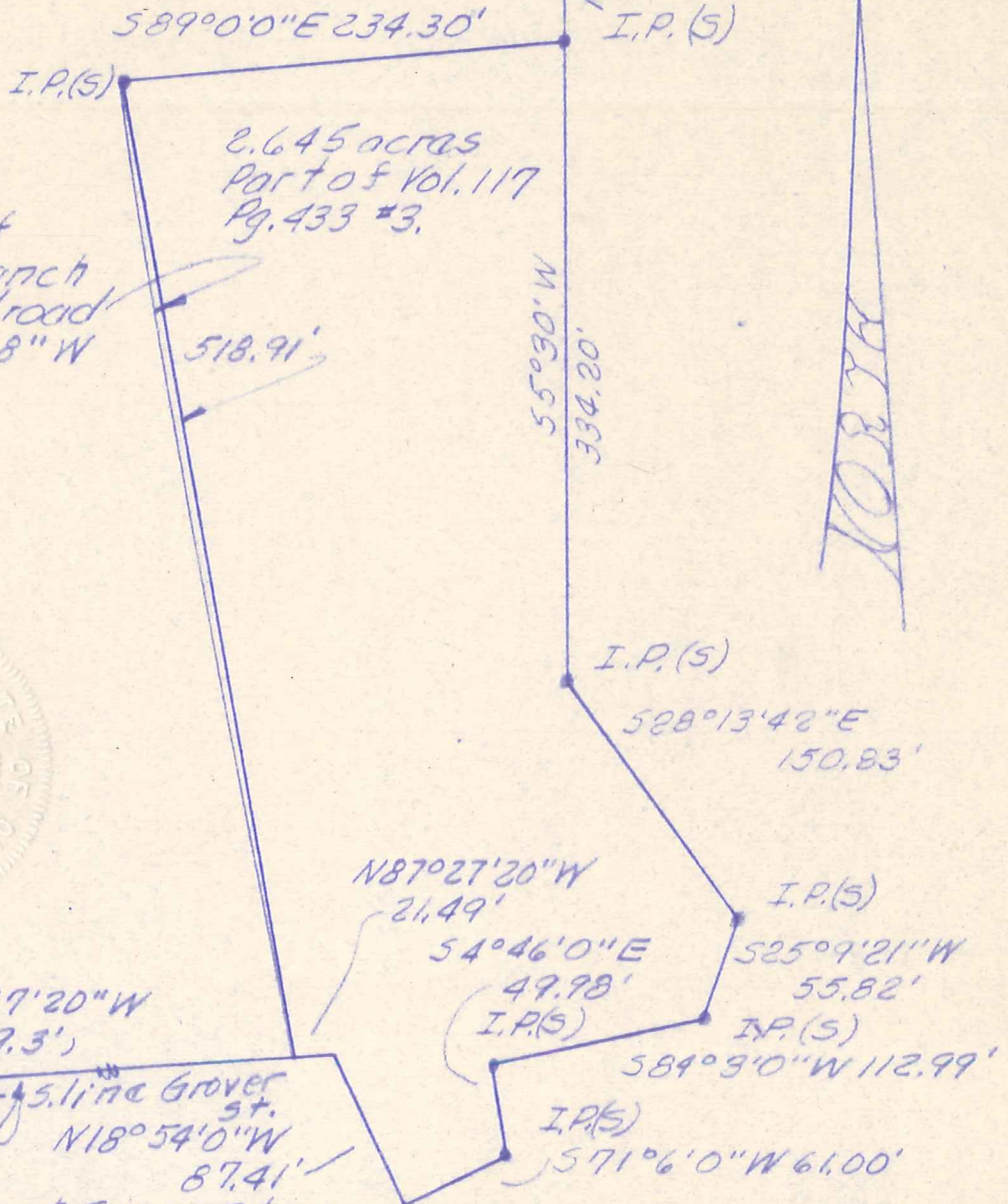


conc. Monument (F)

Stone on N. line S15, T8N, R7W on N.E. corner of a 0.53 acre tract deeded to Killbuck Cemetery as per Survey Record 4 Pg. 371 dated 1911.

E. R/W line of Dresden Branch of C.A. & C. Railroad L.C. = N3°46'8" W

R = 5,696.65'
D = 1°0'21"
T = 259.72'
Arc = 519.08'



JAMES E. CARPENTER SR. TO MOBIL HOMES OF OHIO
Known as part of NW 1/4 S15, T8N, R7W of Killbuck Twp., Hol. Co., Ohio.
Robert L. Kasnar, P.S. 5193
P.E. 28820

12/10/78

MAP OFFICE COPY