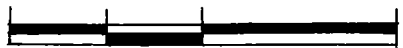


0 30 60 120



SCALE: 1" = 60'

- ▲ R.R. SPIKE FOUND
- IRON PIN FOUND
- △ R.R. SPIKE SET
- 5/8" RE BAR WITH I.D. CAP SET
- I.D. CAP MARKED "BAKER 6938"

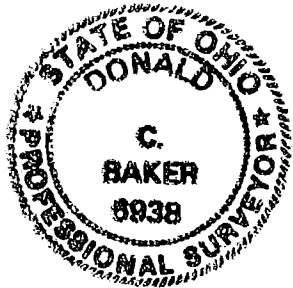
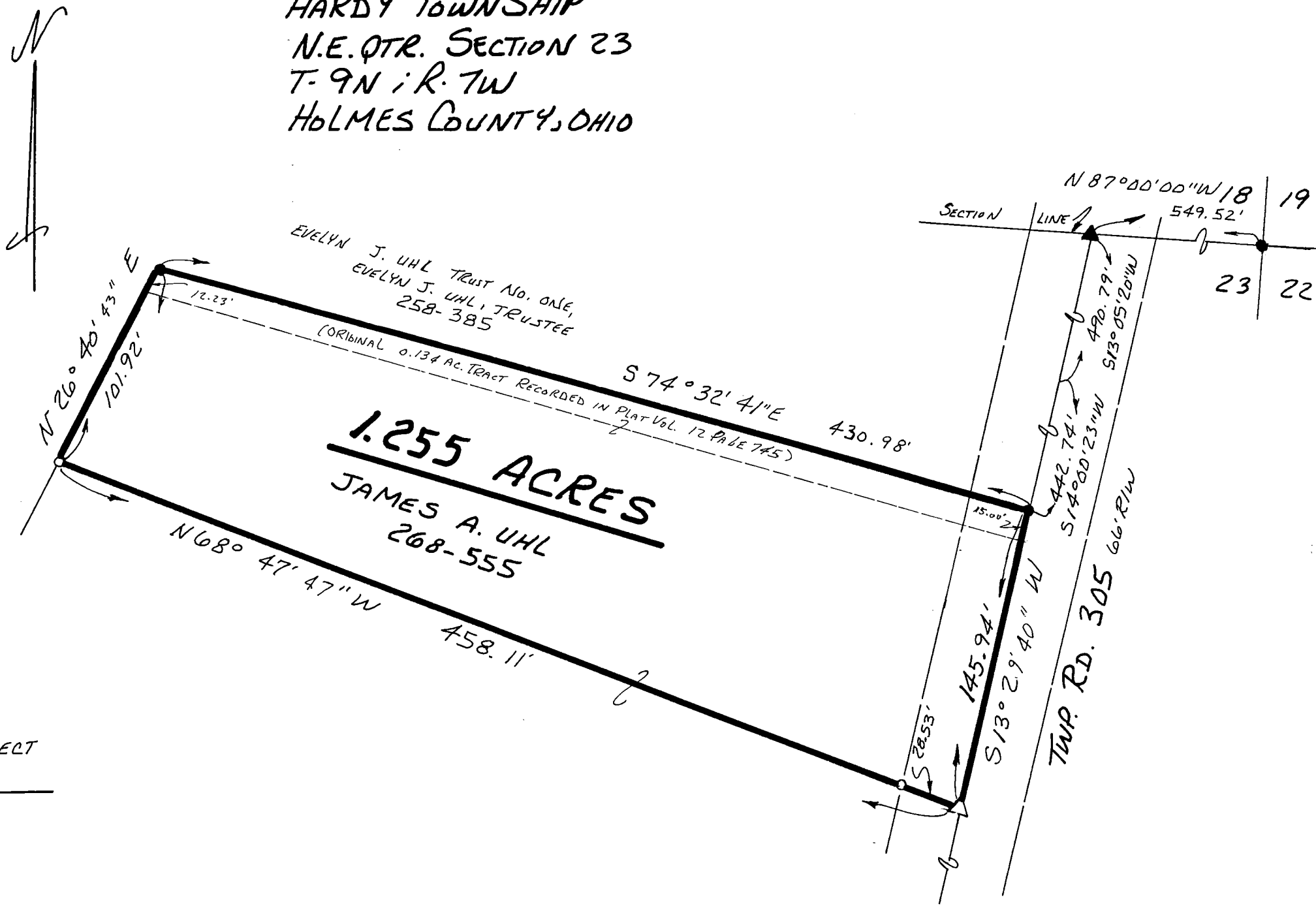
REFERENCES:

DEED VOL. 268 PAGE 555  
 " " 258 " 385  
 " " 244 " 273  
 " " 249 " 410

PLAT VOL. 12 PAGE 745  
 " " 2 PAGE 196  
 " " 6 " 2

BEARINGS FROM PLAT VOL. 2 PAGE 196.

HARDY TOWNSHIP  
 N.E. QTR. SECTION 23  
 T. 9N ; R. 7W  
 HOLMES COUNTY, OHIO



I CERTIFY THIS SURVEY TO BE CORRECT TO THE BEST OF MY KNOWLEDGE.

*Donald C. Baker*

DONALD C. BAKER P.S. 6938  
 5958 T.R. 322  
 MILLERSBURG, OHIO 44654  
 PH. (216) 674-4788  
 SEPTEMBER 25, 1995  
 51995-MLS