

Point "B" is S 87° 14' 5" E 412.5', North 36° 24' 33" E 1,611.41' from the S.W. corner of S.E. 1/4, Sec. 11, T 9 N, R 7 W, of Hardy Twp., Hol. Co., Ohio.

"B" N 36° 24' 33" E

Known as part of the S.E. 1/4 of Sec. 11, T 9 N, R 7 W, of Hardy Twp., Hol. Co., Ohio and as part of Vol. 233 Pg. 704

Beginning at the S.W. corner of the S.E. 1/4 of Sec. 11; thence South 87° 14' 5" East 412.5'; thence North 36° 24' 33" East 1,611.41'; thence South 53° 35' 27" East 250.00' to the S.E. corner of Lot 6 of Hilltop Acres (P.B. 2 Pg. 133) and the true point of beginning;

thence North 36° 24' 33" East 200.00' to the N.E. corner of Lot 6;

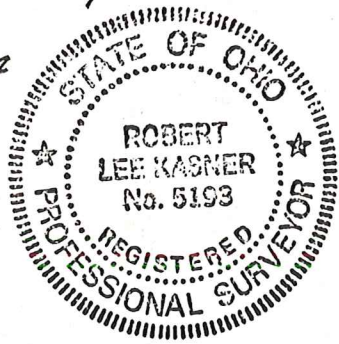
thence South 53° 35' 27" East 30.00' to the center of T.R. 317;

thence with the center of T.R. 317 South 36° 24' 33" West 200.00';

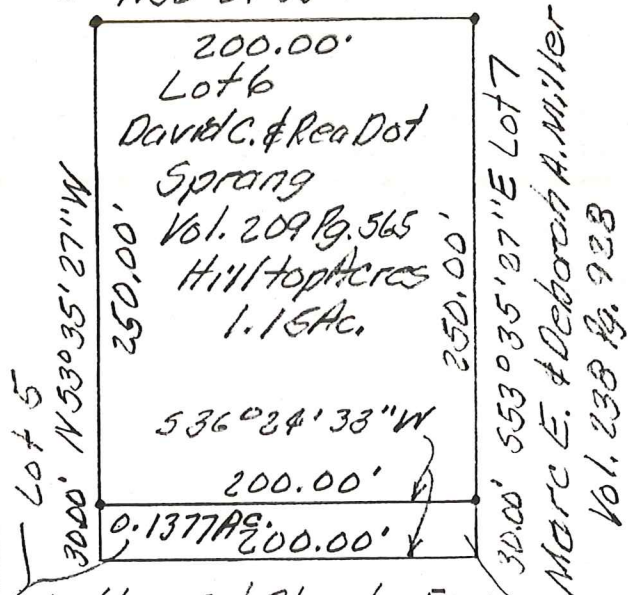
thence North 53° 35' 27" West 30.00' to the point of beginning and containing 0.1377 acres, but subject to all legal highways.

Survey and description by Robert L. Kasner

Known as part of S.E. 1/4 Sec. 11, T 9 N, R 7 W of Hardy Twp., Hol. Co., Ohio.



P.S. 5193
P.E. 28820
7/16/95



Sheldon D. & Blanche E. Schmucker
Vol. 233 Pg. 704
P.B. 8 Pg. 21

T.R. 317
60' R.W.



0 100 200 300

GRAPHIC SCALE IN FEET

• Denotes 5/8" x 30" iron pins set when Hilltop Acres was laid out, 1969.