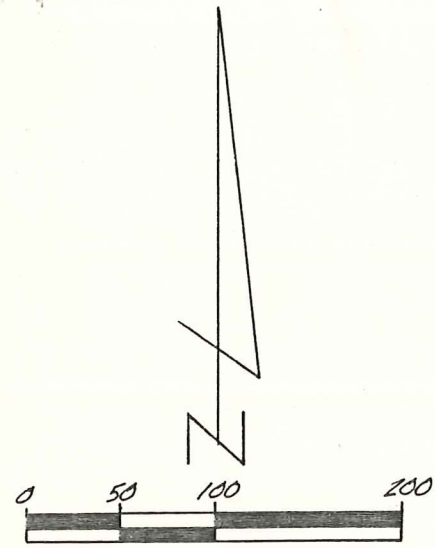
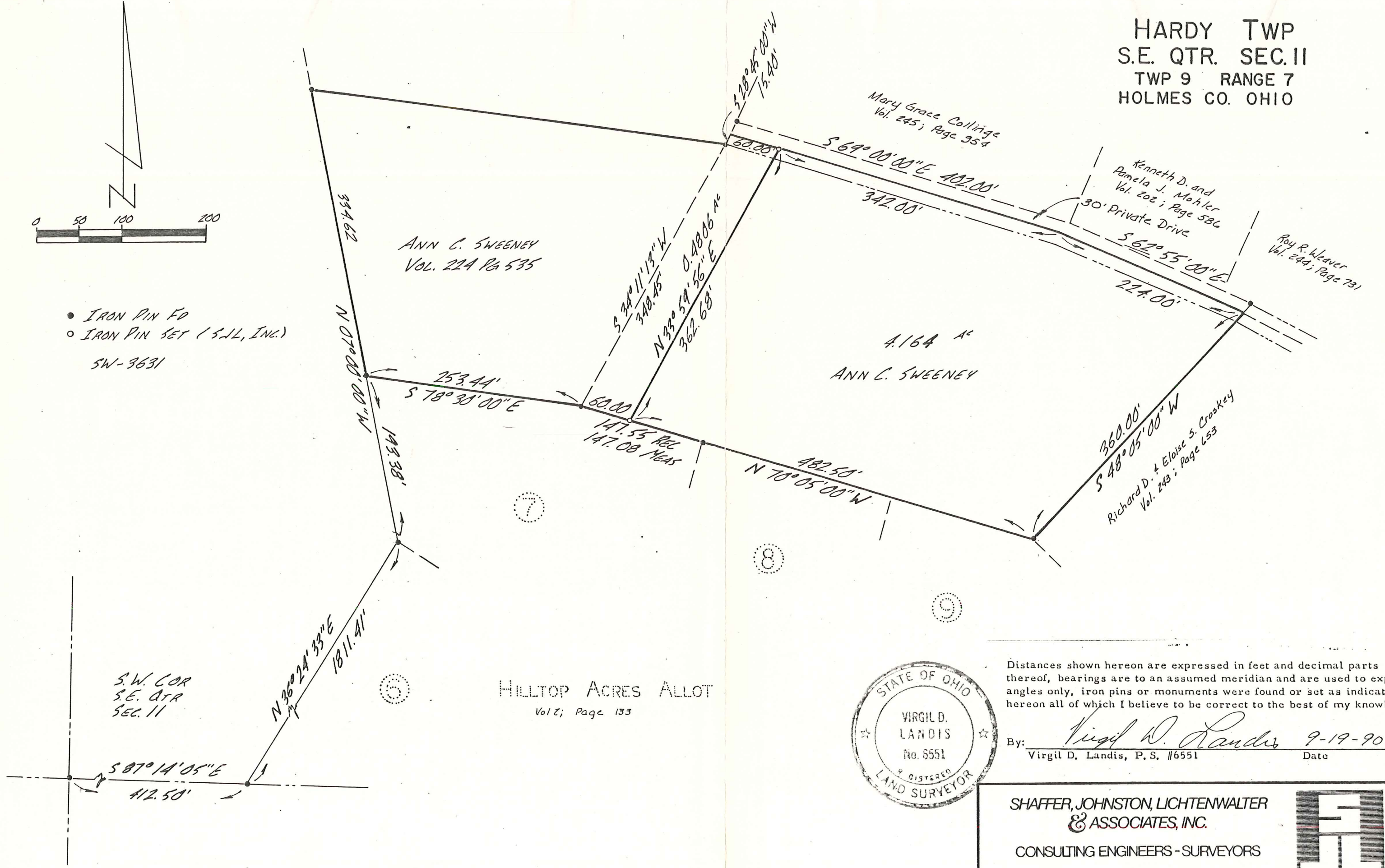


HARDY TWP
 S.E. QTR. SEC. II
 TWP 9 RANGE 7
 HOLMES CO. OHIO



- IRON PIN FD
 - IRON PIN SET (S.L.L., INC.)
- 5W-3631



4.164 AC
 ANN C. SWEENEY

HILLTOP ACRES ALLOT
 Vol 2; Page 133



Distances shown hereon are expressed in feet and decimal parts thereof, bearings are to an assumed meridian and are used to express angles only, iron pins or monuments were found or set as indicated hereon all of which I believe to be correct to the best of my knowledge.

By: Virgil D. Landis 9-19-90
 Virgil D. Landis, P. S. #6551 Date

SHAFFER, JOHNSTON, LICHTENWALTER
 & ASSOCIATES, INC.
 CONSULTING ENGINEERS - SURVEYORS
 MANSFIELD OHIO WOOSTER