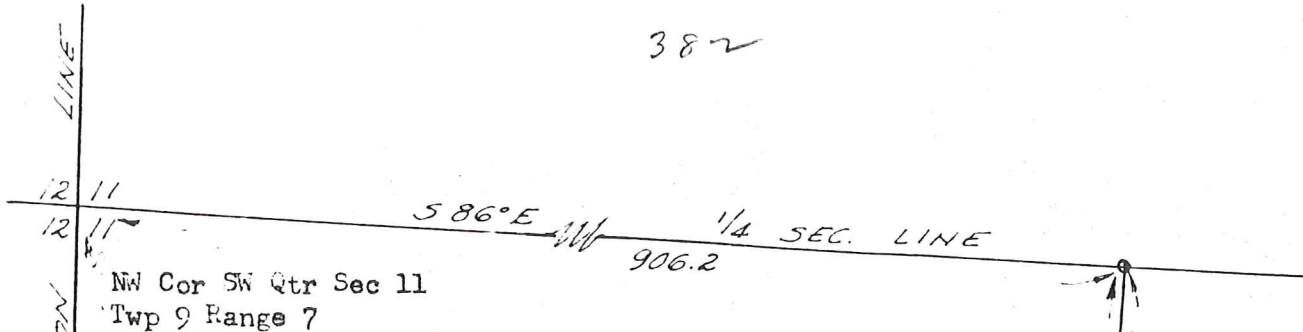


~~FILED~~
(P-0017)-11

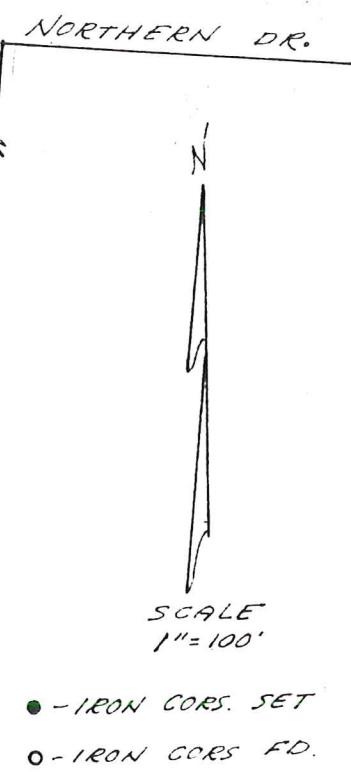
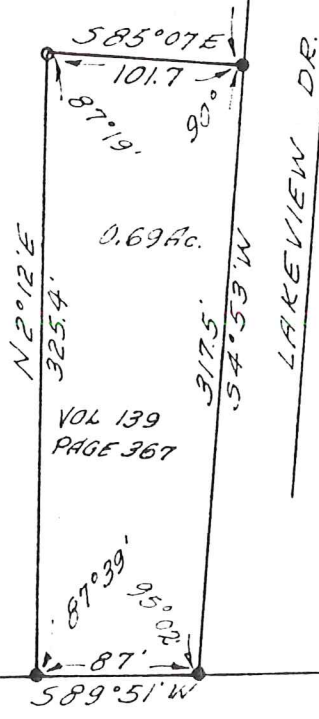
382



Reference is made to Lakeview Allotment Plat
recorded in Plat Book 2 Page 38

I certify this survey to be correct to the best
of my knowledge.
Completed October 1959

Ray W. Gasbarre
Ray W Gasbarre Reg Sur #4153
ENGINEERING ASSOCIATES
PO BOX 157
WOOSTER, OHIO



E F JACKSON ST.
PRIOR TO RELOCATION
U.S. PT 62