

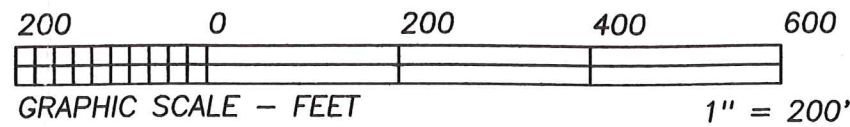
FEB 25 '08 PM 1:54

RECORDER'S USE ONLY

CURVE	RADIUS	TANGENT	LENGTH	DELTA	DEGREE	CHORD	CH.BEARING
A	95.64'	51.68'	94.77'	56°46'24"	59°54'29"	90.94'	N 24°52'41"W

NORTH

BEARINGS ESTABLISHED FROM PLAT 15/44 AND ARE TO DENOTE ANGULAR MEASUREMENT ONLY.



REFERENCE DOCUMENTS:  
TAX MAPS  
DEEDS AS SHOWN  
SURVEY PLATS: 14/726 & 15/44

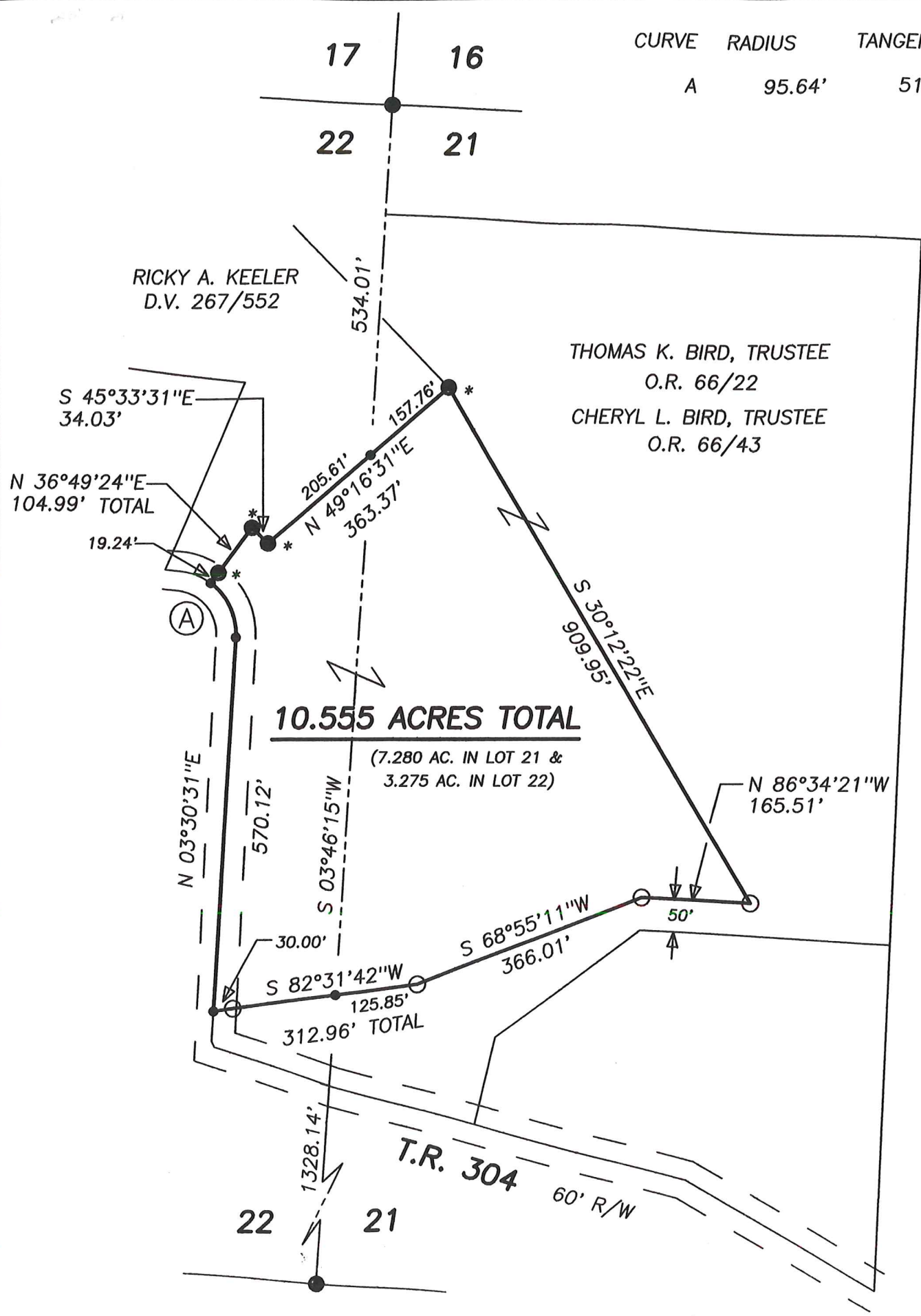
- LEGEND:
- = STONE FD.
  - = 5/8" RE-BAR FD. UNLESS NOTED
  - = POINT-OF-DEPARTURE
  - = 5/8" X 30" RE-BAR W/PLASTIC I.D. CAP SET
  - ⊗ = R/R SPIKE SET
  - △ = R/R SPIKE FD.
  - \* = CAPPED "SHAMP"

I CERTIFY THIS PLAT & SURVEY TO BE CORRECT TO THE BEST OF MY KNOWLEDGE:

PRELIMINARY FOR REVIEW ONLY

2/21/08

JIM SHAMP, REG. SUR. NO. S-6088      DATE



<b>HEARTLAND SURVEYING, INC</b>				
Jim Shamp				
5210 T.R. 257		MILLERSBURG, OH 44654		
PH: 330-674-4698		FAX: 330-674-0897		
SURVEY		THOMAS K. BIRD, TRUSTEE & CHERYL L. BIRD, TRUSTEE		STATE OHIO
COUNTY HOLMES	TWP. HARDY	RNG. 7 WEST	TWP. 9 NORTH	
3RD QUARTER LOTS 21 & 22			JOB NO.	941108 LAY 43