

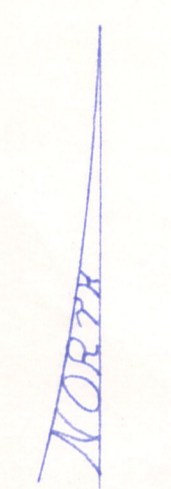
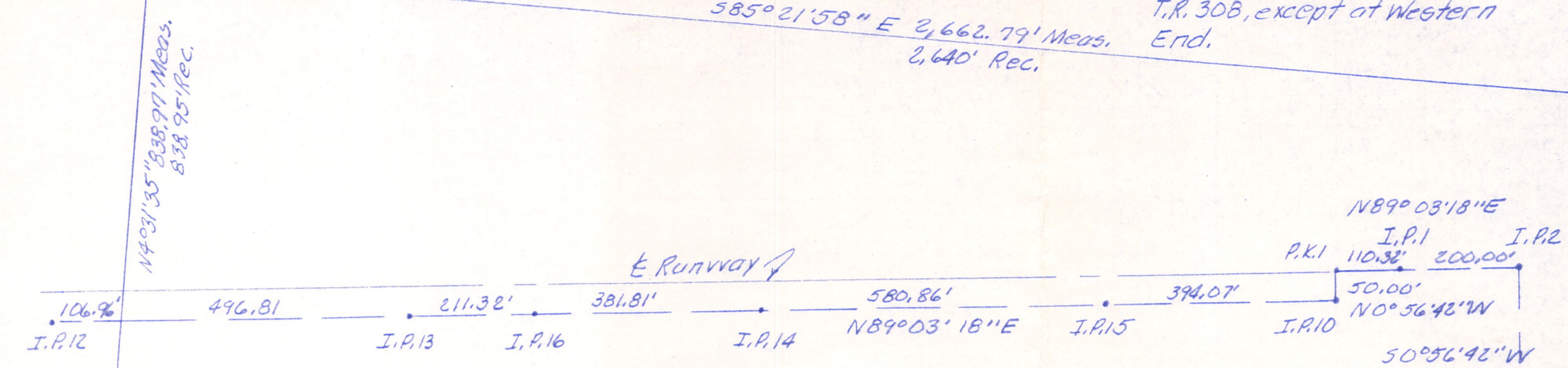
I. Pipe Fd at N.W. corner Lot 17, 3rd Qtr. T9N, R7W  
at intersection T.R. 307 & T.R. 308

Lot 12

Note: This line is not in  
T.R. 308, except at Western  
End.

585° 21' 58" E 2,662.79' Meas.  
2,640' Rec.

Ref. I. Pin Set N1° 01' 00" W  
54.11'  
N.E. corner Lot 17 I. Pin Set



Thomas K. Bird  
Vol. 256  
Pg. 729  
734

Vol. 236 Pg. 228 Tract 1 gives 126.40 Ac. - Exceptions  
Survey gives 129.6280 Ac.

Lot 16  
Thomas K. Bird  
Vol. 177 Pg. 594, 596

N 4° 31' 12" E 1,809.53' Meas.  
1,810.02' Rec.

981.53'  
2,120.50' Meas.  
2,085.6' Rec.

I. Pin Set (East side T.R. 307)

585° 21' 57" E 2,662.89'

Lease area 18,3395 Ac.

See Note:  
Note: From this point westward this line  
was marked. From this point Eastward  
slope is very steep and rocky.

I. Pin Set (West side T.R. 307)

N 85° 21' 57" W 2,662.89' Meas.  
2,640' Rec.

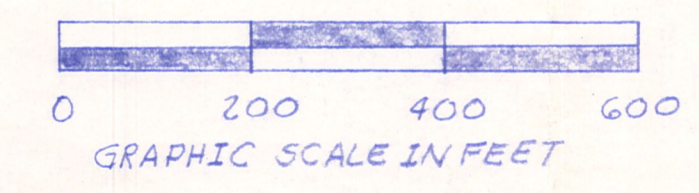
Irma A. Thompson  
Vol. 168 Pg. 163

Thomas K. Bird  
Vol. 211 Pg. 475

Tree with four fences  
going to it was used  
for corner. A search  
was made Southward  
for a lot corner, but  
no evidence was found.

Lot 18  
Lot 23

I. Pin Fd in center (somewhat bent)  
of T.R. 307 at S.W. corner Lot 17



PLAT OF A SURVEY FOR  
HOLMES COUNTY  
AIRPORT AUTHORITY  
Known as part of Lot 17, 3rd  
Qtr., T9N, R7W, of Hardy Twp.,  
Hol. Co., Ohio.

Robert L. Kasner P.S. 5193  
P.E. 28820  
4/3/94



Not For Transfer Purposes  
For information only