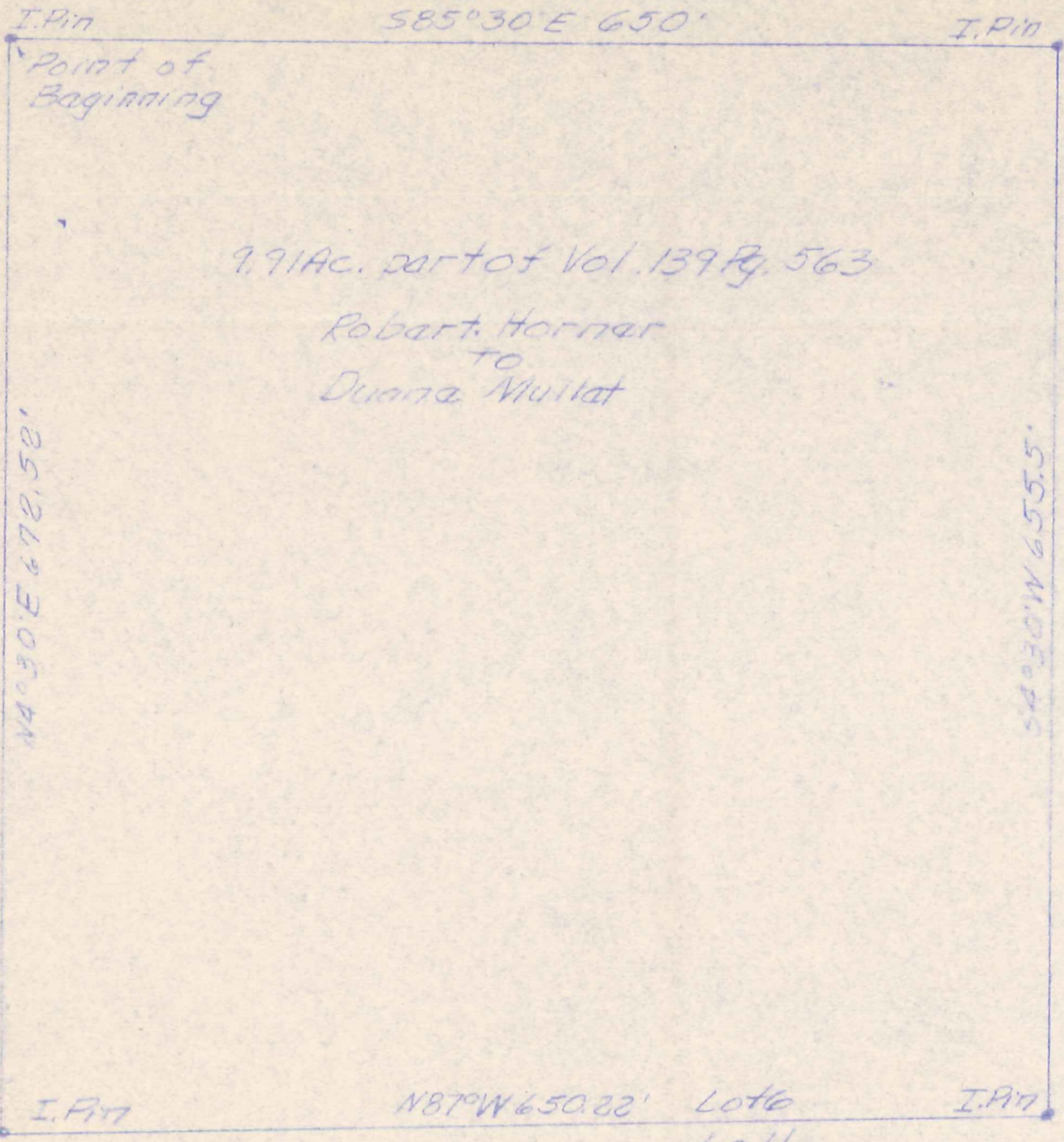


From stone at NW  
corn Lot 6, 3/4 T9N  
R7W to point of be-  
ginning S3°W 1078'  
N78°E 617' 55"  
S30°W 334' 50"  
W 264' 52°05' W  
111.4' and S4°30'  
W 594.6'



Duane Mullet  
S85°30'E 650'

Point of Beginning

9.91 Ac. part of Vol. 139 Pg. 563

Robert Horner  
to  
Duane Mullet

Lot 6, 3rd 1/4, T9N, R7W  
Hardy Township, Holmes  
County, State of Ohio.  
Robert L. Kasner F.S. 5193

Robert Horner



MAP OFFICE COPY

12/23/74