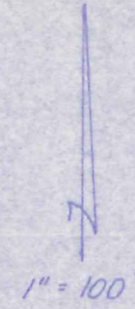
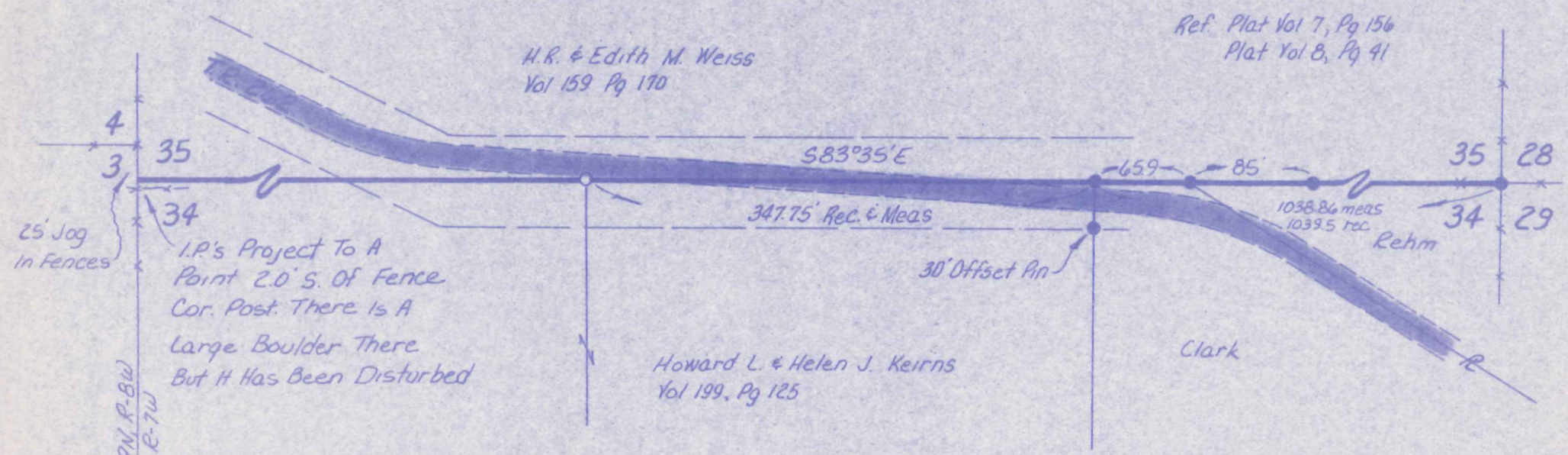


HARDY TOWNSHIP
 HOLMES COUNTY, OHIO
 LOTS 34 & 35, 2ND QTR. T-9N, R-7W

A Survey To Determine The Line Between Lots 34 & 35
 Surveyed For Howard Keirns



- I.P. Fd
- I.P. Set 5/8 Rebar w/Cap Marked "LONG-6505"



Monroe Twp. 1st Qtr. T-9N, R-8W
 Hardy Twp. 2nd Qtr. T-9N, R-7W

I Certify This Plat To Be Correct To The
 Best Of My Knowledge
William H Long Feb 14, 1984
 William H Long R.S. 6505
 13301 T.R. 503
 Big Prairie, Ohio 44611

MAP OFFICE COPY