

SCALE: 1"=200'

- ▲ R.R. SPIKE FOUND
- 5/8" REBAR FOUND UNLESS OTHERWISE NOTED
- 5/8" REBAR SET WITH I.D. CAP I.D. CAP MARKED "BAKER 6938"

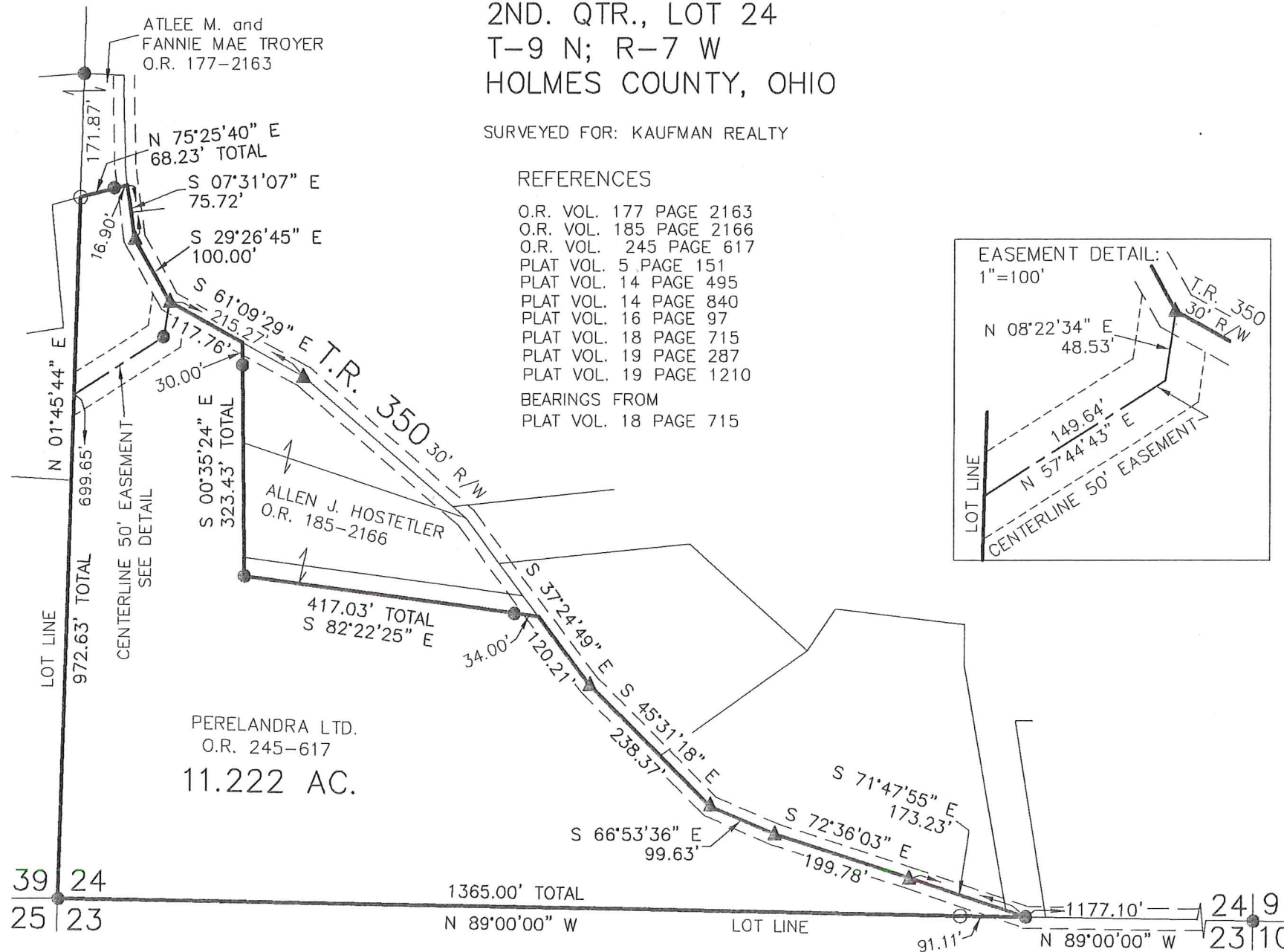
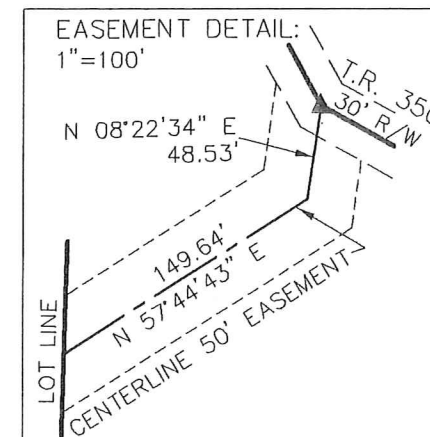


HARDY TOWNSHIP
2ND. QTR., LOT 24
T-9 N; R-7 W
HOLMES COUNTY, OHIO

SURVEYED FOR: KAUFMAN REALTY

REFERENCES

- O.R. VOL. 177 PAGE 2163
- O.R. VOL. 185 PAGE 2166
- O.R. VOL. 245 PAGE 617
- PLAT VOL. 5 PAGE 151
- PLAT VOL. 14 PAGE 495
- PLAT VOL. 14 PAGE 840
- PLAT VOL. 16 PAGE 97
- PLAT VOL. 18 PAGE 715
- PLAT VOL. 19 PAGE 287
- PLAT VOL. 19 PAGE 1210
- BEARINGS FROM PLAT VOL. 18 PAGE 715



PRELIMINARY FOR REVIEW ONLY

I CERTIFY THIS SURVEY TO BE CORRECT TO THE BEST OF MY KNOWLEDGE.

Donald C. Baker
DONALD C. BAKER P.S. 6938
DATE: DEC 19, 2013
JOB NO. 13-001
FILE NAME: WORK4\S-581A13

DONALD C. BAKER SURVEYING
138 N. CLAY STREET
MILLERSBURG, OHIO 44654
PH. 330-674-4788
FAX 330-674-6027

39 24
25 23

1365.00' TOTAL
N 89°00'00" W

LOT LINE

1177.10'
N 89°00'00" W

24 9
23 10