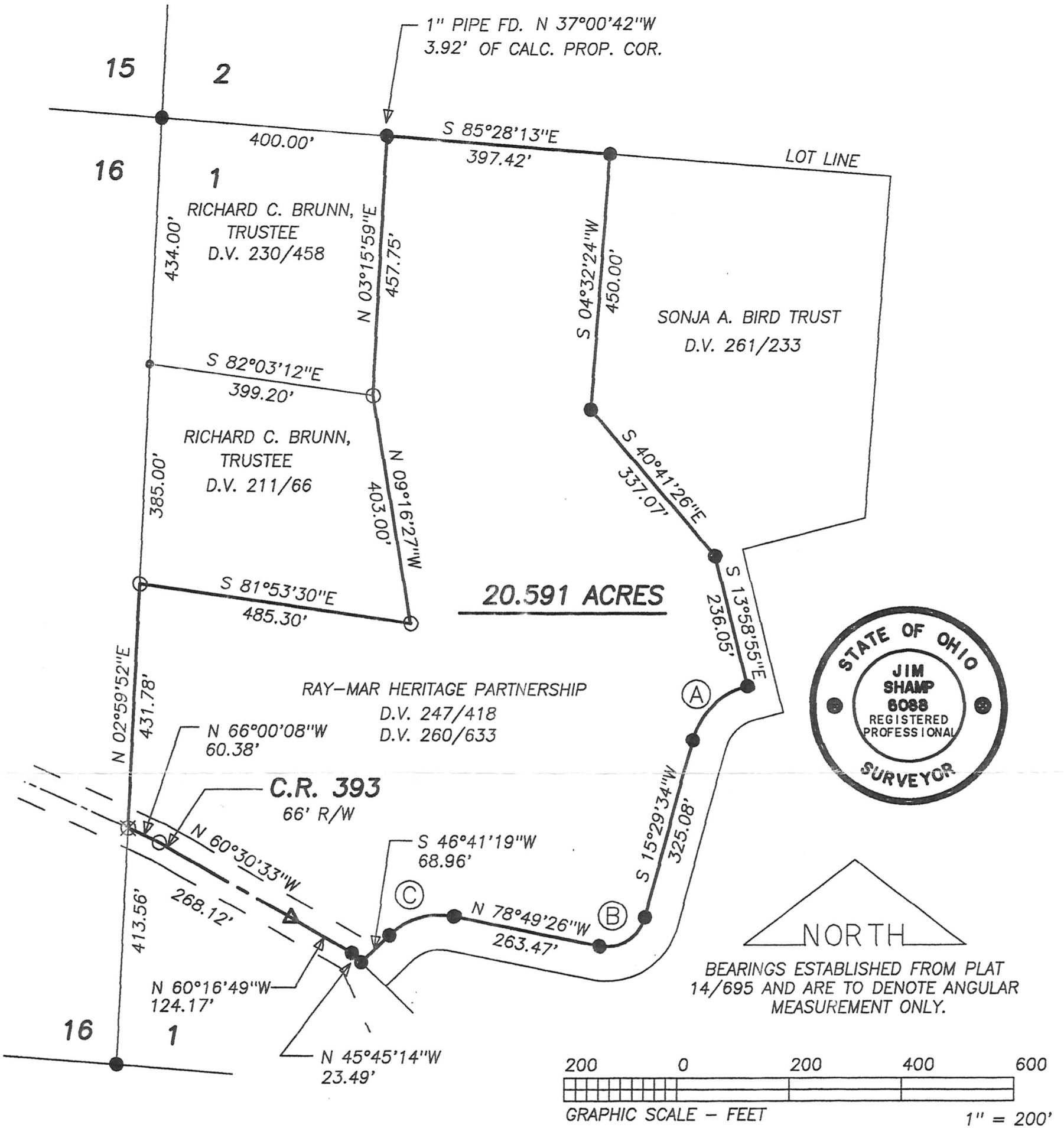


CURVE	RADIUS	TANGENT	LENGTH	DELTA	DEGREE	CHORD	CH.BEARING
A	135.00'	78.74'	142.56'	60°30'12"	42°26'29"	136.03'	S 45°44'40"W
B	70.00'	64.92'	104.69'	85°41'14"	81°51'04"	95.20'	S 58°19'57"W
C	130.00'	66.94'	123.63'	54°29'19"	44°04'25"	119.02'	S 73°55'55"W



I CERTIFY THIS PLAT & SURVEY TO BE CORRECT TO THE BEST OF MY KNOWLEDGE:

Jim Shamp

JANUARY 9, 2001

JIM SHAMP, REG. SUR. NO. S-6088 DATE

- LEGEND:
- = STONE FD.
 - = 5/8" RE-BAR FD. UNLESS NOTED
 - = POINT-OF-DEPARTURE
 - = 5/8" X 30" RE-BAR W/PLASTIC I.D. CAP SET
 - ⊗ = R/R SPIKE SET
 - △ = R/R SPIKE FD.

HEARTLAND SURVEYING, INC

Jim Shamp
5210 T.R. 257 MILLERSBURG, OH 44654
PH: 330-674-4698

REFERENCE DOCUMENTS:

TAX MAPS
DEEDS AS SHOWN
SURVEY PLATS: 2/270, 3/61B, 4/159
13/77, 14/695

A SURVEY FOR TERRI MORRISON
BY D. BAKER - 11/22/2000

SURVEY RAY-MAR HERITAGE PARTNERSHIP			STATE OHIO	
COUNTY HOLMES	TWP. HARDY	RNG. 7 W	TWP. 9 N	
2ND QUARTER LOT 1			001115	