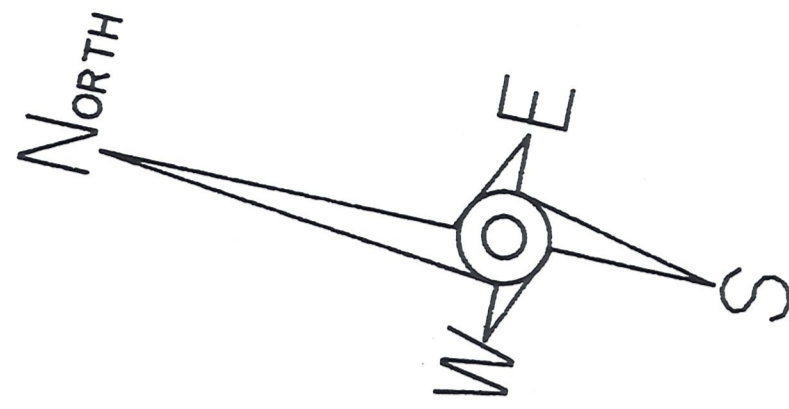
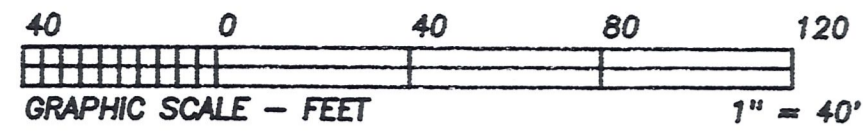


CURVE	RADIUS	TANGENT	LENGTH	DELTA	DEGREE	CHORD	CH. BEARING
A	193.01'	127.87'	225.88'	67°03'05"	29°41'07"	213.20'	S 24°27'02"W
B	133.01'	88.12'	155.66'	67°03'05"	43°04'34"	146.93'	N 24°27'02"E



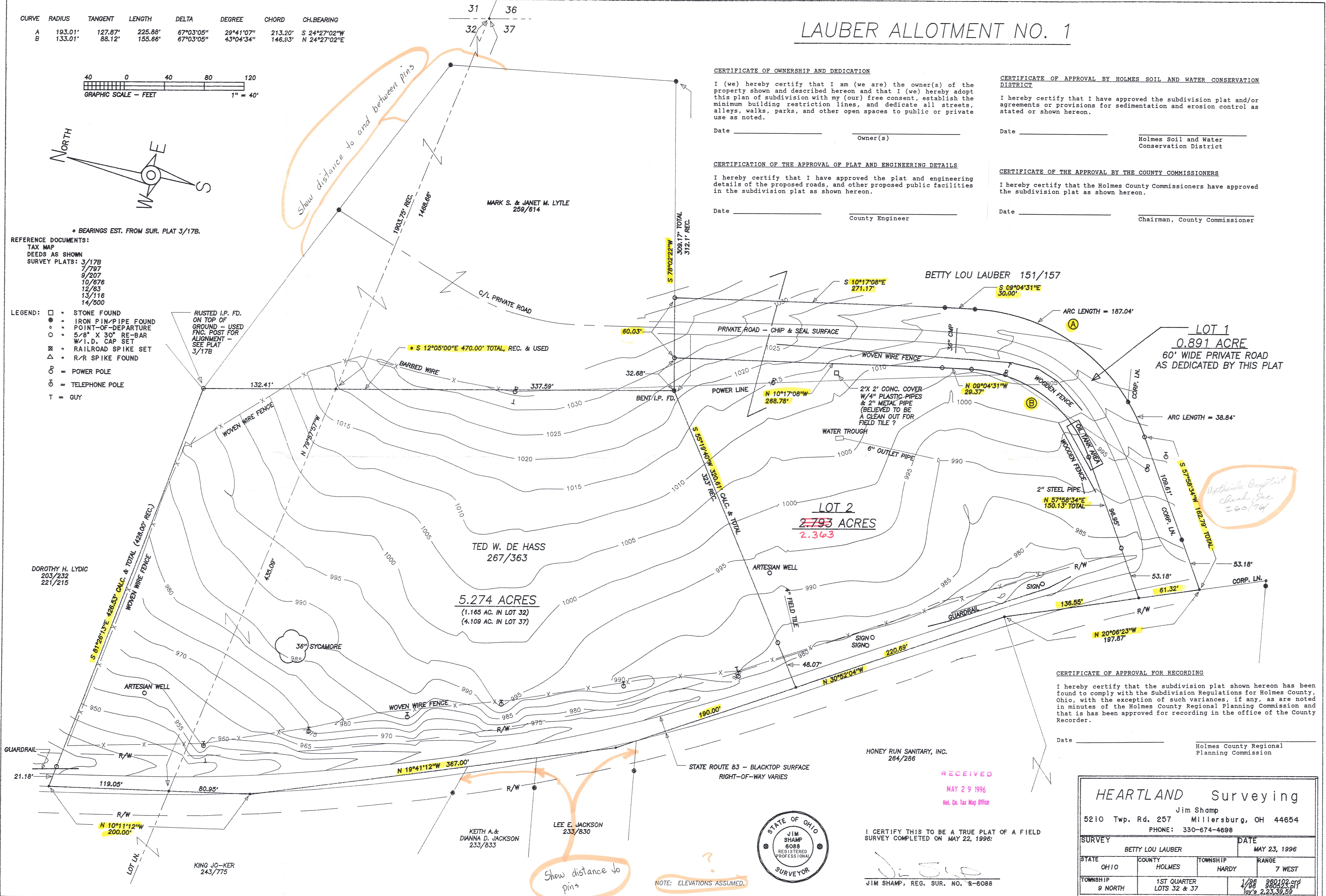
* BEARINGS EST. FROM SUR. PLAT 3/17B.

REFERENCE DOCUMENTS:

- TAX MAP
- DEEDS AS SHOWN
- SURVEY PLATS: 3/17B
- 7/797
- 9/207
- 10/876
- 12/63
- 13/116
- 14/500

- LEGEND:
- = STONE FOUND
 - = IRON PIN/PIPE FOUND
 - = POINT-OF-DEPARTURE
 - = 5/8" X 30" RE-BAR
 - ⊗ = W.I.D. CAP SET
 - ⊗ = RAILROAD SPIKE SET
 - △ = R/R SPIKE FOUND
 - ⊙ = POWER POLE
 - ⊙ = TELEPHONE POLE
 - T = GUY

RUSTED I.P. FD. ON TOP OF GROUND - USED FNG. POST FOR ALIGNMENT - SEE PLAT 3/17B



LAUBER ALLOTMENT NO. 1

CERTIFICATE OF OWNERSHIP AND DEDICATION

I (we) hereby certify that I am (we are) the owner(s) of the property shown and described hereon and that I (we) hereby adopt this plan of subdivision with my (our) free consent, establish the minimum building restriction lines, and dedicate all streets, alleys, walks, parks, and other open spaces to public or private use as noted.

Date _____ Owner(s) _____

CERTIFICATE OF APPROVAL BY HOLMES SOIL AND WATER CONSERVATION DISTRICT

I hereby certify that I have approved the subdivision plat and/or agreements or provisions for sedimentation and erosion control as stated or shown hereon.

Date _____ Holmes Soil and Water Conservation District

CERTIFICATION OF THE APPROVAL OF PLAT AND ENGINEERING DETAILS

I hereby certify that I have approved the plat and engineering details of the proposed roads, and other proposed public facilities in the subdivision plat as shown hereon.

Date _____ County Engineer _____

CERTIFICATE OF THE APPROVAL BY THE COUNTY COMMISSIONERS

I hereby certify that the Holmes County Commissioners have approved the subdivision plat as shown hereon.

Date _____ Chairman, County Commissioner _____

BETTY LOU LAUBER 151/157

LOT 1
0.891 ACRE
60' WIDE PRIVATE ROAD
AS DEDICATED BY THIS PLAT

LOT 2
2.793 ACRES
2.363

TED W. DE HASS
267/363

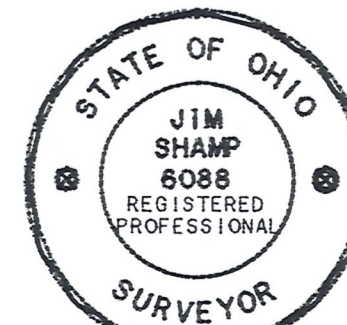
5.274 ACRES
(1.165 AC. IN LOT 32)
(4.109 AC. IN LOT 37)

DOROTHY H. LYDIC
203/232
221/215

KING JO-KER
243/775

KEITH A. & DIANNA D. JACKSON
233/833

LEE E. JACKSON
233/830



HONEY RUN SANITARY, INC.
284/286

RECEIVED
MAY 29 1996
Hol. Co. Tax Map Office

I CERTIFY THIS TO BE A TRUE PLAT OF A FIELD SURVEY COMPLETED ON MAY 22, 1996:

JIM SHAMP, REG. SUR. NO. S-8088

CERTIFICATE OF APPROVAL FOR RECORDING

I hereby certify that the subdivision plat shown hereon has been found to comply with the Subdivision Regulations for Holmes County, Ohio, with the exception of such variances, if any, as are noted in minutes of the Holmes County Regional Planning Commission and that it has been approved for recording in the office of the County Recorder.

Date _____ Holmes County Regional Planning Commission

HEARTLAND Surveying			
Jim Shamp			
5210 Twp. Rd. 257 Millersburg, OH 44654			
PHONE: 330-674-4698			
SURVEY	BETTY LOU LAUBER		DATE
			MAY 23, 1996
STATE	COUNTY	TOWNSHIP	RANGE
OHIO	HOLMES	HARDY	7 WEST
TOWNSHIP	1ST QUARTER		1/98 980102.crd
9 NORTH	LOTS 32 & 37		4/98 980523.plt
			10/98 980523.plt