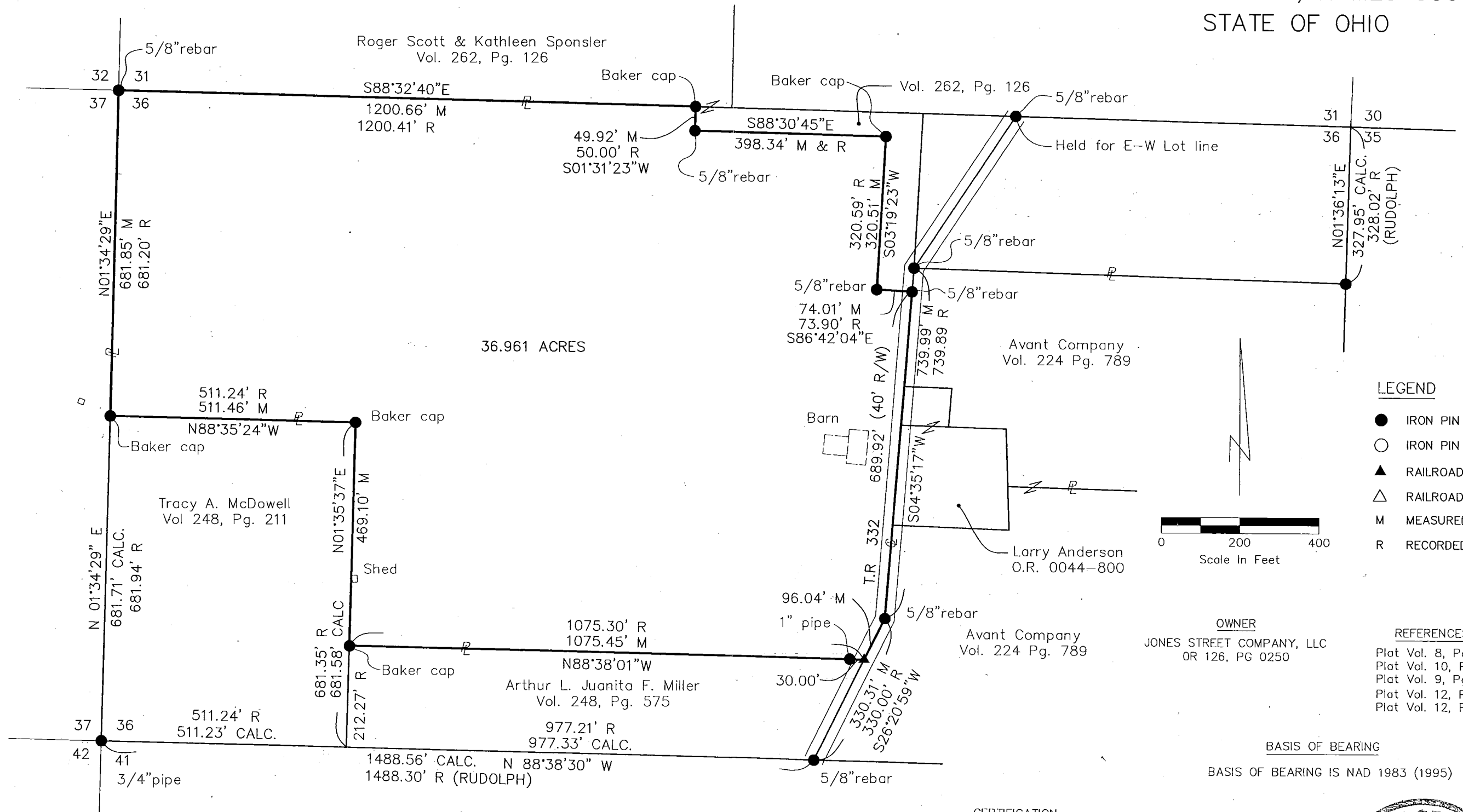
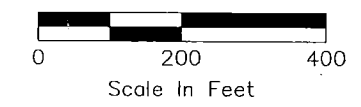


SURVEY OF 36.961 ACRE PARCEL
 LOCATED IN LOT 36, T-9,R-7, 1ST QUARTER
 HARDY TOWNSHIP, HOMES COUNTY
 STATE OF OHIO



LEGEND

- IRON PIN FOUND
- IRON PIN SET
- ▲ RAILROAD SPIKE FOUND
- △ RAILROAD SPIKE SET
- M MEASURED
- R RECORDED



REFERENCES

- Plat Vol. 8, Pg. 850
- Plat Vol. 10, Pg. 939
- Plat Vol. 9, Pg. 119
- Plat Vol. 12, Pg. 514
- Plat Vol. 12, Pg. 494

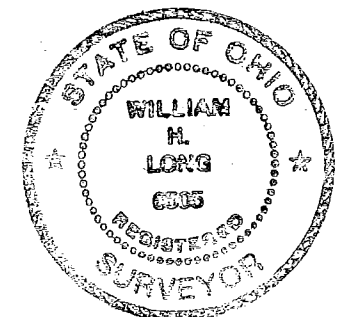
BASIS OF BEARING

BASIS OF BEARING IS NAD 1983 (1995)

CERTIFICATION

I, WILLIAM H. LONG, P.S. 6505, CERTIFY THAT THIS PLAT IS TRUE AND CORRECT TO THE BEST OF MY PROFESSIONAL KNOWLEDGE AND BELIEF, AND THAT THIS PLAT IS BASED ON A SURVEY MADE BY ME OR UNDER MY DIRECT SUPERVISION FOR ENGINEERING ASSOCIATES, INC. IN OCTOBER OF 2002.

William H. Long Nov 20, 2002
 WILLIAM H. LONG P.S. 6505 DATE



*For information purposes only
 Not intended for transfer
 William H. Long P.S.*