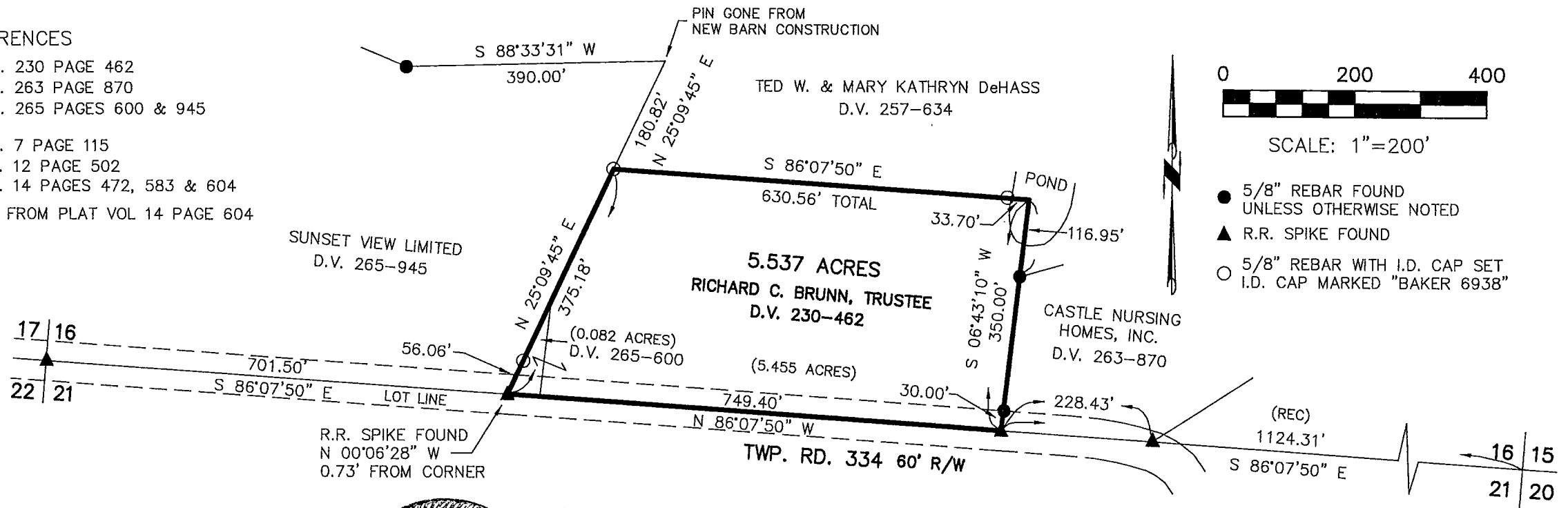


HARDY TOWNSHIP
 1ST. QTR., LOT 16
 T-9 N; R-7 W
 HOLMES COUNTY, OHIO

SURVEYED FOR: CASTLE NURSING HOMES, INC.

REFERENCES

- DEED VOL. 230 PAGE 462
- DEED VOL. 263 PAGE 870
- DEED VOL. 265 PAGES 600 & 945
- PLAT VOL. 7 PAGE 115
- PLAT VOL. 12 PAGE 502
- PLAT VOL. 14 PAGES 472, 583 & 604
- BEARINGS FROM PLAT VOL 14 PAGE 604



I CERTIFY THIS SURVEY TO BE CORRECT TO THE BEST OF MY KNOWLEDGE.

Donald C. Baker
 DONALD C. BAKER P.S. 6938
 DATE: MARCH 8, 2005



DONALD C. BAKER SURVEYING
 138 N. CLAY ST.
 MILLERSBURG, OHIO, 44654
 PH. 330-674-4788
 FAX. 330-674-6027