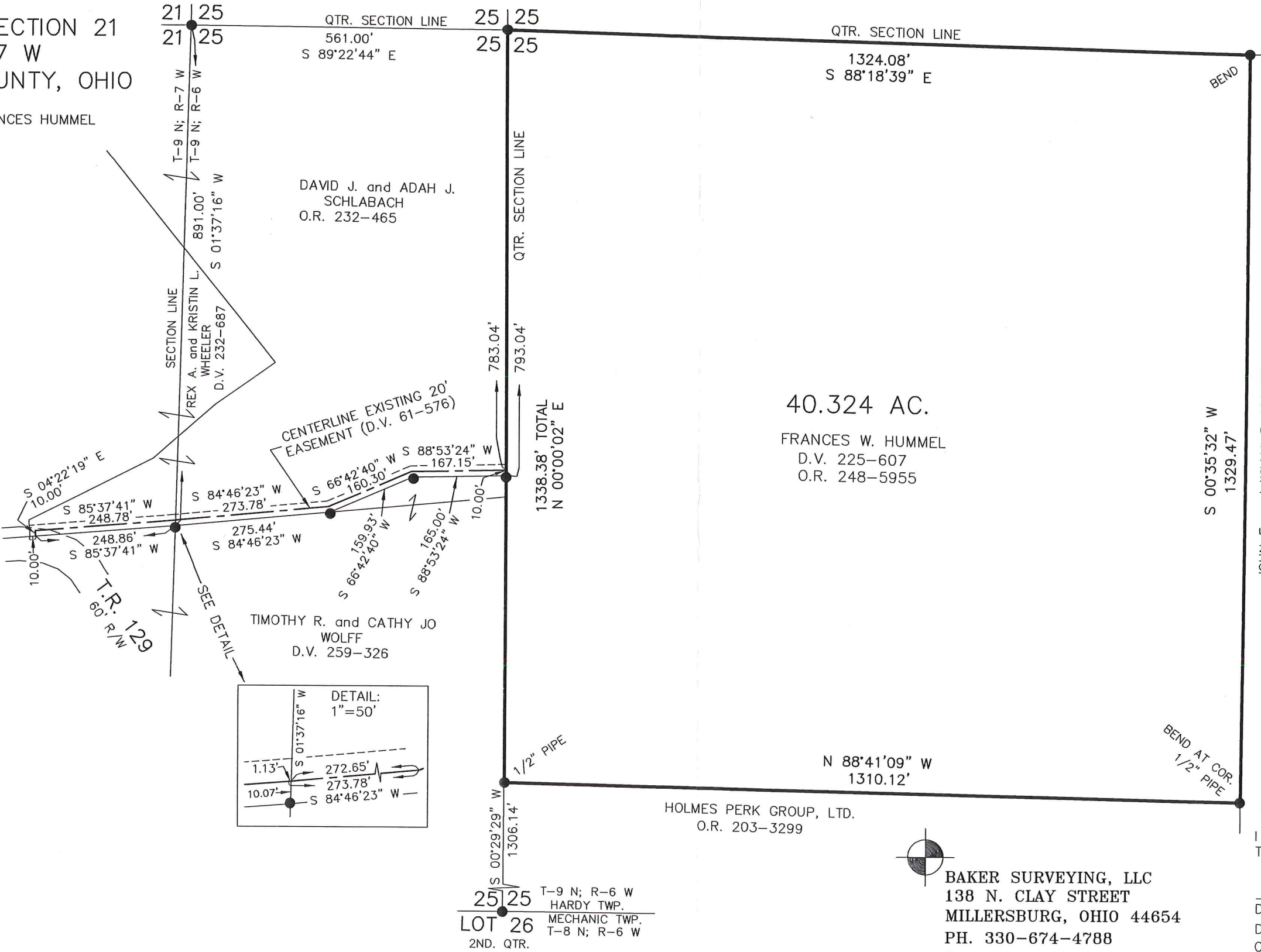


HARDY TOWNSHIP
S.W. & S.E. QTRS. SECTION 25
T-9 N; R-6 W

S.E. QTR. SECTION 21
T-9 N; R-7 W
HOLMES COUNTY, OHIO

SURVEYED FOR: FRANCES HUMMEL



SCALE: 1"=200'

- 5/8" REBAR FOUND UNLESS OTHERWISE NOTED
- 5/8" REBAR SET WITH I.D. CAP I.D. CAP MARKED "BAKER 6938"

REFERENCES

- DEED VOL. 61 PAGE 576
- DEED VOL. 173 PAGE 492
- DEED VOL. 259 PAGE 326
- O.R. VOL. 203 PAGE 3299
- O.R. VOL. 232 PAGE 465
- O.R. VOL. 248 PAGE 5955
- SURVEY RECORD 5 PAGE 293
- PLAT VOL. 19 PAGE 672
- PLAT VOL. 19 PAGE 2012
- BEARINGS FROM PLAT VOL. 19 PAGE 2012

JOHN F. and WILMA P. KNAPP
D.V. 173-492



I CERTIFY THIS SURVEY TO BE CORRECT TO THE BEST OF MY KNOWLEDGE.

DONALD C. BAKER P.S. 6938
DATE: MARCH 7, 2016
CJG\KES\JPD
FILE NAME: WORK4\S-31-16

BAKER SURVEYING, LLC
138 N. CLAY STREET
MILLERSBURG, OHIO 44654
PH. 330-674-4788
FAX 330-674-6027

FOR REVIEW ONLY