

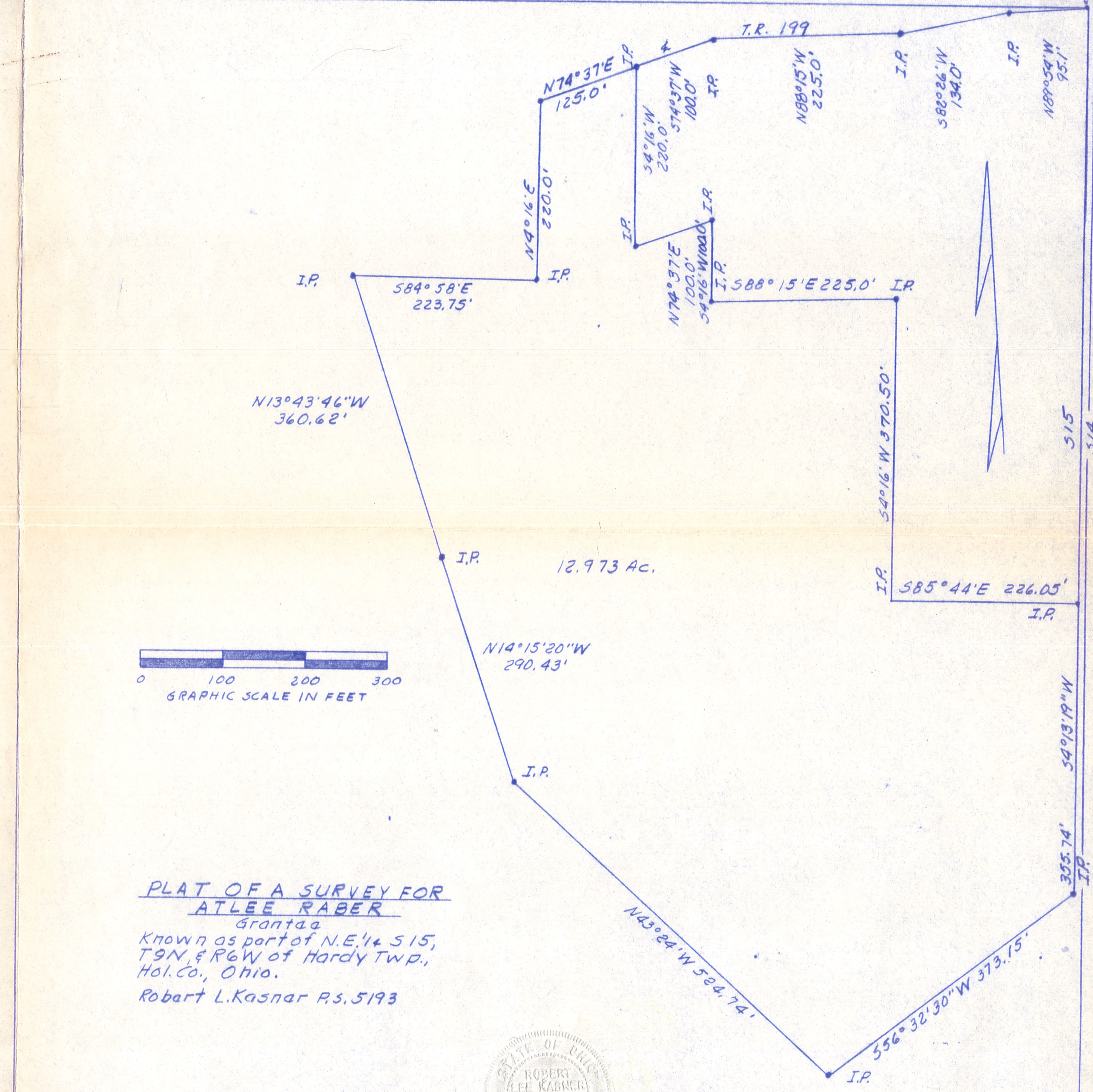
N.W. CORNER N.E. 1/4
S15, T9N, R6W

384° 53' E 1320.18'

56

NE. CORNER S15, T9N, R6W

I.P.



N13° 43' 46'' W
360.62'

I.P. 584° 58' E
223.75' I.P.

N74° 37' E
125.0' I.P.

N4° 16' E
220.0' I.P.

54° 16' W
220.0' I.P.

N74° 37' E
100.0' I.P.

54° 16' W
100.0' I.P.

T.R. 199

N88° 15' W
225.0' I.P.

582° 26' W
134.0' I.P.

N89° 54' W
95.1' I.P.

12.973 Ac.

N14° 15' 20'' W
290.43' I.P.

I.P.

N43° 24' W
524.74' I.P.

I.P.

556° 32' 30'' W
373.15' I.P.

355.74' I.P.

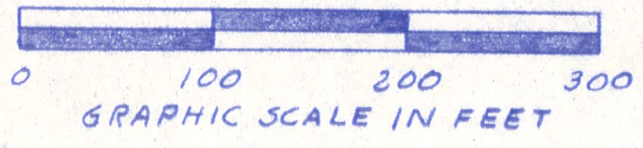
54° 13' 19'' W

I.P. 585° 44' E
226.05' I.P.

54° 16' W
370.50' I.P.

515

514



PLAT OF A SURVEY FOR
ATLEE RABER
 Grantaa
 Known as part of N.E. 1/4 S15,
 T9N, & R6W of Hardy Twp.,
 Hol. Co., Ohio.
 Robert L. Kasnar P.S. 5193



MAP OFFICE COPY

OK 9/11