

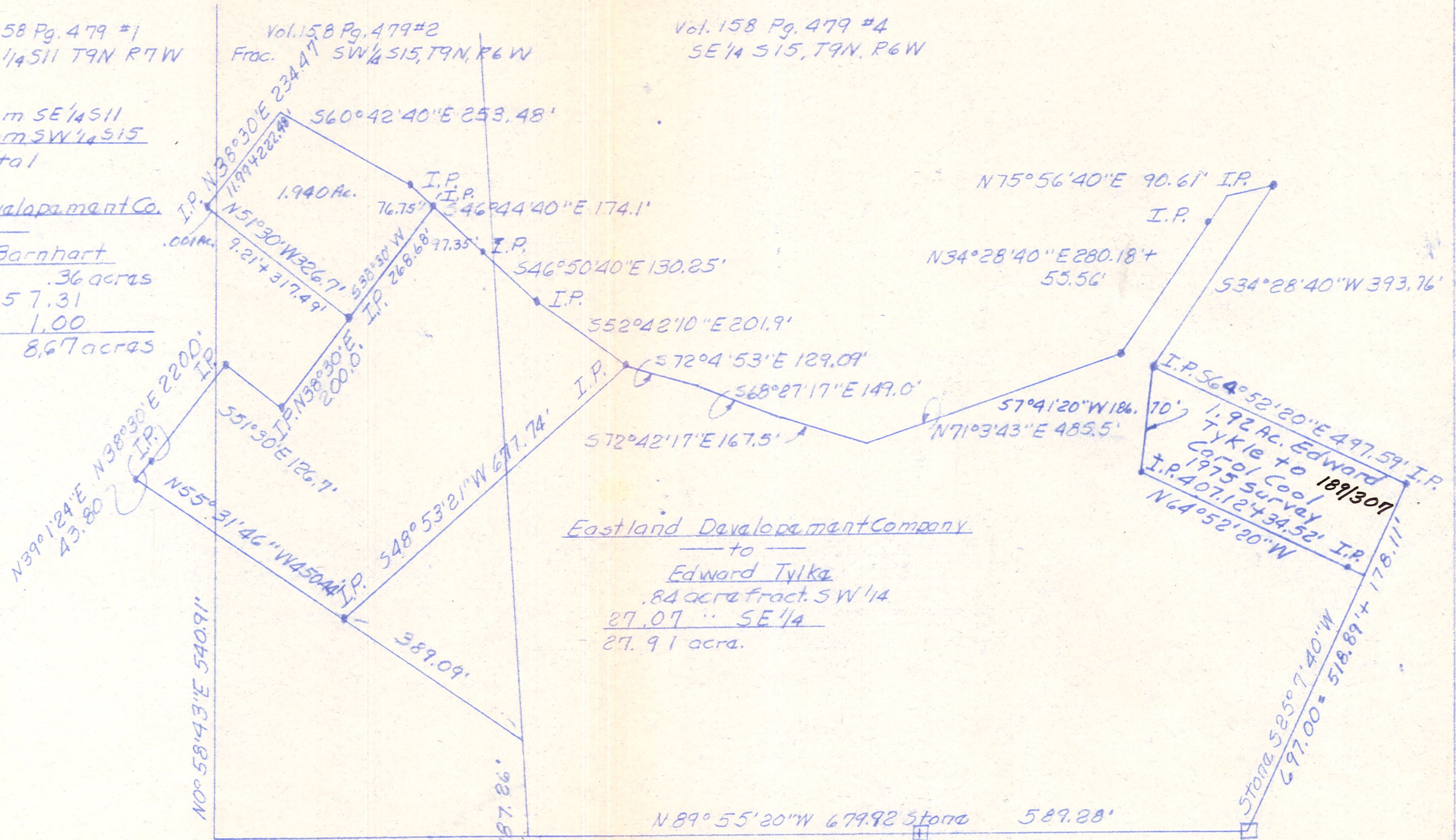
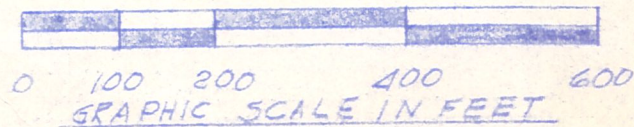
Vol. 158 Pg. 479 #1  
S.E. 1/4 S11 T9N R7W

Vol. 158 Pg. 479 #2  
Frac. SW 1/4 S15, T9N, R6W

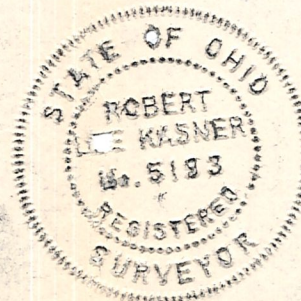
Vol. 158 Pg. 479 #4  
S.E. 1/4 S15, T9N, R6W

4/15/75  
0.001 Ac. from SE 1/4 S11  
1.941 " from SW 1/4 S15  
1.941 Ac. total

Eastland Development Co.  
— to —  
Charles Barnhart  
SE 1/4 S11 .36 acres  
frac SW 1/4 S15 7.31  
SE 1/4 S15 1.00  
11/3/74 8.67 acres



Eastland Development Company  
— to —  
Edward Tylka  
.84 acre fract. SW 1/4  
27.07 SE 1/4  
27.91 acra.



PLAT OF SURVEY IN  
S.E. 1/4 S11, T9N, R7W & Frac. SW 1/4 S15, T9N  
& R6W of Hardy Twp, Holmes Co., Ohio.  
Robert L. Kasner, P.S. 5193, P.E. 28820

11/3/74

MAP OFFICE COPY