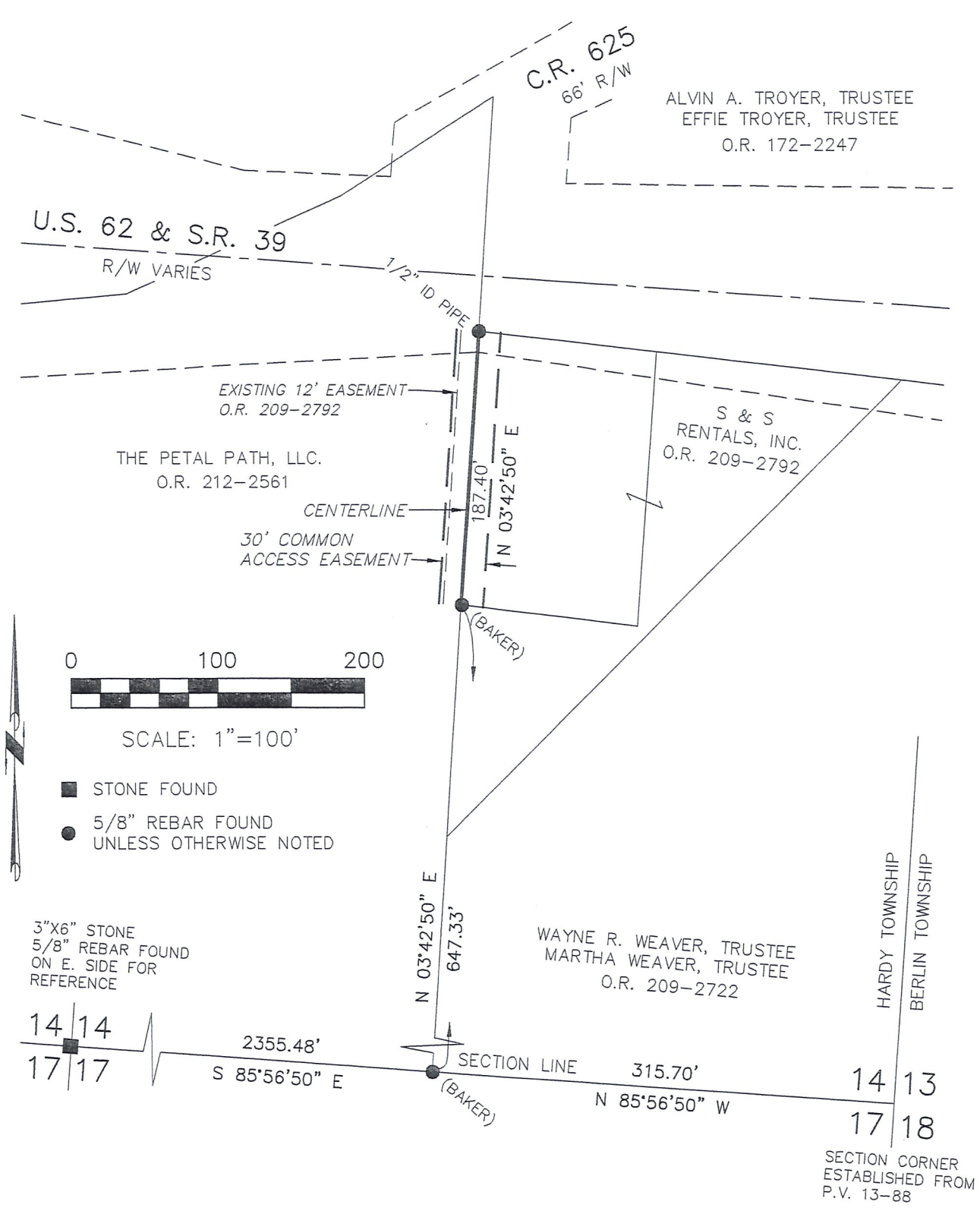


EASEMENT SURVEY
HARDY TOWNSHIP
S.E. QTR. SECTION 14
T-9 N; R-6 W
HOLMES COUNTY, OHIO

SURVEYED FOR: PHILIP SCHLABACH

REFERENCES

- O.R. VOL. 209 PAGES 2722 & 2792
- O.R. VOL. 212 PAGE 2561
- PLAT VOL. 13 PAGE 88
- PLAT VOL. 19 PAGE 1563
- BEARINGS FROM PLAT VOL. 19 PAGE 1563



I CERTIFY THIS SURVEY TO BE CORRECT TO THE BEST OF MY KNOWLEDGE.

PRELIMINARY FOR REVIEW ONLY

DONALD C. BAKER P.S. 6938
 DATE: SEPT. 1, 2009
 KES\ER2-ACB
 File Name: WORK2\S-185-09\ERZ
 INV: S-412-09



DONALD C. BAKER SURVEYING
 138 N. CLAY ST.
 MILLERSBURG, OHIO, 44654
 PH. 330-674-4788
 FAX. 330-674-6027