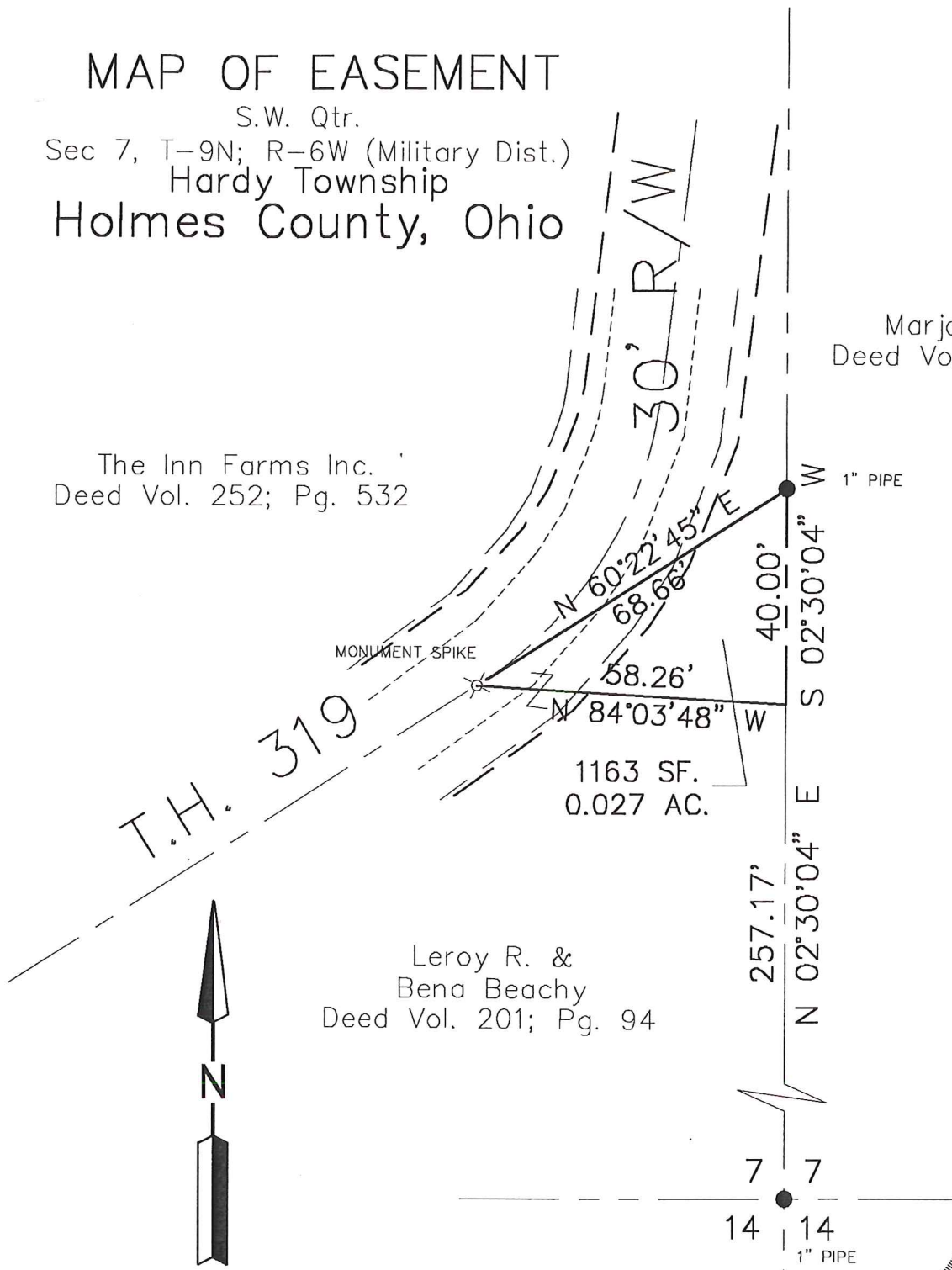


# MAP OF EASEMENT

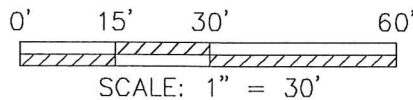
S.W. Qtr.  
 Sec 7, T-9N; R-6W (Military Dist.)  
 Hardy Township  
 Holmes County, Ohio

Marjorie H. Stock  
 Deed Vol. 219; Pg. 724

The Inn Farms Inc.  
 Deed Vol. 252; Pg. 532



Leroy R. &  
 Bena Beachy  
 Deed Vol. 201; Pg. 94



- 1" PIPE FOUND
- ⊗ MON. SPK. SET

Distances shown hereon are expressed in feet and decimal parts thereof, bearings are to an assumed meridian and are used to express angles only, iron pins or monuments were found or set as indicated hereon and are correct to the best of my knowledge, information and belief this;

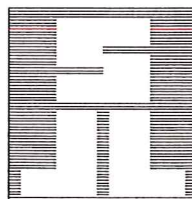


**SHAFFER, JOHNSTON, LICHTENWALTER  
 & ASSOCIATES, INC.**

CONSULTING ENGINEERS - SURVEYORS  
 2585 CLEVELAND ROAD, WOOSTER, OHIO 44691

PHONE (330) 345-6377 FAX (330) 345-6725

**1989EASE**



19<sup>TH</sup> day of October 19 99

*Virgil D. Landis*

Virgil D. Landis, P.S. #6551