

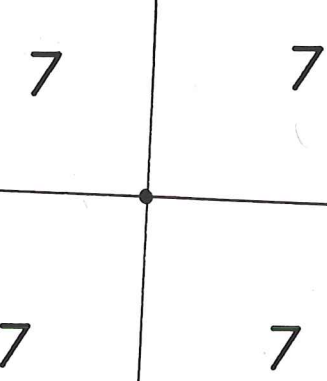
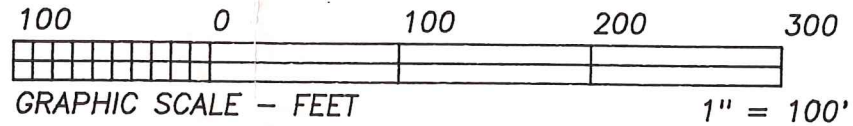
HEARTLAND Surveying, Inc.

Jim Shamp
 5210 T.R. 257 MILLERSBURG, OH 44654
 PH: 330-674-4698

SURVEY		STATE	
THE INN AT HONEY RUN, INC.		OHIO	
COUNTY	TWP.	RNG.	TWP.
HOLMES	HARDY	6 W	9 N
S.W. QUARTER SECTION 7		8/97 971229	



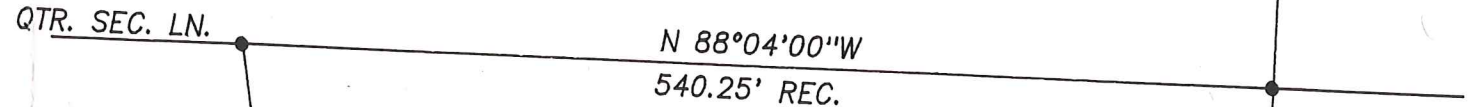
BEARINGS EST. FROM SUR. PLAT 10/319 AND ARE TO DENOTE ANGULAR MEASUREMENT ONLY.



I CERTIFY THIS PLAT & SURVEY TO BE CORRECT TO TO THE BEST OF MY KNOWLEDGE:

12/22/97

JIM SHAMP, REG. SUR. NO. S-6088 DATE

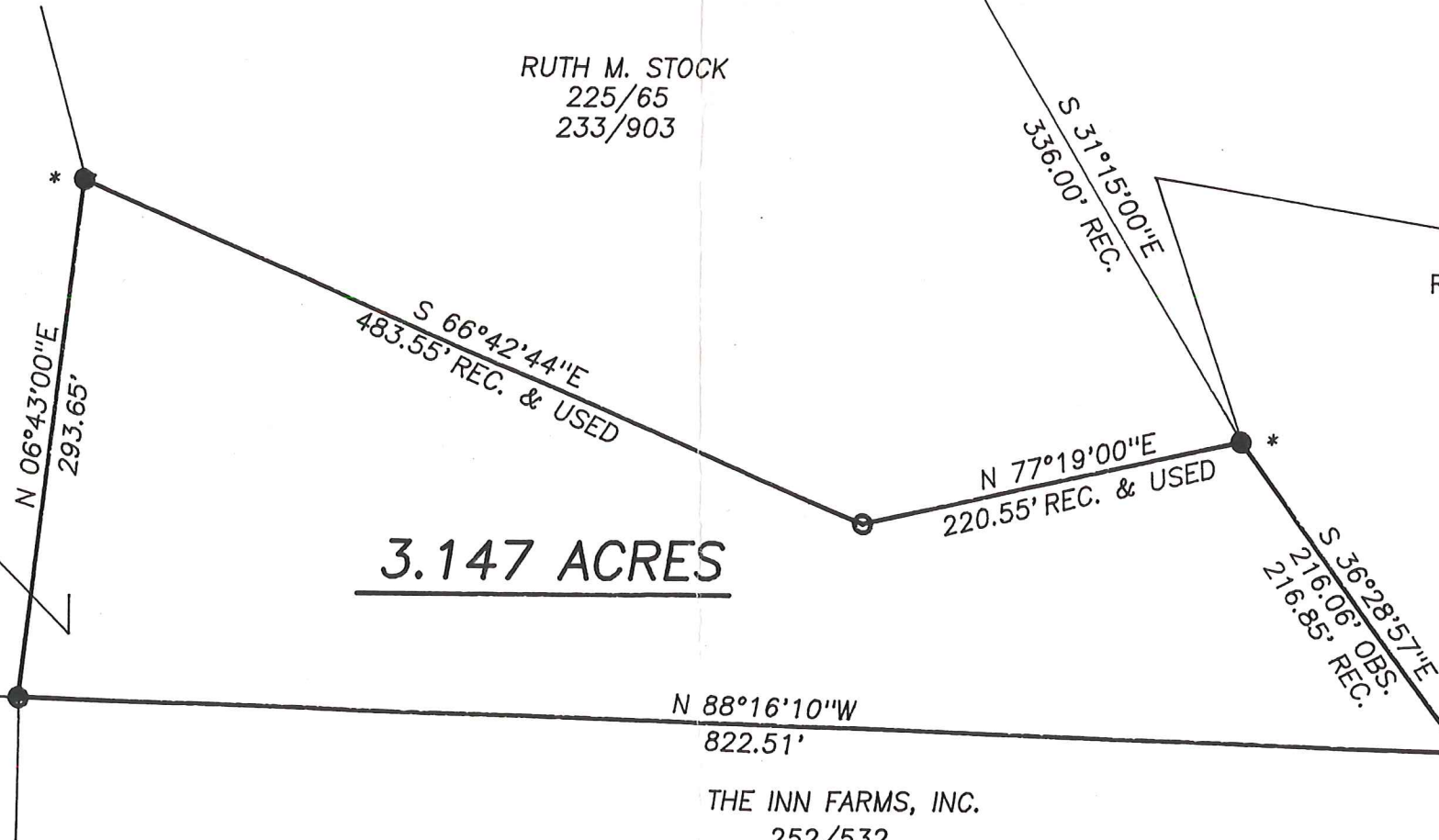


PAUL E. & LORETTA M. COLBLENTZ
 272/996

- LEGEND:
- = STONE FD.
 - = 5/8" RE-BAR FD. UNLESS NOTED
 - = POINT-OF-DEPARTURE
 - = 5/8" X 30" RE-BAR W/PLASTIC I.D. CAP SET
 - ⊗ = R/R SPIKE SET
 - △ = R/R SPIKE FD.
 - * = 1" PIPE FD.

RUTH M. STOCK
 225/65
 233/903

THE INN AT HONEY RUN, INC.
 233/917



REFERENCE DOCUMENTS:
 TAX MAPS
 DEEDS AS SHOWN
 SURVEY PLATS: 10/55, 10/319, 14/471

ANDREW D. & ESTHER STUTZMAN
 196/569
 225/444

THE INN AT HONEY RUN, INC.
 263/857

N 88°16'10"W
 822.51'

THE INN FARMS, INC.
 252/532