

HARDY TOWNSHIP
 S.W. QTR. SECTION 5
 T-9 N; R-6 W
 1ST. QTR., LOT 14
 T-9 N; R-7 W
 HOLMES COUNTY, OHIO

SURVEYED FOR: ADA SCHLABACH



Scale 1" = 200'

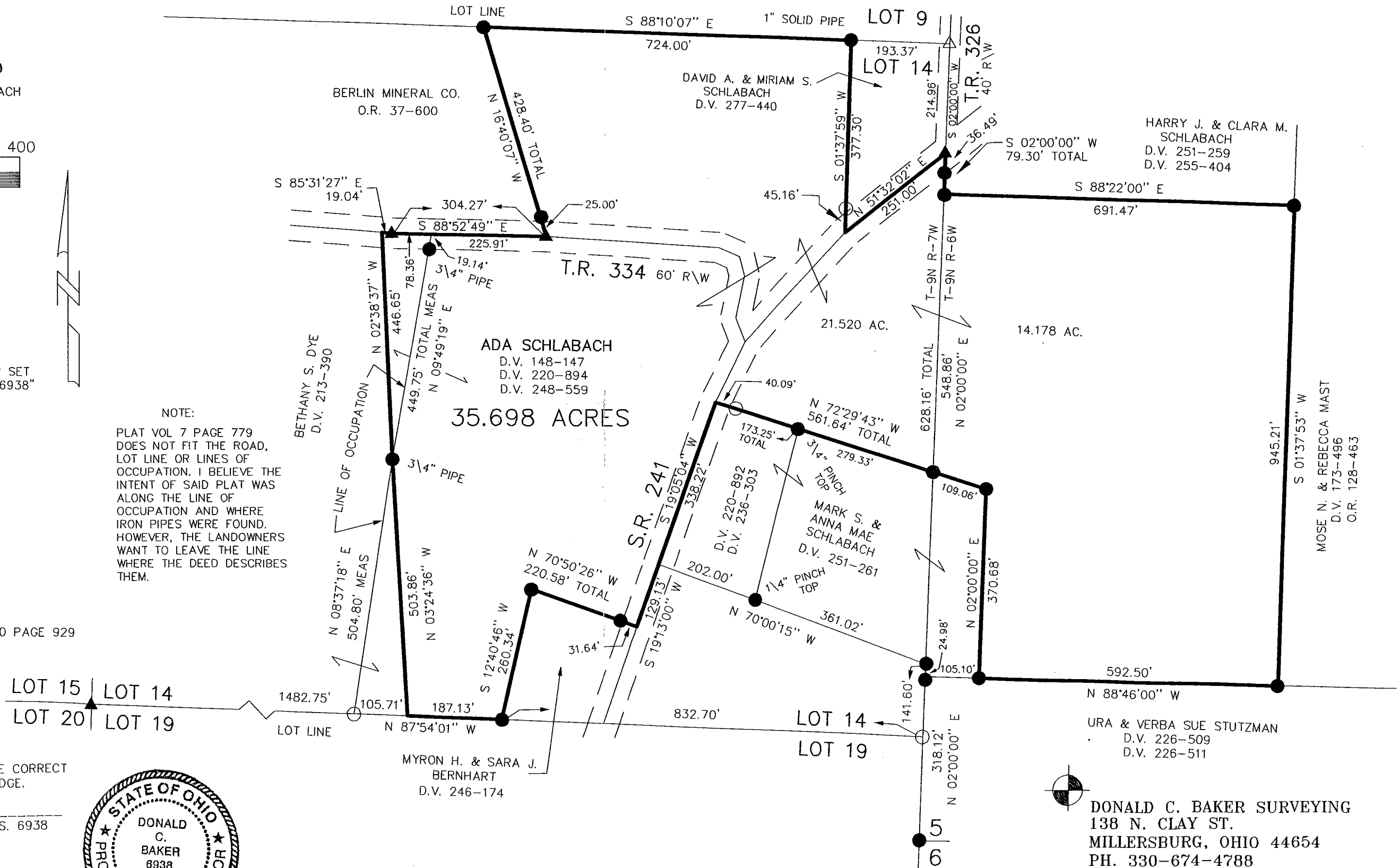
- 5/8" REBAR FOUND
UNLESS OTHERWISE NOTED
- ▲ R.R. SPIKE FOUND
- △ R.R. SPIKE SET
- 5/8" REBAR WITH I.D. CAP SET
I.D. CAP MARKED "BAKER 6938"

REFERENCES:

- DEED VOL. 248 PAGE 559
- DEED VOL. 277 PAGE 440
- DEED VOL. 226 PAGE 511
- PLAT VOL. 7 PAGE 779
- PLAT VOL. 12 PAGE 650
- PLAT VOL. 10 PAGE 158
- PLAT VOL. 10 PAGE 441
- PLAT VOL. 17 PAGE 124
- PLAT VOL. 17 PAGE 186
- PLAT VOL. 13 PAGE 4
- PLAT VOL. 5 PAGE 44

BEARINGS FROM PLAT VOL 10 PAGE 929

NOTE:
 PLAT VOL 7 PAGE 779
 DOES NOT FIT THE ROAD,
 LOT LINE OR LINES OF
 OCCUPATION. I BELIEVE THE
 INTENT OF SAID PLAT WAS
 ALONG THE LINE OF
 OCCUPATION AND WHERE
 IRON PIPES WERE FOUND.
 HOWEVER, THE LANDOWNERS
 WANT TO LEAVE THE LINE
 WHERE THE DEED DESCRIBES
 THEM.



I CERTIFY THIS SURVEY TO BE CORRECT
 TO THE BEST OF MY KNOWLEDGE.

Donald C. Baker
 DONALD C. BAKER P.S. 6938

FEB. 28, 2003
 REVISED: JULY 22, 2003
 C:\JOBS1\S-108-03 FDB/FCC



DONALD C. BAKER SURVEYING
 138 N. CLAY ST.
 MILLERSBURG, OHIO 44654
 PH. 330-674-4788
 FAX 330-674-6027