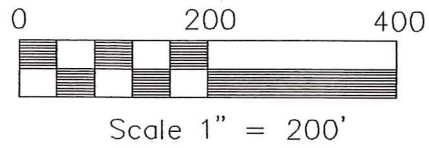


PRELIMINARY

HARDY TOWNSHIP
 S.W. QTR. SECTION 5
 T-9 N; R-6 W
 1ST. QTR., LOT 14
 T-9 N; R-7 W
 HOLMES COUNTY, OHIO
 SURVEYED FOR: ADA SCHLABACH

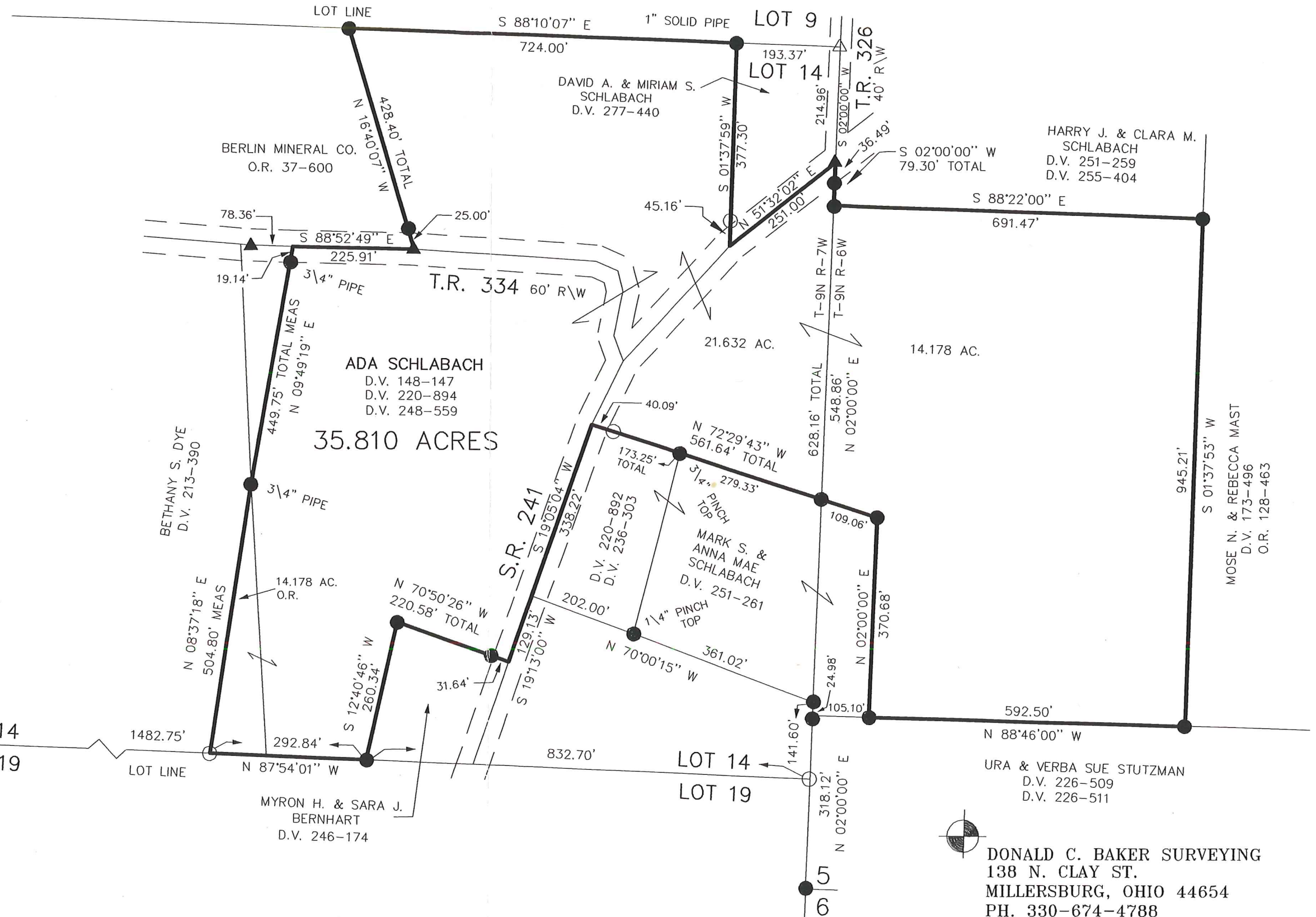


- 5/8" REBAR FOUND UNLESS OTHERWISE NOTED
- ▲ R.R. SPIKE FOUND
- △ R.R. SPIKE SET
- 5/8" REBAR WITH I.D. CAP SET, I.D. CAP MARKED "BAKER 6938"

REFERENCES:

- DEED VOL. 248 PAGE 559
- DEED VOL. 277 PAGE 440
- DEED VOL. 226 PAGE 511
- PLAT VOL. 7 PAGE 779
- PLAT VOL. 12 PAGE 650
- PLAT VOL. 10 PAGE 158
- PLAT VOL. 10 PAGE 441
- PLAT VOL. 17 PAGE 124
- PLAT VOL. 17 PAGE 186
- PLAT VOL. 13 PAGE 4
- PLAT VOL. 5 PAGE 44

BEARINGS FROM PLAT VOL 10 PAGE 929.



I CERTIFY THIS SURVEY TO BE CORRECT TO THE BEST OF MY KNOWLEDGE.

 DONALD C. BAKER P.S. 6938

FEB. 28, 2003

C:\JOBS1\S-108-03 FDB/FCC



DONALD C. BAKER SURVEYING
 138 N. CLAY ST.
 MILLERSBURG, OHIO 44654
 PH. 330-674-4788
 FAX 330-674-6027