

SURVEY PLAT of a 17.272 ACRE PARCEL

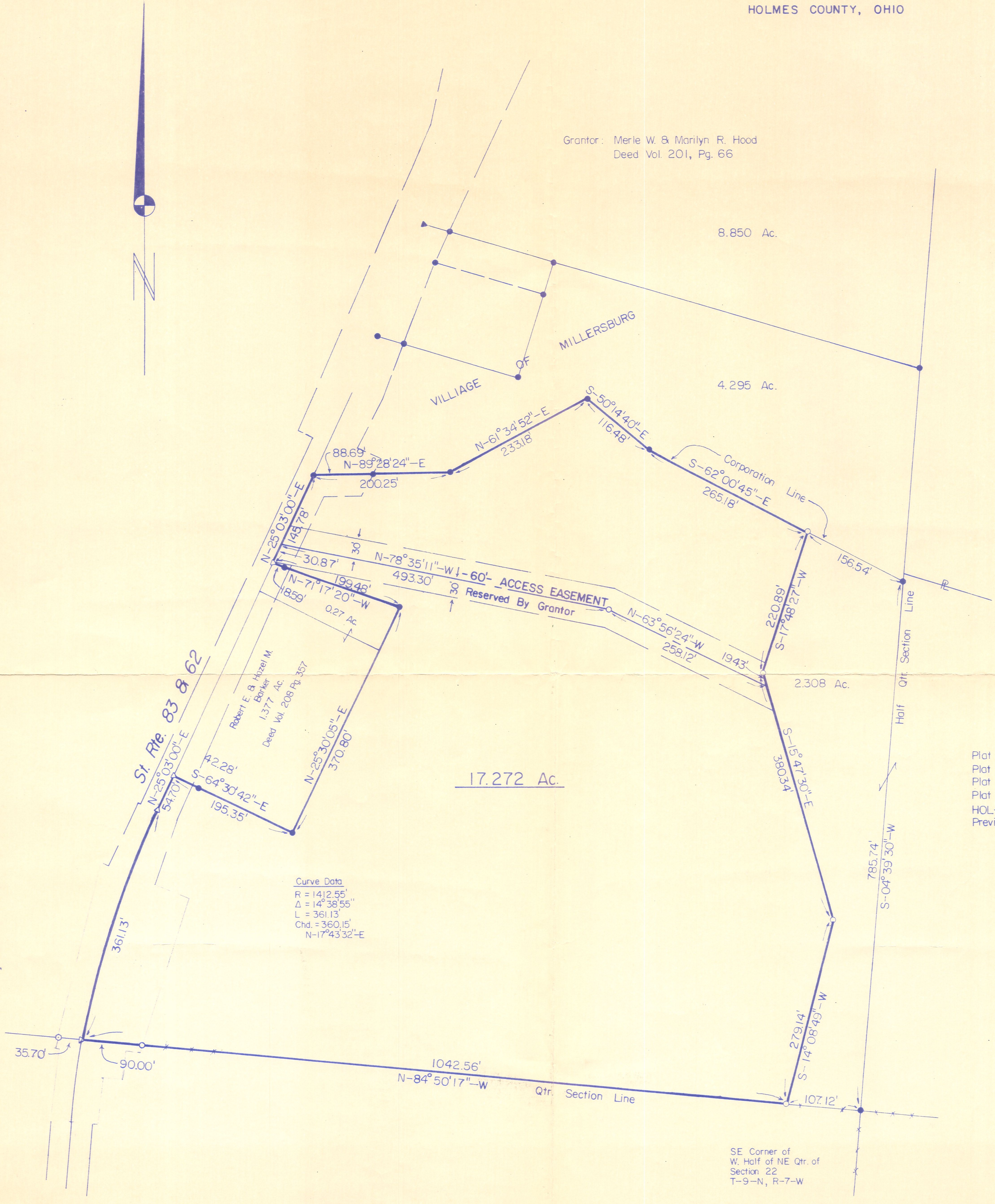
NE QUARTER of SECTION 22

T-9-N, R-7-W

Hardy Township

HOLMES COUNTY, OHIO

Grantor: Merle W. & Marilyn R. Hood
Deed Vol. 201, Pg. 66



8.850 Ac.

4.295 Ac.

17.272 Ac.

2.308 Ac.

References

- Plat Vol. 3, Pg. 93
- Plat Vol. 4, Pg. 38
- Plat Vol. 10, Pg. 376
- Plat Vol. 11, Pg. 41
- HOL-62-(1904-1907)
- Previous R.G.R. Surveys

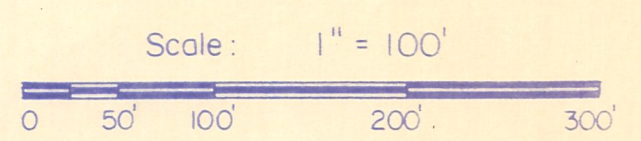
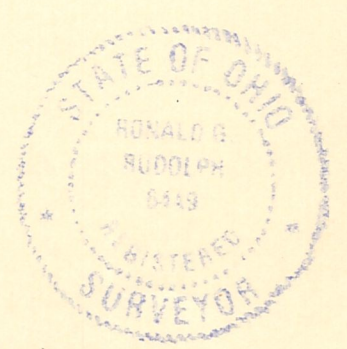
Curve Data
R = 1412.55'
Δ = 14°38'55"
L = 361.13'
Chd. = 360.15'
N-17°43'32"-E

SE Corner of
W. Half of NE Qtr. of
Section 22
T-9-N, R-7-W

- Hwy. Right-of-Way Marker Fd.
- Iron Pipe or Pin Fd.
- ▲ RR Spike Fd.
- △ 5/8" x 5" Rebar Set In Roadway
- 5/8" x 30" Rebar With Yellow Plastic Cap Marked RUDOLPH Set 6449

I Certify This Survey And Plat To Be
Correct To The Best Of My Knowledge.

11-26-86 *Ronald G. Rudolph P.L.*
Date Ronald G. Rudolph P.S. No. 6449
R.G. RUDOLPH SURVEYING, Inc.
405 W. Liberty St.
Wooster, Ohio 44691



Job No. 2482