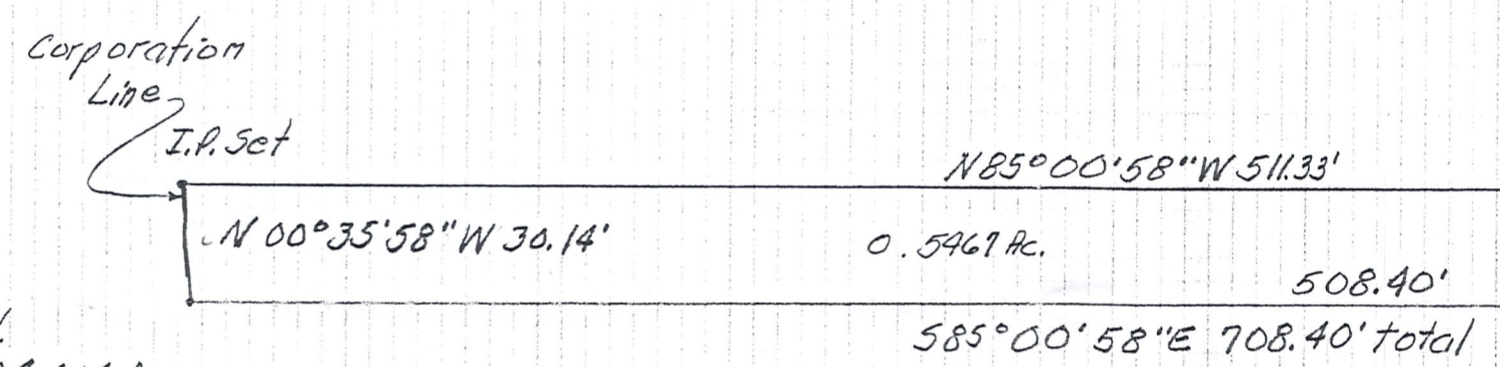


Incorporated Village of Millersburg
 D.V. 174 Pg. 722
 P.B. 2A Pg. 160 (Annexation Plat)

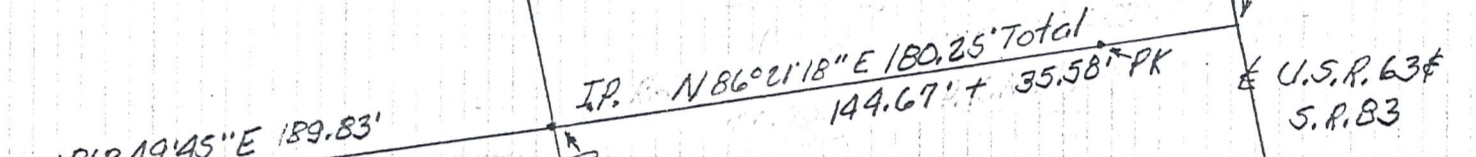
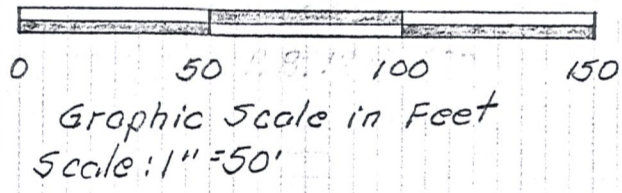
John C. & Andrew P. Tape
 D.V. 250 Pg. 110
 P.B. 10 Pg. 729
 .5701 Ac.



I.P. Fd.
 N.W. cor. 24.014 AC.
 Tract

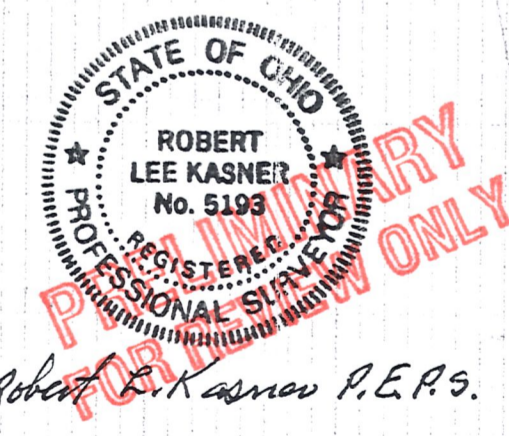
The Board of Commissioners of
 Holmes County Park District O.R. 194 Pg. 3460

Bearing Basis: P.B. 10 Pg. 729
 All iron pins Set are 5/8" x 30" rebar
 R.L.K. 5193
 Data used: P.B. 10 Pg. 729
 P.B. 10 Pg. 854
 P.B. 10 Pg. 850
 P.B. 16 Pg. 719
 Tax Map



Bldg. encroachment, I believe
 this occurred within
 recent addition.

Holmes-Tuscarawas Mennonite
 Save and Serve Shops Inc.
 O.R. 189 Pg. 503



Plat of a Survey in
 S.E. 1/4 Sec. 19, T9N, R7W
 Hardy Twp. Holmes Co. Ohio
 Village of Millersburg

Robert L. Kasner P.E. P.S.
 7007 S.R. 39
 Millersburg, Ohio 44654
 330-674-9146
 10-30-07