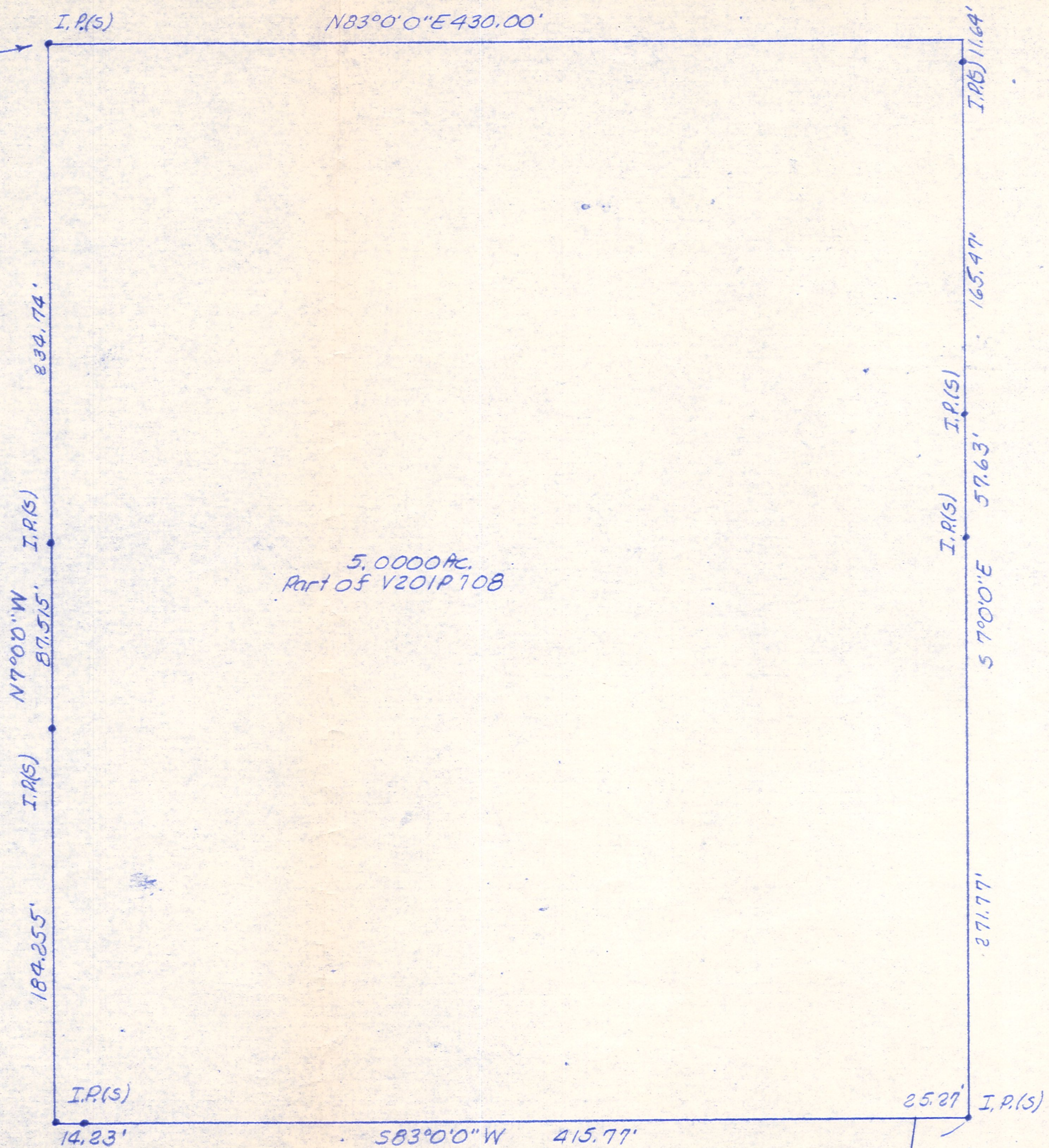
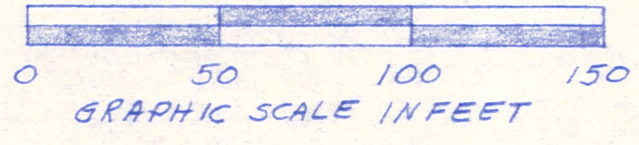


585°4'E 735.55', 57°0'0"E 105.00'
 & N83°0'0"E 57.00' from a
 stone at N.W. corner SE 1/4 S19
 T9N, R7W, of Hardy Twp., Hol.
 Co., Ohio.



NORTH

Note: When final access line is
 decided it may change somewhat.
 In this event a new plat shall
 be filed.



$\Delta = 61^{\circ}21'20''$ RT
 $R = 100.00'$
 $D = 57^{\circ}17'45''$
 $L = 107.09'$
 $T = 59.32'$
 $L.C. = 102.04'$
 $S60^{\circ}56'40''$ W



PLAT OF A SURVEY FOR
 PAUL A. MILLER
 &
 CAROL ANN MILLER
 (Grantor)
 Known as part of S.E. 1/4
 S19, T9N, R7W of Hardy
 Twp., Hol. Co., Ohio.
 Robert L. Kasner P.S. 5193
 P.E. 28820.

R.K. Nail (s) on E. of U.S.P. 62
 S.R. 83
 N88°22'40'' W 86.00'
 & 50' Easement

MAP OFFICE COPY

3/15/83