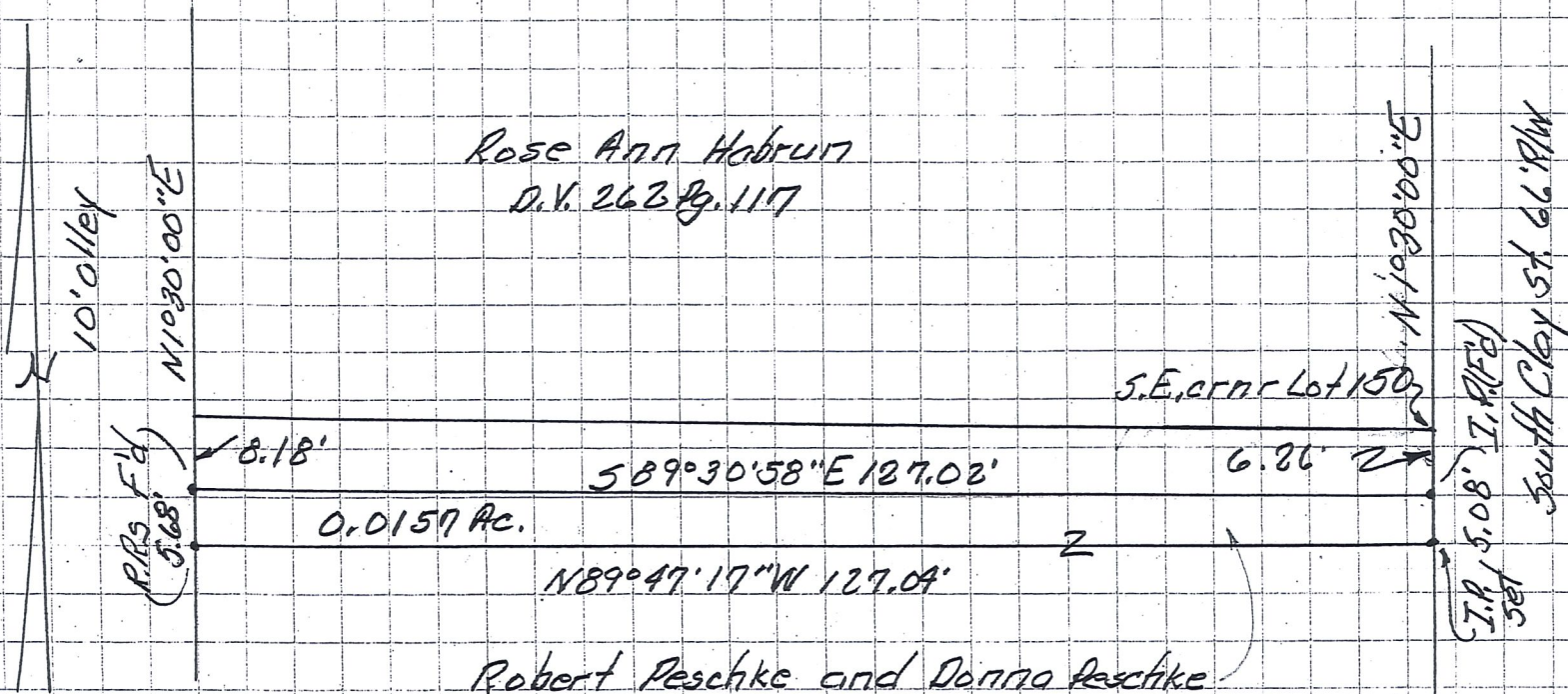


Village of Millersburg
N.E. 1/4 Sec. 19, T.9N, R.7W Hardy Twp.
Holmes Co., Ohio

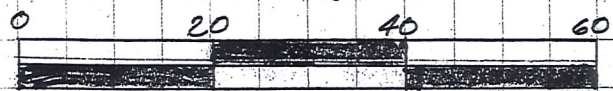


Robert Peschke and Donna Peschke
Tract 1 of O.R. 186 Pgs. 2431-2433

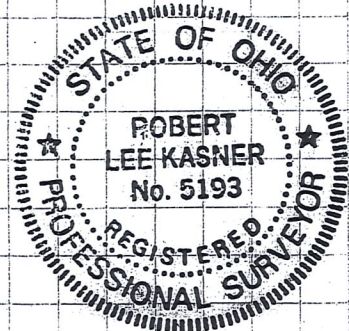
Bearing basis: P.B. 19 Pg. 631 All set I.P.s are 5/8" X 30" rebar
Data used: P.B. 19 Pg. 631 Cap PLK 5193

O.R. 186 Pgs. 2431-2433
Tax Map
P.B. 14 Pg. 346

Robert L. Kasner P.E.P.S.
7007 S.R. 39
Millersburg, Ohio 44654
330 674 9146
4/19/07



Graphic Scale in Feet
Scale: 1" = 20'



Robert L. Kasner P.E.P.S.