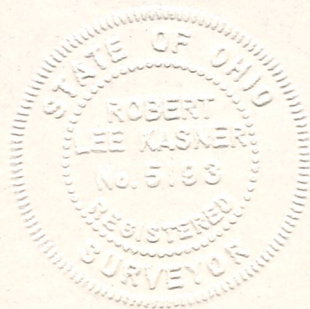
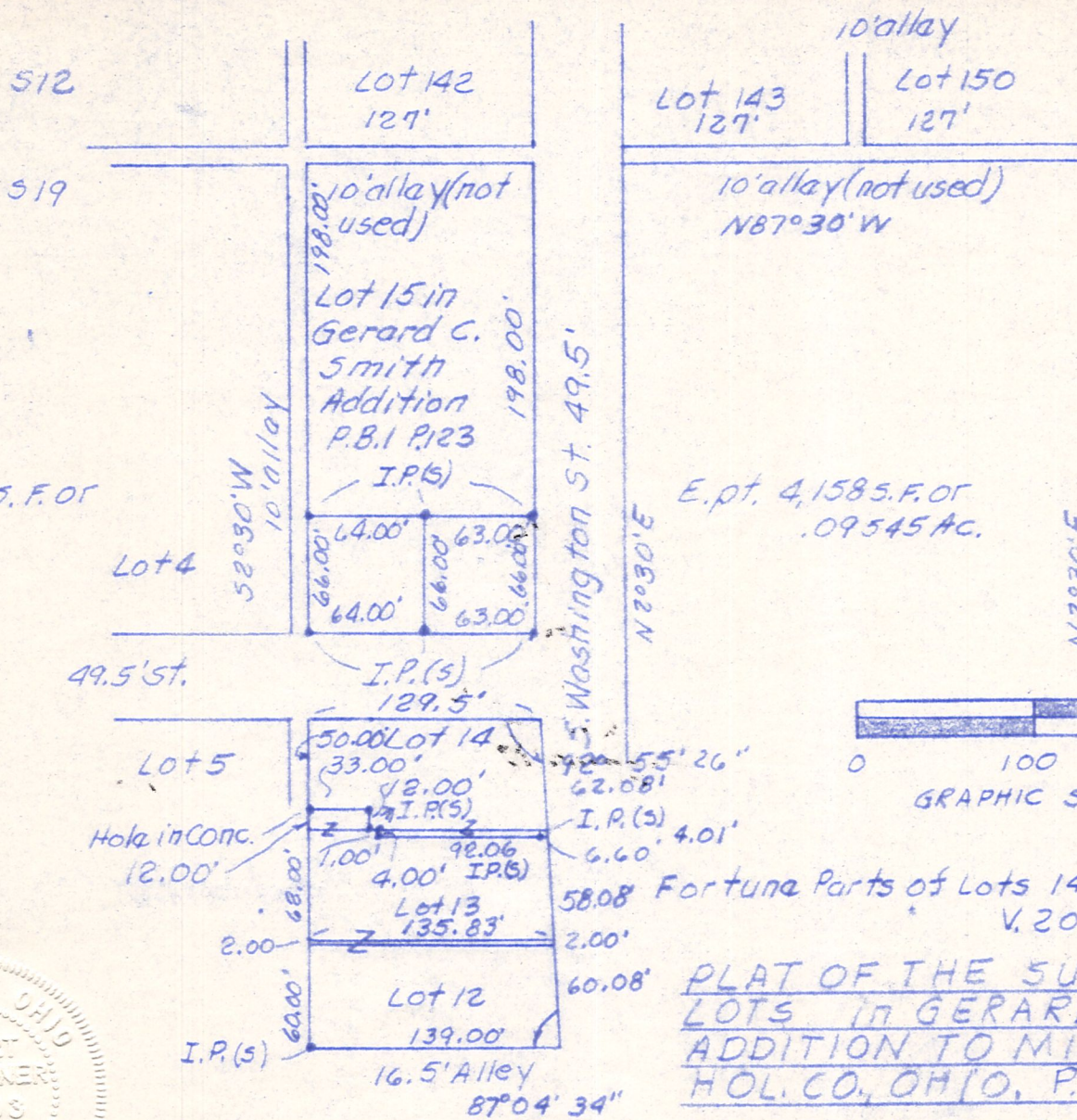


W.P. 4, 224 S.F. OF
.09697 AC.

Note: All angles
90° 0' 0" unless
otherwise
noted.



MAP OFFICE COPY



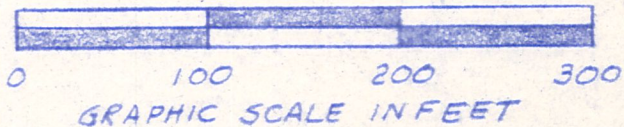
Stone at SW. cor'r
Lot 151 in original
Mbg., Hol. Co. VII
P. 186 on S. line
S 12 & N. line
S 19, T 9 N, R 7 W

Hole in Conc.
drive

125.33'

72.67'

I.P. (F)



Fortuna Parts of Lots 14 & 13 & all of Lot 12
V. 203 P 823

PLAT OF THE SUBDIVISION OF
LOTS in GERARD C. SMITH'S
ADDITION TO MILLERSBURG,
HOL. CO., OHIO, P.B. 1 P. 123

Situated in S 19, T 9 N, R 7 W of
Hardy Twp., Hol. Co., Ohio.
Robert L. Kasner, P.S. 5193, P.E. 28820

7/10/79 & 10/13/79